

SEP 08 1998

LAND CORNER RECORDATION CERTIFICATE
Filing Requirement of Act 74, Mich. P.A. 1970

Register's Office } ss.
Gogebic County }

For corners in

Gogebic
(County)

Located In:

Corner Code #

1. Public Land Survey

Section 32 T45N R 43W

DE-11W

2. Property Controlling in Section

S _____ T _____ R _____
S _____ T _____ R _____

3. Miscellaneous Property in Se

S _____ **T** _____ **R** _____
S _____ **T** _____ **R** _____

4. Lot No. _____, Recorded Plat _____
5. Private Claims _____

West M.C. on East Shore between sections
29 & 32. T45N. R43W

I, John R. Garske, in a field survey on April 2, 1998 do hereby state that under requirements of P.A. 74, Michigan P.A. of 1970, the corner points mentioned in lines 1 and 2 above were in conformance with regulations and rules therefore as required in the current manual of survey instructions of the United States Department of the Interior, Bureau of Land Management or by a decree of a Court of Law and /or that the corner points mentioned in lines 3, 4 and 5 above were in conformance with the rules of the Michigan Board of Land Surveyors or by a Decree of a Court of Law, established, re-established, monumented, recovered, found as expressed below:

NOTE: Not more than 2 corners, all in the same town and range, may be recorded on this certificate.

A. Description of original monument and accessories and/or subsequent restoration:

38.25 cms.

Original survey by Algernon Merryweather, D.S. in 1852.
A cedar 5" is the Meander Corner.
No bearing trees.

B. Description of corner evidence found and/or method applied in restoring or reestablishing corner:

I found no evidence of the original corner, however, I did find a 1" iron pipe with a plastic cap as set by Robert Winat RLS in a 1975 Survey recorded in Liber 1, page 33 of survey maps. I accepted the corner after checking it with other information and tying in to the N.W. corner of Section 32.

(Research on file)

PEER GROUP APPROVED

Richard L. O'Brien 5/13/98
COURT REPORTER

(sketch on back)

C. Description of monument for corner and accessories established to perpetuate locating the position of the corner:

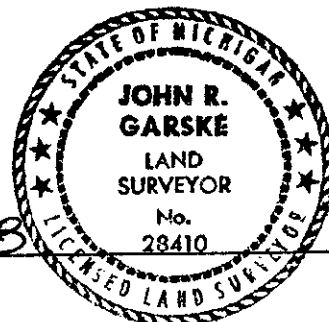
- Meander Corner west side of Peninsula:

I replaced the iron pipe with a 3 1/4" stamped aluminum cap on a 2 1/2" diam. x 30" long aluminum pipe from which I established:

| | | |
|-----------|-------|------------|
| 6" Spruce | N10°E | 43.67 feet |
| 5" Spruce | N34°E | 39.95 feet |
| 7" Spruce | S03°E | 50.03 feet |
| 3" Balsam | S35°W | 31.72 feet |

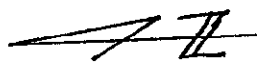
Signed by John K. Gosh
Surveyor's Michigan License No. 28410

Date 5/12/98



FORM APPROVED BY MICHIGAN STATE BOARD OF PROFESSIONAL SURVEYORS, JAN. 28, 1971
REVISED MAY 14, 1975
REVISED JAN., 1983
REVISED OCT., 1985

V-7-8 329



1" = 500'

SKETCH
SECTION LINE
COMMON TO 29 & 32
T45N, R43W
6 ORIGINAL M.C.'S

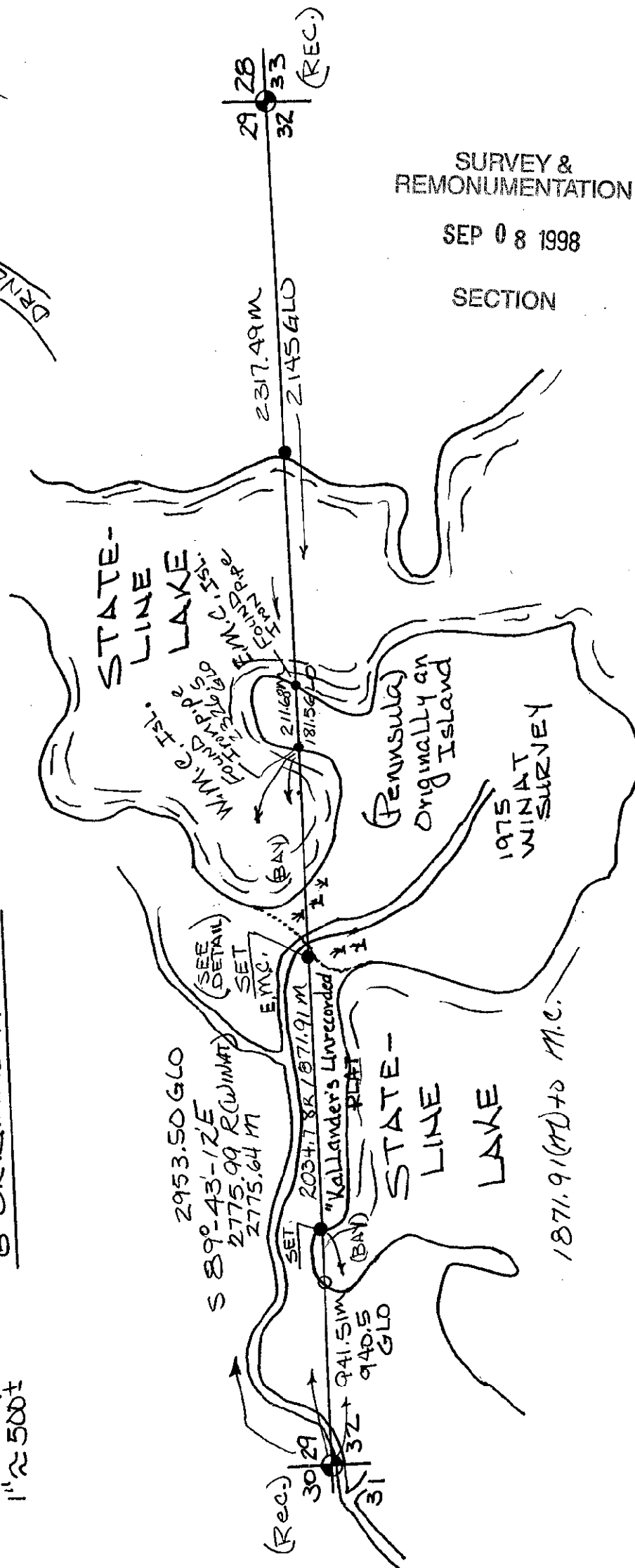
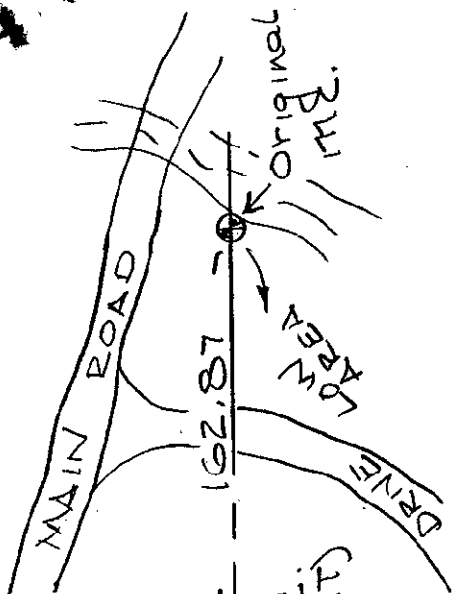
30 | 29
 31 | 32

DETAIL

1871.91M -
 2034.78R
 S.M.C.
 (SET)

162.87

Original
 M.C.



SURVEY &
 REMONUMENTATION

SEP 08 1998

SECTION

TOTAL - 8066 - GLO (5280')
 5305.16 M (WINAT)

1871.91 (M) to M.C.