

LAND CORNER RECORDATION CERTIFICATE
Filing Requirement of Act 74, Mich. P.A. 1970

For corners in
Gogebic
(County)

Located In:

Corner Code 44

1. Public Land Survey Section 5 T 47N R 47W D-1
T R
T R
T 48N R 47W D-13
2. Property Controlling S T R
in Section S T R
3. Miscellaneous S T R
Property in Sec. S T R

4. Lot No. _____, Recorded Plat _____
5. Private Claims _____
One-quarter corner common to Section 5, T47N, R47W, and
Section 32, T48N, R47W.

I, John R. Garske, in a field survey on December 7, 19 94,
do hereby certify that under requirements of P.A. 74, Michigan P.A. of 1970, the corner points mentioned
in lines 1 and 2 above were in conformance with regulations and rules therefore as required in the
current manual of survey instructions of the United States Department of the Interior, Bureau of Land
Management or by a decree of a Court of Law and/or that the corner points mentioned in lines 3, 4 and 5
above were in conformance with the rules of the Michigan Board of Land Surveyors or by a Decree of a
Court of Law; established, re-established, monumented, re-monumented, recovered, found as
expressed below:

NOTE: Not more than 4 corners, all in the same town and range, may be recorded
on this certificate.

A. Description of original monument and accessories and/or subsequent restoration:

Original survey by William Ives, Deputy Surveyor, in 1848. Original corner was an Ironwood
post and original bearing trees are: maple 14" - N26°E, 29 links (19.14'); Y. birch 12" - N45°W,
39 links (25.74').

B. Description of corner evidence found and/or method applied in restoring or reestablishing corner:

No original evidence could be found due to road construction. Re-established the corner position
by single proportionate measurement between the section corners to the east and west. The corner
falls approximately 2 feet north of the apparent gravel road centerline and 11 feet± west of a N-S
fence line on the north side of the road.

Record research form on file with County Register of Deeds office. See sketch on back.

FEED GROUP

Approved

Richard L. Wren

12/15/94

C. Description of monument for corner and accessories established to perpetuate locating the position of the corner:

Set 7" case hardened steel spike due to frozen road bed. Established the following bearing tree and
reference objects: Power Pole (No. 5-56/94) - S73°W, 92.59 feet; Power Pole - N61°W, 44.79
feet; 8" hard maple - S47°E, 85.12 feet; reference monument consisting of a 2 1/2" x 30"
aluminum monument with a 3 1/4" aluminum cap stamped to indicate corner position - North,
26.70 feet, with 6' steel rail with sign, 1.18 feet; reference monument consisting of a 2 1/2" x 30"
aluminum monument with a 3 1/4" aluminum cap stamped to indicate corner position - S24°W,
33.00 feet, with 6' steel rail with sign, 0.92 feet.

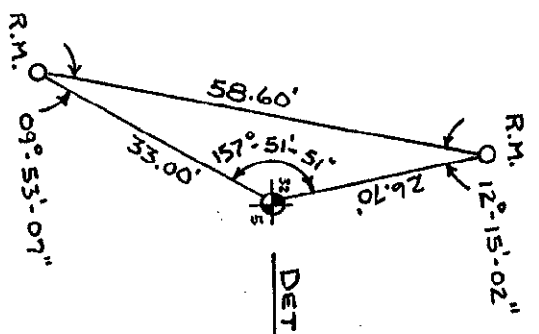
Signed by John R. Garske
Surveyor's Michigan License No. 28410

Date

12/14/94



FORM APPROVED BY MICHIGAN STATE BOARD OF LAND SURVEYORS, JAN. 28, 1971
REVISED MAY 14, 1975
REVISED JAN., 1983

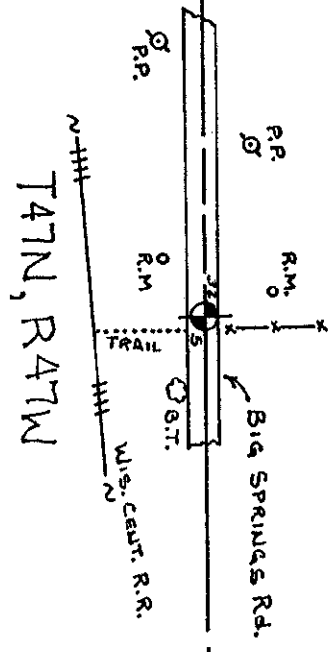


DETAIL 1/4 COR.

31 | 32
6 | 5

5280' G.L.O.
5271.74'(M)

T48N, R47W



2640' G.L.O.
2635.87'(M)

32 | 33
5 | 4

No Scale

