

STATE OF MICHIGAN
DEPARTMENT
OF
NATURAL RESOURCES
LAND CORNER RECORD

GRAND TRAVERSE COUNTY

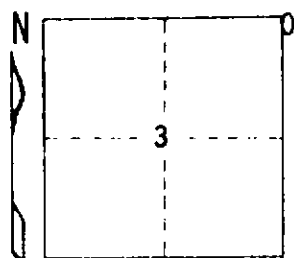
T 25 N R 9 W
T 26 N R 9 W

DESCRIPTION OF CORNER Sec. corner common to Sections 2-3-34-35

CORNER MONUMENT Set Std. Dept. Mon. buried, in "T" Road Intersection

DATE MONUMENT PLACED AND WITNESSED October 1969

WITNESSES TO CORNER..... P. Pole N 48 W 43.2'



36" Ash N 44 W 105.9'

P. Pole w/transformer N 36 E 135.0'

AND

40" Maple S 32 W 80.7'

CIRCLE CORNER REGISTERED

DESCRIPTION IN DETAIL AS TO HOW CORNER WAS LOCATED AND IDENTIFIED OR RESTORED.

This corner was set by split of ROW fences at intersection of roads N-S-E and
in line with fence to West (very old).

Corner fits average split of ROW fences for 1/2 mile N and also 1/8 Line fence
1/4 mile N to Road Intersection 1/2 mile N.

SURVEYOR'S SEAL

SIGNED

Carl F. Roer

DATE

Oct. 1969

DISTRIBUTION:

REGISTERED LAND SURVEYOR 12028

County Courthouse
Area Forester (Regions I & II)
District or Region Surveyor
Forestry Div., Lansing

R 4047
Rev. 10/68