

MICHIGAN
DEPARTMENT OF CONSERVATION
FORESTRY DIVISION

LAND CORNER RECORD

T. 25 & 26 N. R. 9 W

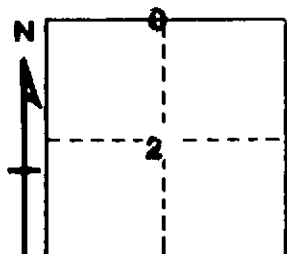
GRAND TRAVERSE COUNTY

DESCRIPTION OF CORNER ~~SECTION CORNER~~ 1/4 COR. COMMON TO SECS. 2 & 35

CORNER MONUMENT SET STD. DEPT. MON. (Buried 0.5') IN APPROX. CTR. OF DIRT ROAD, IN LINE

OLD LINE FENCE TO THE SOUTH.
DATE MONUMENT PLACED AND WITNESSED OCTOBER, 1969

WITNESSES TO CORNER.....



CIRCLE CORNER REGISTERED

8" R. Pine N 10 E 57.8'

8" R. Pine N 30 E 43.4'

AND 6" R. Pine N 45 E 53.5'

DESCRIPTION IN DETAIL AS TO HOW CORNER WAS LOCATED AND IDENTIFIED OR RESTORED.

This corner was set while retracing the North Twp. Line, T25N-R9W. The corner was established on a straight line between the NW Cor. & the NE Cor, of Sec. 2, T25N-R9W, and in line with old corner fence post and line fence to the South. Although this position does not fit the split of the mile, it does fit the one-eighth line fences ~~XXXXXXXXXXXXXXXXXXXX~~ & quarter of a mile to the East & West. Geo. Steele split up Sec. 35, T26N-R9W, in Sept., 1893. See old County Surveyors records at the Reg. of Deeds Office, L. 1, P. 420. It is believed that the quarter line and eighth line fences are a result of surveys by Steele and also by Waterman.

SURVEYOR'S SEAL

SIGNED Paul F. Roever DATE OCT., 1969
REGISTERED LAND SURVEYOR 12028