

SURVEY & REMONUMENTATION

LIBER 003 PAGE 773

APR 07 1998

LAND CORNER RECORDATION CERTIFICATE
Filing Requirement of Act 74, Mich. P.A. 1970

For corners in SECTION

Grand Traverse (County)	Located in:	Corner Code #
1. Public Land Survey	T26N R11W	M-3
	T R	
	T R	
	T R	
2. Property Controlling in Section	S T R	
	S T R	
3. Miscellaneous Property in Sec.	S T R	
	S T R	

STATE OF MICHIGAN
GRAND TRAVERSE COUNTY
RECORDED

31 DEC 7 2:57 PM
COPY

KARON ANDERSON
REGISTER OF DEEDS

Register of Deeds Stamp & File Number

4. Lot No. _____, Recorded Plat _____
5. Private Claims _____

I, Garth Stowe, in a field survey on October, 19 97 do hereby state that under requirements of P.A. 74, Michigan P.A. of 1970, the corner points mentioned in lines 1 and 2 above were in conformance with regulations and rules therefore as required in the current manual of survey instructions of the United States Department of the Interior, Bureau of Land Management or by a decree of a Court of Law and /or that the corner points mentioned in lines 3, 4 and 5 above were in conformance with the rules of the Michigan Board of Land Surveyors or by a Decree of a Court of Law, established, re-established, monumented, recovered, found as expressed below:

NOTE: Not more than 2 corners, all in the same town and range, may be recorded on this certificate.

	A	B	C	D	E	F	G	H	I	J	K	L	M
1													
2		6		5		4		3		2		1	
3													
4		7		8		9		10		11		12	
5													
6		18		17		16		15		14		13	
7													
8		19		20		21		22		23		24	
9													
10		30		29		28		27		26		25	
11													
12		31		32		33		34		35		36	
13													

A. Description of original monument and accessories and/or subsequent restoration:

M-3: U.S. Gov't survey by Burt, 1839, post witnessed by beech 12 S39W 32, sugar 18 S54E 30. No other county surveyor records available. Batzer, 1986, set 3/4" x 36" iron pipe on old fence lines south & west.

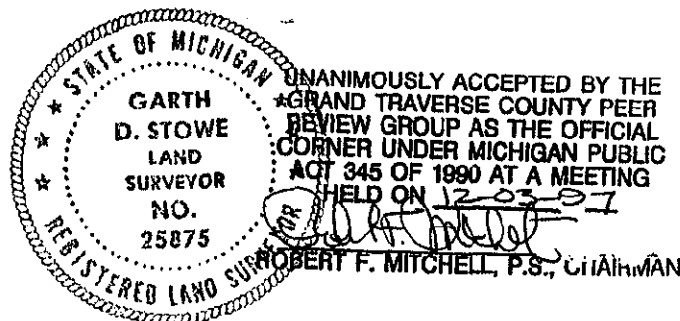
B. Description of corner evidence found and/or method applied in restoring or reestablishing corner:

M-3: Section corner common to sections 1 & 12, T26N, R11W, and sections 6 & 7, T26N R10W. Found 3/4" x 36" iron pipe with RLS cap 13026 in two track trail at fence corners as noted in Batzer survey of 1986. This corner is accepted as a careful perpetuation of a locally accepted corner as established by Batzer. Set a 2 1/2"x30" flanged bottom galvanized pipe with a 3 1/4" brass cap stamped GRAND TRAVERSE COUNTY REMONUMENTATION

C. Description of monument for corner and accessories established to perpetuate locating the position of the corner:

M-3: Section corner common to sections 1 & 12, T26N R11W, and sections 6 & 7 T26N, R10W. Set 2 1/2"x30" flanged bottom galvanized pipe with a 3 1/4" brass cap stamped GRAND TRAVERSE COUNTY REMONUMENTATION.

N 54° W	13.24'	Nail found in 16" Beech
S 25° E	32.62'	Nail found in 8" Maple
N 14° W	21.02'	Nail found in 8" Maple
S 71° W	96.04'	Nail set in 10" Red Pine



Corner approved by Grand Traverse County Peer Review Group 12-03-97

Signed by Garth D. Stowe

Date 12-19-97

Surveyor's Michigan License No. 25875