



LAND CORNER RECORDATION CERTIFICATE

Filing Requirement of Act 74, Mich. PA 1970

For Corners In: Grand Traverse (County)	Located In	Corner Code #
1. Public Land Survey	T _____ R _____	_____
2. Property Controlling in Section	S 11 T 27N R 10W	8, 11
3. Miscellaneous Property in Section	S _____ T _____ R _____	_____
	S _____ T _____ R _____	_____

2015L-00018
STATE OF MICHIGAN
GRAND TRAVERSE COUNTY
RECORDED 10:09:56 AM
11/20/2015 PAGE 1 OF 1
PEGGY HAINES REGISTER OF DEEDS

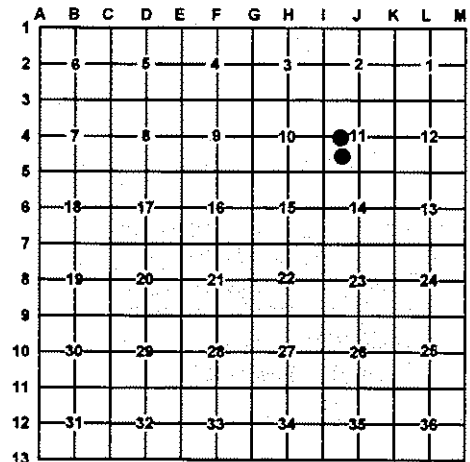
Register of Deeds Stamp & File Number

4. Lot No: _____ Recorded Plat: _____

5. Private Claims: _____

I, Joshua R. Davidson, in a field survey on September 16, 2015 do hereby state that under requirements of PA 74, Michigan PA of 1970, the corner points mentioned in lines 1 and 2 above were in conformance with regulations and rules therefore as required in the current manual of survey instructions of the United States Department of the Interior, Bureau of Land Management or by a decree of a Court of Law and/or that the corner points mentioned in lines 3, 4 and 5 above were in conformance with the rules of the Michigan Board of Land Surveyors or by a Decree of a Court of Law, established, re-established, monumented, recovered, found as expressed below:

NOTE: Not more than 2 corners, all in the same town and range, may be recorded on this certificate.



A. Description of original monument and accessories and/or subsequent restoration:

8 – CW 1/16 corner section 11

11 – SW 1/16 corner section 11

1998 – Springbrook West condominium Survey Plan, L. 1230, P. 88 – Gary Wilson, PS #25881 – no corner description.

1891 – CSR – L. 1, P. 267 – C.P. Tuller – hem post.

2012 – Certificate of Survey, L. 2013S, P. 2 – John F. Korr JR. PS #24600 – Iron previously set, PS#12581.



B. Description of corner evidence found and/or method applied in restoring or re-establishing corner:

8 – CW 1/16 corner section 11

11 – SW 1/16 corner section 11

Found and accepted a 1/2" rebar & broken cap. Replaced it with a stamped 2" aluminum cap on a 5/8" X 34" rebar.

Did not find post set by Tuller. Set a stamped 2" aluminum cap on 5/8" X 34" rebar per BLM standard procedures.

C. Description of monument for corner and accessories established to perpetuate locating the position of the corner:

8 – A stamped 2" aluminum cap on 5/8" rebar

11 – A stamped 2" aluminum cap on 5/8" rebar.

S65°E 24.00' to set nail & tag in SW. side 22" R. Maple
S24°W 55.83' to set nail & tag in E. side 6" Hemlock
S80°W 15.79' to set nail & tag in S. side 20" Hemlock
N10°W 9.48' to set nail & tag in E. side 7", 13" tw. R. Maple
Set blue post with location tag 1' Southeast

N21°E 17.22' to set nail & tag in W. side 7" Oak
S62°E 39.06' to set nail & tag in SW. side 6" S. Maple
S36°W 17.82' to set nail & tag in SE. side 5" S. Maple
N64°W 26.79' to set nail & tag in NE. side 6" S. Maple
Set blue post with location tag 1' North

Signed by:

Joshua R. Davidson

Date:

11/19/2015

Surveyor's Michigan License No.:

46659