



LIBER 3 PAGE 115
REMONUMENTATION
LAND CORNER RECORDATION CERTIFICATE
Filing Requirement of Act 74, Mich. P.A. 1970

107808

RECORDED
HILLSDALE CO. MICH.

'95 DEC 21 PM 3 41

Judy Womzand
REG. OF DEEDS

SURVEY 2
11-11-1995

JAN 30 1996

Register of Deeds Stamp & File Number

COMMISSION

For corners in

HILLSDALE

(County)

Located In:

Corner Code #

1. Public Land Survey T 7S R 2W
T R
T R
T R
2. Property Controlling S T R
in Section S T R
3. Miscellaneous S T R
Property in Sec. S T R

H-5, K-3

4. Lot No. , Recorded Plat
5. Private Claims

I, JOHN MAXSON, in a field survey on 28 NOVEMBER, 19 95, do hereby certify that under requirements of P.A. 74, Michigan P.A. of 1970, the corner points mentioned in lines 1 and 2 above were in conformance with regulations and rules therefore as required in the current manual of survey instructions of the United States Department of the Interior, Bureau of Land Management or by a decree of a Court of Law and/or that the corner points mentioned in lines 3, 4 and 5 above were in conformance with the rules of the Michigan Board of Land Surveyors or by a Decree of a Court of Law; established, re-established, monumented, re-monumented, recovered, found as expressed below:

NOTE: Not more than 4 corners, all in the same town and range, may be recorded on this certificate.

A. Description of original monument and accessories and/or subsequent restoration:

H-5

1825 GLO WILLIAM BROOKFIELD
POST
N58W 64 lks 13" W.OAK
N09W 74 lks 14" W.OAK

1876 GEORGE MARK
20" STONE, IRON
N19W 28 lks 10" HICKORY
N01W 44.75 lks 6" HICKORY

K-3

1825 GLO WILLIAM BROOKFIELD
POST
N77E 10 lks 30" W.OAK
N17E 19 lks 15" W.WOOD

1878 GEORGE MARK
30" STONE, STAKE
S49W 70.5 lks 6" W.OAK

B. Description of corner evidence found and/or method applied in restoring or reestablishing corner:

H-5

DID NOT FIND CORNER AS SET BY GEORGE MARK. REESTABLISHED THE CORNER BY FIRST ESTABLISH G-5 THAN GOING ALONG EXISTING FENCE AT A PROPORTIONAL DISTANCE FROM G-5 TO I-5 (I-5 WAS A STONE). THE CORNER ENDED UP BEING 7.24 FEET EAST OF CENTERLINE OF OLD TOTE ROAD, WHICH IS NOW CLOSED. THE OLD ROAD DOES NOT SEEM TO BE CENTERED OVER CORNER BEING THAT IT IS NOT A STRAIGHT ROAD AND IS ALSO A TWO TRACK ROAD. ACCEPTED AS A CAREFUL AND FAITHFUL REESTABLISHMENT OF THE POSITION OF THE CORNER.

K-3

DID NOT FIND CORNER AS SET BY GEORGE MARK. THERE WAS GOOD OCCUPATION BEING CENTERLINE OF BEECHER AND GILBERT ROADS. TOOK MEASUREMENTS ALONG EAST SECTION LINE AND NORTH SECTION LINE OF SECTION 11. FROM SURVEY DONE BY GEORGE MARK COMPARED TO MEASUREMENTS TAKEN, THEY WERE ALL PROPORTIONATE TO EACH OTHER. ACCEPTED OCCUPATION AS THE BEST AVAILABLE EVIDENCE OF THE POSITION OF THE ORIGINAL CORNER.

C. Description of monument for corner and accessories established to perpetuate locating the position of the corner:

H-5

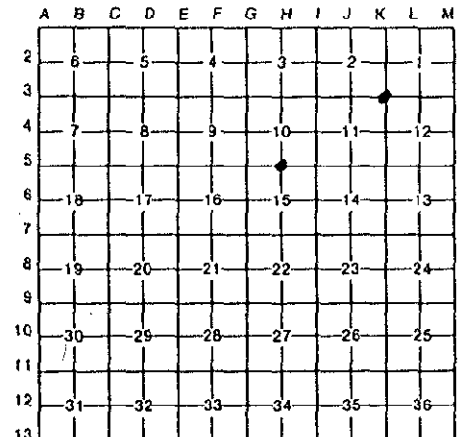
SET 5/8" x 36" REBAR W/CAP

N10W 8.33' 12" OAK
N60E 15.72' 10" CHERRY
EAST 29.35' 10" PINE
SOUTH 27.51' 16" CHERRY

K-3

SET 5/8" x 36" REBAR W/CAP

S45W 50.69' P.POLE
N15E 55.60' 32" MAPLE
N25W 51.08' 12" WILLOW
S65E 45.00' STOP SIGN



Signed by John E Maxson

Date 21 December 1995

Surveyor's Michigan License No. 27454

