

LAND CORNER RECORDATION CERTIFICATE
Filing Requirement of Act 74, Mich. P.A. 1970

For corners in
Iron

(County)

Located In:

Corner Code #

- | | | |
|---------------------------------------|------------------|-----|
| 1. Public Land Survey | T 42N R 31W | F12 |
| | T R | |
| | T R | |
| | T R | |
| 2. Property Controlling
in Section | S 33 T 42N R 31W | 1 |
| | S 33 T 42N R 31W | 5 |
| 3. Miscellaneous
Property in Sec. | S T R | |
| | S T R | |

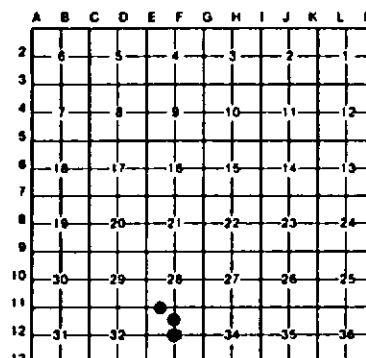
Register of Deeds Stamp & File Number

4. Lot No. _____, Recorded Plat _____
5. Private Claims _____

5 September 22, 1994
1 September 22, 1994

I, Stephen J. Szyszkoski, in a field survey on F12 September 21, 1994, 19_____, do hereby certify that under requirements of P.A. 74, Michigan P.A. of 1970, the corner points mentioned in lines 1 and 2 above were in conformance with regulations and rules therefore as required in the current manual of survey instructions of the United States Department of the Interior, Bureau of Land Management or by a decree of a Court of Law and/or that the corner points mentioned in lines 3, 4 and 5 above were in conformance with the rules of the Michigan Board of Land Surveyors or by a Decree of a Court of Law, established, re-established, monumented, re-monumented, recovered, found as expressed below:

NOTE: Not more than 4 corners, all in the same town and range, may be recorded on this certificate.



A. Description of original monument and accessories and/or subsequent restoration:

(F12) Center of Section 33. Corner not established in the original survey. Established in the 1940's by WMPCO as follows: set "Pipe Marker, 4" Balsam S78E 5.6', 3" Maple S04W 9.4', 4" twin Maple S70W 13.4'. Found no subsequent record.
(1-Sec. 33) West 1/16 corner between Sections 28-33. Corner not established in the original survey. Established in the 1940's by Wisconsin Michigan Power Company as follows: "1/8 corner. Set pipe marker. Open Marsh". Found no subsequent record.
(5-Sec. 33) North 1/16 corner, Sec. 33. Corner not established in the original survey. Found no subsequent record. The section has been partially subdivided by Wisconsin Michigan Power Company in the 1940's, and by Ewert Muller in 1958.

B. Description of corner evidence found and/or method applied in restoring or reestablishing corner:

(F12) Found the WMPCO monument, a 2" capped iron pipe, in good condition. All of the WMPCO NBTs are gone. Determined the corner to be 3.77' west and 0.45' south of the intersection of straight lines connecting opposite quarter corners - all WMPCO monuments. This corner has controlled previous subdivision of Section 33 by WMPCO and others. Accepted the pipe monument as a careful and faithful determination of the position of the corner. Marked 4 new witnesses as described below.
(1-Sec. 33) Recovered the WMPCO monument - a 2" capped iron pipe 0.53' north and 0.14' west of a position midway and on a straight line between quarter corner east and section corner west. Both adjacent corners are WMPCO monuments. Accepted the monument as a careful and faithful determination of the position of the corner. Marked 3 new witnesses as described below.
(5-Sec. 33) Found no evidence of prior monumentation at the corner position. Established the corner on a straight line between Quarter corner 1324.39' north and Center of Section 1324.39' south, both corners being WMPCO monuments. The position for the corner is occupied by a 14" W. Pine. I therefore placed a WITNESS CORNER to the 1/16th 0.50' east of the corner position, on a line defined by the 1/16 corner and the NW 1/16 corner of Section 33. The witness corner is a 1" I.D. x 32" iron pipe capped with a 4" dia. cast aluminum MDNR tablet, stamped to read: "N1/16 Witness cor. Sec. 33, Cor is 0.5 ft West." Marked 4 witnesses as described below.

C. Description of monument for corner and accessories established to perpetuate locating the position of the corner:

(F12) Found a 2" I.D. x unknown length iron pipe with a 3 1/2" brass WMPCO cap. Blazed and scribed the following new bearing trees:
5" Maple S43E 15.2' "1/4S BT"
6" Y. Birch S08W 5.0' "1/4S BT"
6" Maple S85W 28.8' "1/4S BT"
Set nail with MDNR ref. tag in:
power pole #84-210 39 55-2 N39E 53.10'
Bearings are magnetic.

(1) Found a 2" I.D. x unknown length iron pipe capped with a 3 1/2" dia. brass WMPCO cap. Blazed and scribed the following bearing trees:
5" Y. Birch N68W 95.6' "1/16S BT"
10" Maple N48W 131.3' "1/16S BT"
7" Spruce S73W 145.5' "1/16S BT"
a 1" I.D. x 6" long iron pipe is 1 ft. east of the monument. Bearings are magnetic. The corner falls in a beaver meadow.

(5-Sec. 33) Witness corner. Set a 1" iron pipe with 4" MDNR cap as a witness corner. Blazed and scribed the following bearing trees:
14" W. Pine S57W 0.4' "WC BT"
10" W. Pine S54E 9.7' "WC BT"
6" W. Pine N44E 10.2' "WC BT"
14" W. Pine N44W 27.6' "WC BT"
The 1/16 corner is 0.50' west of this monument. Witnesses are to the witness corner. Bearings are magnetic.

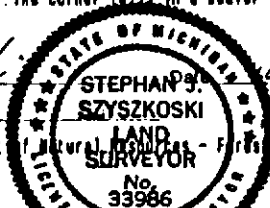
Signed by

Stephen J. Szyszkoski

Surveyor's Michigan License No.

33986

For the Michigan Department



APPROVED BY MICHIGAN STATE BOARD OF LAND SURVEYORS, JAN. 26, 1971
REVISED MAY 14, 1975
REVISED JAN. 1983