



8 0 3 3 1 9 1

Tx:4023361

1/24/2014 9:45:00 AM

LAND CORNER RECORDATION CERTIFICATE

Filing Requirement of Act 74, Mich. PA 1970

For Corners In:

Kalkaska

(County)

Located In

Corner Code #

1. Public Land Survey	T	25N	R	7W	K10
	T		R		
2. Property Controlling in Section	S		T		
	S		T		
3. Miscellaneous Property in Section	S		T		
	S		T		

4. Lot No: Recorded Plat:

5. Private Claims:

I, Joshua R. Davidson, in a field survey on July 30, 2013 do hereby state that under requirements of PA 74, Michigan PA of 1970, the corner points mentioned in lines 1 and 2 above were in conformance with regulations and rules therefore as required in the current manual of survey instructions of the United States Department of the Interior, Bureau of Land Management or by a decree of a Court of Law and/or that the corner points mentioned in lines 3, 4 and 5 above were in conformance with the rules of the Michigan Board of Land Surveyors or by a Decree of a Court of Law; established, re-established, monumented, recovered, found as expressed below:

NOTE: Not more than 2 corners, all in the same town and range, may be recorded on this certificate.

Register of Deeds Stamp & File Number

DOCUMENT #

3117899

JOANN DEGRAAF

KALKASKA CTY ROD

KALKASKA, MI

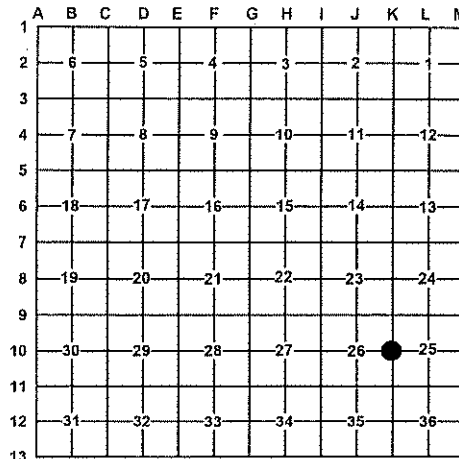
RECORDED ON

01/24/2014 09:56 AM

REC FEE: 14.00

PAGES: 1

BK: 3PG: 362



A. Description of original monument and accessories and/or subsequent restoration:

K10 – ¼ corner common to sections 25 & 26, T25N, R7W

– 1854 – GLO Resurvey by Thomas Whelpley – set 1/4 sec post – 1) Hemlock 15" S71½°E 10'; 2) Cedar 12" N71°W 4'.

– 1915 – Fargo Engineering Map #3412 – No US evidence found.

– 3) Hemlock 12" N22½°E 0.57'; 4) Cedar 8" S79½°E 0.50½'.

– 2007 – Unrecorded Survey, File No. 15807 – Dean Farrier, PS #41098 – Fd. 1" pipe W/elbow lying down, reset from 2 Fargo witness stumps, fits reasonably between N.W. corner and S.W. corner. – 5) S45°E, 16.14' – 14" Cedar, set nail; 6) S10°W, 19.14' – 10" Cedar, set nail; 7) S80°W, 25.12' – 10" Cedar, set nail; 8) N30°W, 10.34' – 12" Cedar, set nail; 9) N40°E, 20.17' – 16" Cedar, set nail.

B. Description of corner evidence found and/or method applied in restoring or re-establishing corner:

K10 – ¼ corner common to sections 25 & 26, T25N, R7W

Found Fargo pipe, upside down and Farrier witnesses. Position fits SE Cedar stump of Fargo. Dug a 2' x 6' x 2' deep hole in search of Fargo butter dish & crockery, nothing was found. Accepted Fargo pipe as a careful and faithful reestablishment of the position of the original corner and replaced it with a stamped 4" aluminum DNR cap on 1" x 48" galvanized iron pipe.

C. Description of monument for corner and accessories established to perpetuate locating the position of the corner:

K10 – stamped 4" aluminum DNR cap on 1" x 48" galvanized iron pipe.

N43°E 20.15' to found nail in NW. side 15" Cedar (#9)

S45°E 16.11' to found nail in NE side 12" Cedar (#5)

S13°W 19.08' to found nail in E side 10" Cedar (#6)

N22°W 10.35' to found nail in W side 12" Cedar (#8)

Set Blue post 1' North



Signed by:

Joshua R. Davidson

Date:

1-22-2014

Surveyor's Michigan License No.:

46659