

STATE OF MICHIGAN
DEPARTMENT
OF
NATURAL RESOURCES

LAND CORNER RECORD

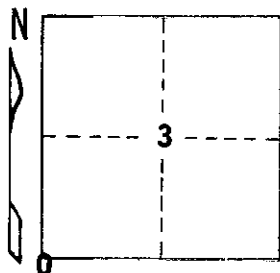
KALKASKA COUNTY
T 28 N R 5 W

DESCRIPTION OF CORNER Section corner common to sections 3-4-9-10

CORNER MONUMENT Set Dept. Monument

DATE MONUMENT PLACED AND WITNESSED 10-30-69

WITNESSES TO CORNER.....



2" R. Pine S 40 W 38.8'

6" R. Pine S 35 E 101.2'

AND

CIRCLE CORNER REGISTERED

DESCRIPTION IN DETAIL AS TO HOW CORNER WAS LOCATED AND IDENTIFIED OR RESTORED.

This corner was restored during a retracement in this township. Reestablished B. L. Caukins corner as identified in 1919 survey, from his record measurements, in accord with corners in all directions. Caukins BTs destroyed.

SURVEYOR'S SEAL

DISTRIBUTION:

SIGNED *Leunth Ostling* DATE 11-4-69
REGISTERED LAND SURVEYOR 10068

County Courthouse
Area Forester (Regions I & II)
District or Region Surveyor
Forestry Div., Lansing

R 4047
Rev. 10/68