

SURVEY & REMONUMENTATION

MAR 08 1999

LAND CORNER RECORDATION CERTIFICATE
Filing Requirement of Act 74, Mich. P.A. 1970
KENT COUNTY REMONUMENTATION

For corners in **SECTION**

| | | |
|---------------------------------------|--------------------------------|-------------------------|
| <u>Kent</u> (County) | Located in: Vergennes Township | Corner Code # |
| 1. Public Land Survey | T <u>7N</u> R <u>9W</u> | <u>K-10E</u> |
| | T _____ R _____ | |
| | T _____ R _____ | <u>Witness Monument</u> |
| | T _____ R _____ | |
| 2. Property Controlling in Section | S _____ T _____ R _____ | |
| | S _____ T _____ R _____ | |
| 3. Miscellaneous Property in Sec. | S _____ T _____ R _____ | |
| | S _____ T _____ R _____ | |
| 4. Lot No. _____, Recorded Plat _____ | | |
| 5. Private Claims _____ | | |

REG. OF DEEDS

38 DEC 14 AM 8:00

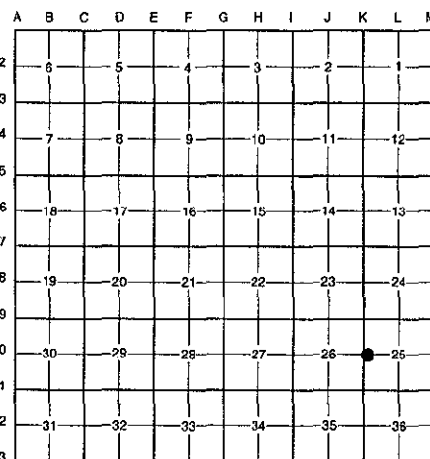
STATE OF MICHIGAN
COUNTY OF KENT
RECEIVED FOR RECORD

other code #9
11035

Register of Deeds Stamp & File Number

I, Randy Kolehhouse, in a field survey on January 8 19 98, do hereby certify that under requirements of P.A. 74 Michigan P.A. of 1970, the corner points mentioned in lines 1 and 2 above were in conformance with regulations and rules therefore as required in the current manual of survey instructions of the United States Department of the interior, Bureau of Land Management or by a decree of a Court of Law and/or that the corner points mentioned in lines 3, 4 and 5 above were in conformance with the rules of the Michigan Board of Land Surveyors or by a Decree of a Court of Law; established, re-established, monumented, re-monumented, recovered, found as expressed below:

NOTE: Not more than 4 corners, all in the same town and range, may be recorded on this certificate.



A. Description of original monument and accessories and/or subsequent restoration:

| | | | | |
|------|------|----------------|---------------|--|
| K-10 | 1838 | G.L.O. Notes | N. Brookfield | Set Post |
| | 1989 | L.C.R.C. #5229 | John Bueche | Set K.C. Witness Mon. on E-W 1/4 Line of Sec. 25 |
| | 1995 | L.C.R.C. #8261 | William Byl | K.C. Witness Monument |

P.A. 345 1990 KENT COUNTY

PEER APPROVED 2/19/98

CHAIRMAN Randy Kolehhouse

This corner was originally approved by the Kent County Remonumentation Peer Group and monumented by John Bueche on 10/2/98 and was recorded per L.C.R.C. #5229.

B. Description of corner evidence found and/or method applied in restoring or reestablishing corner:

K-10 Found a Standard Kent County Witness Monument on top of bank in back yard of House 115 Flat River Road per L.C.R.C.'s #5229 and #8261 as set by John Bueche between Sections 25 and 26 1443.23 feet East of 1/4 corner on 1/4 line of Section 25.

L.C.R.C. #5229

Nail & Remon. tag N side 36" Maple S 35° W 91.12'
W. cor. of house S 60° E 116.85'
SW cor. top of wooden steps N 50° E 58.02'
Face of 4" Pine N 15° W 14.28'
Mon. is on top of bank

L.C.R.C. #8261

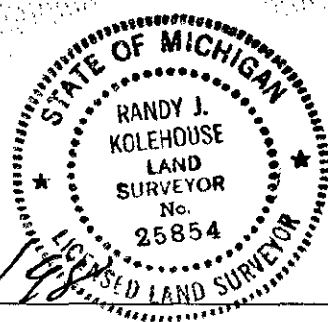
Nail & KC Remon. tag N. side 36" Maple S35°W 91.14'
W. cor. of house #115 S60°E 116.85'
SE cor. top of wooden steps N50°E 58.02' (m. 58.05')
Nail & KC Remon. tag W. side 10" Pine N15°W 14.66' (m. 14.69')
Face of 3" steel post for satellite dish N40°E 7.34' (m. 7.40')
Mon. is on top of bank

The selected location is accepted by me and is generally accepted by professional surveyors as the best available evidence of the position of the original corner.

C. Description of monument for corner and accessories established to perpetuate locating the position of the corner:

K-10 Standard Kent County Witness Monument

Nail & K.C. remon. tag on N side 36" Maple S 35° W 91.14'
W cor. of hse. 115 S 60° E 116.85'
SE cor. top wooden steps N 50° E 58.05'
Nail & K.C. remon. tag on W side 10" Pine N 15° W 14.69'
Fence of steel post for satellite dish N 40° E 7.40'
Mon. is on top of bank



Signed by Randy J. Kolehhouse

Date 12/4/98

Surveyor's Michigan License No. 25854