

KENT COUNTY REMONUMENTATION

FEB 14 1997

LAND CORNER RECORDATION CERTIFICATE
Filing Requirement of Act 74, Mich. P.A. 1970

COMMISSION

For corners in
KENT COUNTY

Located In:

Corner Code #

1. Public Land Survey

2. Property Controlling in Section

3. Miscellaneous
Property in Sec.

	T	R
	T	R
	T	R
	T	R
S 25	T 7N	R 12W
S	T	R
S	T	R
S	T	R

#5

Wit. Cor. on
E-W 1/4 line
Sec. 25

4. Lot No. _____, Recorded Plat

5. Private Claims

Kirk Breitels

I, Kirk Breittels, in a field survey on July 17, 1996 do hereby state that under requirements of P.A. 74, Michigan P.A. of 1970, the corner points mentioned in lines 1 and 2 above were in conformance with regulations and rules therefore as required in the current manual of survey instructions of the United States Department of the Interior, Bureau of Land Management or by a decree of a Court of Law and/or that the corner points mentioned in lines 3, 4 and 5 above were in conformance with the rules of the Michigan Board of Land Surveyors or by a Decree of a Court of Law; established, re-established, monumented, recovered, found as expressed below:

NOTE: Not more than 2 corners, all in the same town and range, may be recorded on this certificate.

A. Description of original monument and accessories and/or subsequent restoration:

1830 - Nothing set by GLO

1833 - Plat of the Village of Grand Rapids (Campau's Addition) - being situated in the S 1/2 of the NE 1/4 of Sec. 25, T7N, R12W (North of Fulton St.)
1956 - City of Grand Rapids witness

1956 - City of Grand Rapids witness card # 2-K-1. City Iron at E 1/4 corner of Sec. 25 is on C/L Fulton St. East & West.

1979 - Mich. Dept. State Hwy. alignment of Fulton St. - C/L Fulton St. = E-W 1/4 line

B. Description of corner evidence found and/or method applied in restoring or reestablishing corner:

Produced C/L Fulton St. (E. of the Grand River) from lot corners and occupation in Campau's Plat and subsequent replats (N. side Fulton St.) and from lot corners and occupation from Kent Plat (S. side Fulton St.). C/L Fulton St. as produced extends East to the East 1/4 corner of Sec. 25. In the 1950's the Mich. Dept. of State Highways designated Fulton St. as highway M-50 (abandoned). The R/W maps for M-50 in Sec. 25 show the R/W to be "existing" per plats. They do not show or indicate any monumentation of the E-W 1/4 line in Sec. 25. Subsequent alignment work by the MDSH in 1979 used the C/L Fulton St. as produced and called it "E-W 1/4 line" of Sec. 25 (Measurements and angle to side streets agree). The location is accepted by me and is generally accepted by professional surveyors as the best evidence of the position of the corner (1/4 line).

C. Description of monument for corner and accessories established to perpetuate locating the position of the corner:

Set Standard Kent Co. Witness Mon. on East & West 1/4 line (East of the Grand River) of Sec. 25, being the Westerly extension of the C/L Fulton St per plats. NE corner wall foundation at back of plat.

NE corner wall foundation at back of walk S25°W 51.43'

Top C/L fire hydrant

Top C/L fire hydrant

SW corner of West brick pillar

SE corner casting of 1' x 1' handhole

C/L Manhole

C/L bridge at E. end of bridge

S35°E 48.21' See sketch reverse side
N75°E 107.28'
N70°E 112.67'
N15°W 33.78'
S05°E 21.11'
S70°W 15.6'

STATE OF MICHIGAN
KIRK
BREITELS

Signed by Kirk J. Smith
Surveyor's Michigan License No. 30077

Date 7/25/96

P.A. 345 1990 KENT COUNTY

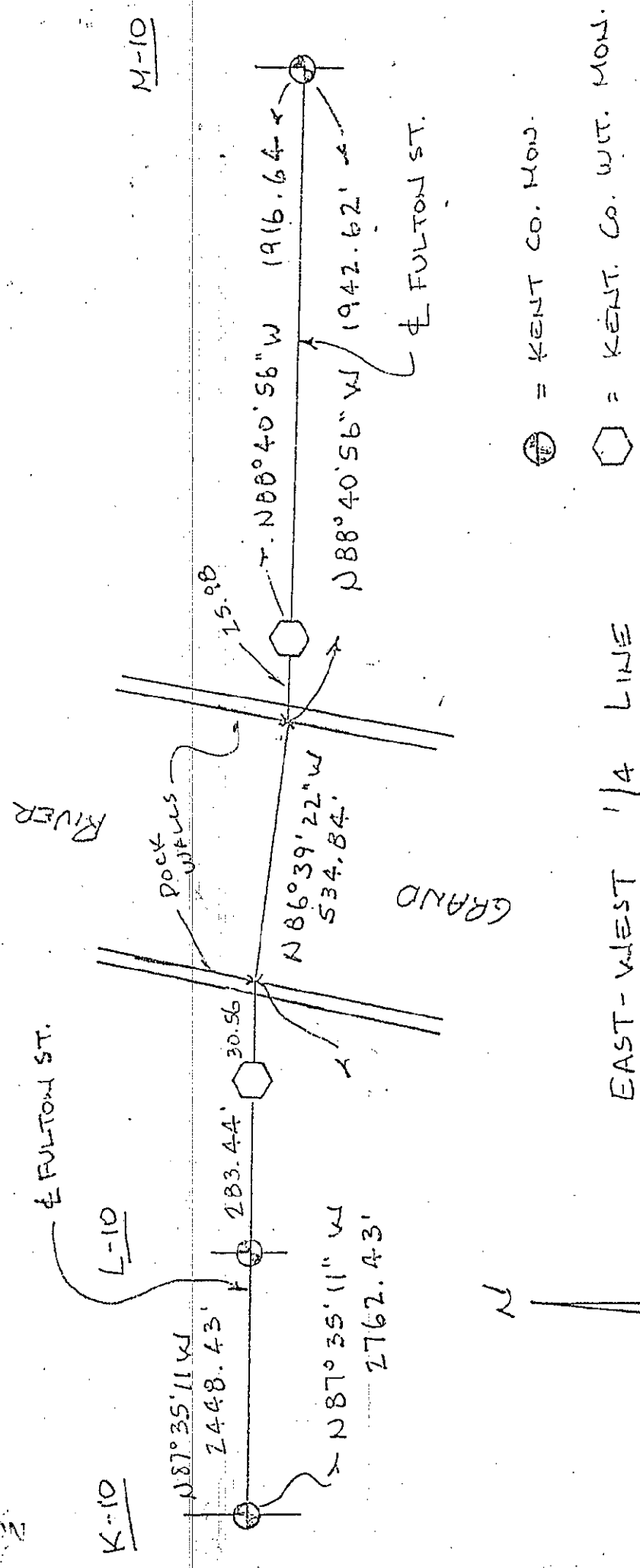
PEER APPROVED 6/27/96

CHAIRMAN Harry K. Hull

FORM APPROVED BY MICHIGAN STATE BOARD OF PROFESSIONAL SURVEYORS, JAN. 28, 1971
REVISED MAY 14, 1975
REVISED JAN., 1983
REVISED OCT., 1995

9199B

SURVEY &
REMONUMENTATION
FEB 14 1997
COMMISSION



⊙ = KENT CO. MON.

⬡ = KENT. CO. WIT. MON.

EAST-WEST 1/4 LINE
SEC. 25, T7N, R12W

N
No SCALE