

# **SURVEY & REMONUMENTATION**

FEB 14 1997

COMMISSION

KENT COUNTY REMONUMENTATION

LAND CORNER RECORDATION CERTIFICATE  
Filing Requirement of Act 74, Mich. P.A. 1970

For corners in  
**KENT COUNTY**  
(County)

Located In:

Corner Code #

1. Public Land Survey

T\_\_\_ R\_\_\_  
T\_\_\_ R\_\_\_  
T\_\_\_ R\_\_\_  
T\_\_\_ R\_\_\_

2. Property Controlling in Section

S 25 T 8N R 11W  
S\_\_\_ T\_\_\_ R\_\_\_

Wit. Mon. at  
Int. of N. and  
E. lines SW 1/4

3. Miscellaneous Property in Sec.

S\_\_\_ T\_\_\_ R\_\_\_  
S\_\_\_ T\_\_\_ R\_\_\_

"Other" code # 20

STATE OF MICHIGAN  
COUNTY OF KENT  
RECEIVED FOR RECORD  
96 OCT 18 AM 8:19  
REG. OF DEEDS  
9398 A

Register of Deeds Stamp & File Number

4. Lot No. \_\_\_\_\_, Recorded Plat \_\_\_\_\_  
5. Private Claims \_\_\_\_\_

I, Kirk Breitels, in a field survey on Oct. 4, 19 96 do hereby state that under requirements of P.A. 74, Michigan P.A. of 1970, the corner points mentioned in lines 1 and 2 above were in conformance with regulations and rules therefore as required in the current manual of survey instructions of the United States Department of the Interior, Bureau of Land Management or by a decree of a Court of Law and/or that the corner points mentioned in lines 3, 4 and 5 above were in conformance with the rules of the Michigan Board of Land Surveyors or by a Decree of a Court of Law; established, re-established, monumented, recovered, found as expressed below:

NOTE: Not more than 2 corners, all in the same town and range, may be recorded on this certificate.

	A	B	C	D	E	F	G	H	I	J	K	L	M
1													
2	6		5		4		3		2		1		
3													
4	7		8		9		10		11		12		
5													
6	18		17		16		15		14		13		
7													
8	19		20		21		22		23		24		
9													
10	30		29		28		27		26		25		
11													
12	31		32		33		34		35		36		
13													

A. Description of original monument and accessories and/or subsequent restoration:

1837---GLO---Not Set  
-----Williams & Works---No information  
1951---Kent Co. Wit.---Iron at C 1/4 corner  
27" Oak NNE 173.9' 20" Ash NE 160.5'  
1951-65---Surveys---Donker---Irons set on E-W 1/4 line - NO C 1/4 CORNER shown  
1980's---Surveys---Nederveld & Jonker, Exxel, MYK---N-S 1/4 line N. of the S 1/4 corner runs to an Iron in C/L Grand River Dr. ("Property Controlling Corner") - NO C 1/4 CORNER.

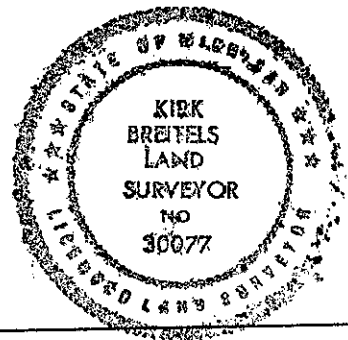
B. Description of corner evidence found and/or method applied in restoring or reestablishing corner:

Found nothing at the Central 1/4 cor. Established N-S 1/4 line per Irons found in the SW 1/4 & SE 1/4 (N & J, Exxel, MYK surveys). Established E-W 1/4 line per Irons found in the NW 1/4 and SW 1/4 (Donker surveys). An intersection these two lines to establishes a corner that is 67.8' E. and 4.0' N. of intersection of 1/4 lines. This point does not fit double distance from Donker 1/8 corner on the E-W 1/4 line (West 1/8 line). See sketch over.

The location described above is accepted by me and is generally accepted by professional surveyors as the best available evidence of the position of the property controlling corner.

C. Description of monument for corner and accessories established to perpetuate locating the position of the corner:

Set Standard Kent Co. Witness Monument per above description  
Set Nail & KC Remon. tag N. side cluster 4" Trees S70°W 23.16'  
Set Nail & KC Remon. tag W. side 40" Oak N10°E 164.28  
Set Nail & KC Remon. tag SE side 40" Oak N50°E 136.15'  
Set Nail & KC Remon. tag S. side 4" Basswood N85°E 61.42'



Signed by Kirk Breitels  
Surveyor's Michigan License No. 30077

Date 10/11/96

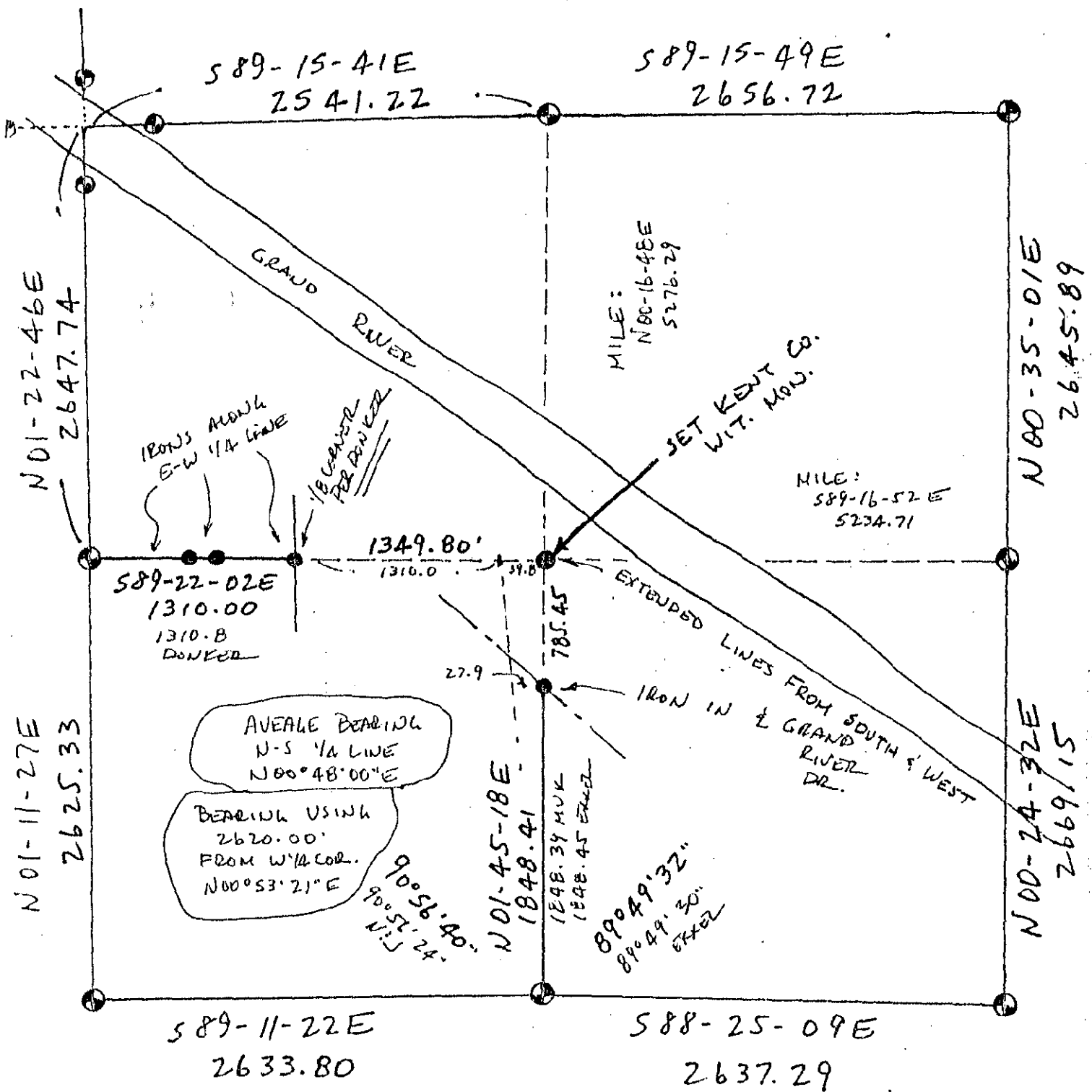
P.A. 345 1990 KENT COUNTY

PEER APPROVED 9/26/96

CHAIRMAN Kenneth Huber

FORM APPROVED BY MICHIGAN STATE BOARD OF PROFESSIONAL SURVEYORS, JAN. 28, 1996  
REVISED MAY 14, 1996  
REVISED JAN., 1996  
REVISED OCT., 1996

9398B



NO SCALE

SURVEY &  
REMONUMENTATION

FEB 14 1997

COMMISSION