

STACY &
ASSOCIATES
\$700
JAN 2 & 2000

KENT COUNTY REMONUMENTATION

LAND CORNER RECORDATION CERTIFICATE
Filing Requirement of Act 74, Mich. P.A. 1970

SECTION

For corners in

KENT COUNTY
(County)

Located In:

Corner Code #

Tyrone Twp.

1. Public Land Survey

T 10N R 12W

F-10

T R

T R

T R

T R

2. Property Controlling
in Section

S

T R

S

T R

3. Miscellaneous
Property in Sec.

S

T R

S

T R

4. Lot No. _____, Recorded Plat _____
5. Private Claims _____

I, Kirk Breitels, in a field survey on Nov. 23, 19 99 do hereby state that under requirements of P.A. 74, Michigan P.A. of 1970, the corner points mentioned in lines 1 and 2 above were in conformance with regulations and rules therefore as required in the current manual of survey instructions of the United States Department of the Interior, Bureau of Land Management or by a decree of a Court of Law and/or that the corner points mentioned in lines 3, 4 and 5 above were in conformance with the rules of the Michigan Board of Land Surveyors or by a Decree of a Court of Law; established, re-established, monumented, recovered, found as expressed below:

NOTE: Not more than 2 corners, all in the same town and range, may be recorded on this certificate.

A. Description of original monument and accessories and/or subsequent restoration:

F-10 Kent County Monument, LCRC #8747

Nail & KC Remon. tag E. side cluster 10" Maple

N05°W 53.11'

Nail & KC Remon. tag S. side P. Pole

S80°E 38.87'

Nail & KC Remon. tag SW side Twin 12" Elm

S40°E 81.38'

Nail & KC Remon. tag SE side 15" Cherry

S30°W 103.06'

Remains of N-S fence is 6' West ±

E-W power lines are 8' South ±

P.A. 345 1990 KENT COUNTY

PEER APPROVED 10/26/99
CHAIRMAN [Signature]

B. Description of corner evidence found and/or method applied in restoring or reestablishing corner:

F-10 Found BROKEN Kent County Monument

Fd. Nail & KC Remon. E. side cluster 10" Maple

N05°W 53.14'

Fd. Nail & KC Remon. S. side P. Pole

S80°E 38.85'

Fd. Nail & KC Remon. SW side Twin 12" Elm

S40°E 81.40'

E-W power lines are 8' South ±

C. Description of monument for corner and accessories established to perpetuate locating the position of the corner:

F-10 Removed and Replaced Standard Kent County Monument

Nail & KC Remon. tag E. side cluster 10" Maple

N05°W 53.14'

Nail & KC Remon. tag S. side P. Pole

S80°E 38.85'

Nail & KC Remon. tag SW side Twin 12" Elm

S40°E 81.40'

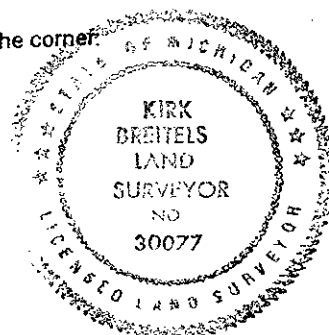
Nail & KC Remon. tag SE side 18" Cherry

S30°W 113.11'

E-W power lines are 8' South ±

Corner is at East edge of field drive and West edge of corn field

C/L field drive to East is 12' North ±



Signed by

[Signature]

Date

12/28/99

Surveyor's Michigan License No.

30077