

JAN 22 2001 Filed under Remonumentation Act 345 of 1990

LAND CORNER RECORDATION CERTIFICATE

SECTION

Filing Requirement of Act 74, Mich. P.A. 1970

For corners in

Lenawee

(County)

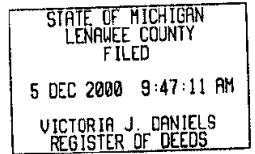
Located In:

Corner Code #



LIBER 2

PAGE 22



1. Public Land Survey T - 6 - S R - 2 - E M-4
T R
T R
T R
2. Property Controlling S T R
in Section S T R
3. Miscellaneous S T R
Property in Sec S T R

Register of Deeds Stamp & File Number

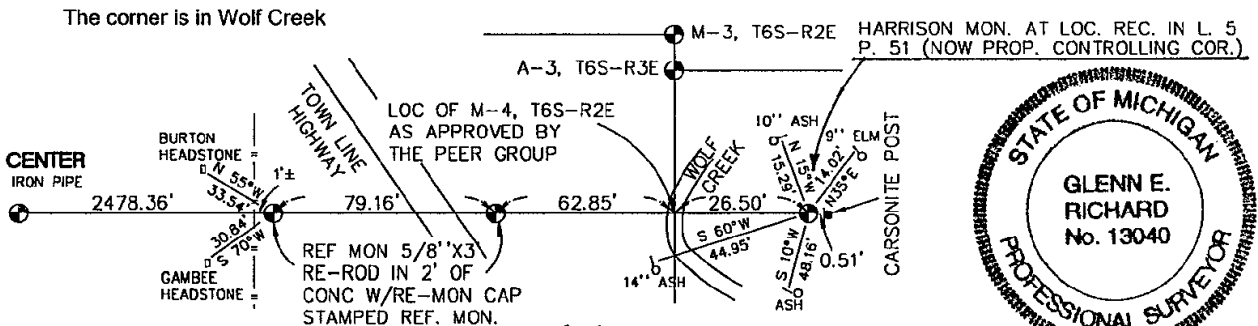
4. Lot No. _____, Recorded Plat _____
5. Private Claims _____

	A	B	C	D	E	F	G	H	I	J	K	L	M
1													
2	6	5	4	3	2	1							
3													
4	7	8	9	10	11	12							
5													
6	18	17	16	15	14	13							
7													
8	19	20	21	22	23	24							
9													
10	30	29	28	27	26	25							
11													
12	31	32	33	34	35	36							
13													

I, Glenn E. Richard, in a field survey on October 26, 2000, do hereby certify that under requirements of P.A. 74, Michigan P.A. of 1970, the corner points mentioned in lines 1 and 2 above were in conformance with regulations and rules therefore as required in the current manual of survey instructions of the United States Department of the Interior, Bureau of Land Management or by a decree of a Court of Law and/or that the corner points mentioned in lines 3, 4 and 5 above were in conformance with the rules of the Michigan Board of Land Surveyors or by a Decree of a Court of Law; established, re-established, monumented, re-monumented, recovered, found as expressed below:

NOTE: Not more than 4 corners, all in the same town and range, may be recorded on this certificate.

- A. Description of original monument and accessories and/or subsequent restoration:
G.L.O. 1824 Hervey Parke D.S. Set 1/4 Sec. post in creek W. Oak 10 S 6 W 92 No other 1965 Kenneth Suydam while employed for Walter Frazier did a survey in Section 12. Mr. Frazier computed a location for the corner by extending the fence line from the post at the center of Section 12 and the post at the east end on the west side of a cemetery on the west side of Townline Hwy. which is in both 1/4 Sections. He reestablished the town line by measuring 2640' east from the fence line on the North and South 1/4 line along the South line of Section 12 and at a point approximately 1130' north of the south line.
1982 I retraced Walter Frazier's survey and computations and set a 1 1/4" X 40" iron pipe on east bank of Wolf Creek and recorded it in Liber 5, Page 51
- B. Description of corner evidence found and/or method applied in restoring or reestablishing corner:
August 22, 2000 Kevin Pickford PS found 1 1/4" iron pipe @ location recorded in Liber 5 Page 51 and replaced it with a 30" Harrison Monument. The peer group rejected this location on 8/22/00.
October 12, 2000 I found a iron pipe 893' north that Kenneth Suydam had set at a old fence corner in 1964. Fences running N and E. He ran a line from A-3 T6S R3E as monumented by J.L. Richard in 1927 and described it as being the Section line. 1966 I had found the iron and ran a line north to the A-3 T6S R3E as monumented and described the line (occupied by a old fence) as being the Section line. Oct 2000 I tied in the iron pipe set by Kenneth Suydam in 1964 to a traverse we ran from M-3 T6S R2E to a iron pipe found at M-5 T6S R2E. I computed a point on the Southerly extension of a line from A-3 T6S R3E (as monumented) thru the iron pipe set by Kenneth Suydam in 1964 and a line between the Harrison Monument at the location of the recorded corner in Liber 5 Page 51 and a found iron pipe @ the center of Section 12 T6S R2E. This computed point is 26.50 feet west of the Harrison Monument. I set two reference monuments on the line between the iron pipe at the center of Section 12 and the Harrison Monument.
- C. Description of monument for corner and accessories established to perpetuate locating the position of the corner:



Ratified by Peer Group in accordance with P.A. 345 Co. Rep. Glenn E. Richard Date September 26, 2000

Signed by Glenn E. Richard Date Nov. 8, 2000
Glenn E. Richard

Surveyor's Michigan License No. 13040