

# SURVEY & REMONUMENTATION

OCT 21 1999

FILED

SECTION

## LAND CORNER RECORDATION CERTIFICATE

Filing Requirement of Act 74, Mich. P.A. 1970

For corners in

1998 DEC 11 P 12:44

NANCY HAVILAND  
REGISTER OF DEEDS  
LIVINGSTON COUNTY, MI.  
48843

L.S.C.#987m

Register of Deeds Stamp & File Number

LIVINGSTON  
(County)

Located In: HAMBURG Corner Code //

1. Public Land Survey T 1N R 5E 1 - 7

2. Property Controlling S T R

3. Miscellaneous S 14/15 T 1N R 5E 007 ✓

Property in Sec. S 15/22 T 1N R 5E 008

4. Lot No. Recorded Plat

5. Private Claims

I, BRYAN BOSS, in a field survey on OCTOBER 2, 19 98, do hereby certify that under requirements of P.A. 74, Michigan P.A. of 1970, the corner points mentioned in lines 1 and 2 above were in conformance with regulations and rules therefore as required in the current manual of survey instructions of the United States Department of the Interior, Bureau of Land Management or by a decree of a Court of Law and/or that the corner points mentioned in lines 3, 4 and 5 above were in conformance with the rules of the Michigan Board of Land Surveyors or by a Decree of a Court of Law; established, re-established, monumented, re-monumented, recovered, found as expressed below:

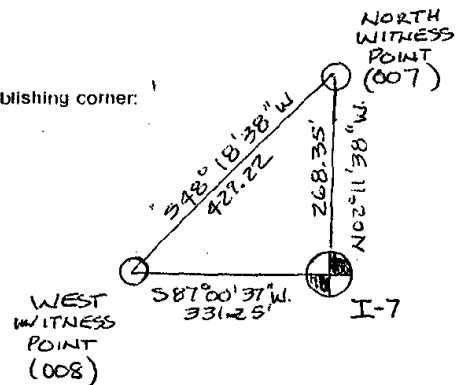
NOTE: Not more than 4 corners, all in the same town and range, may be recorded on this certificate.

A. Description of original monument and accessories and/or subsequent restoration:

NORTH BETWEEN SECTIONS 22 & 23  
69 CHAINS TO LAKE.  
80 CHAINS, SECTION CORNER IN LAKE

B. Description of corner evidence found and/or method applied in restoring or reestablishing corner:

SECTION CORNER FALLS IN GILL LAKE.  
SET WITNESS POINT 331.25 WEST ALONG THE SECTION LINE  
AT A FOUND IRON AT THE SOUTHEAST CORNER OF "OUT LOT C".  
SET WITNESS POINT 268.35 FEET NORTH ALONG THE SECTION LINE  
AT THE INTERSECTION WITH THE SOUTH R.O.W. AT WINANS LAKE ROAD.

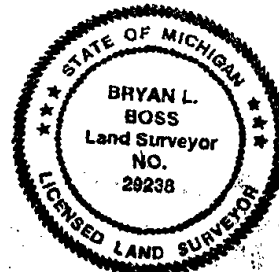


PA. 345 1988, APPROVED BY LIVINGSTON COUNTY  
PEER GROUP ON 9-30-98 CO. REP JED

C. Description of monument for corner and accessories established to perpetuate locating the position of the corner:

WEST WITNESS POINT (008)  
SET 1 1/4" X 3/8" PIPE WITH BRASS CAP  
STAMPED "LIVINGSTON CO. REMONUMENTATION  
WITNESS". 6 FEET NORTH OF SHORELINE  
WEST 1.92 SET NAIL & TAG S/S 6" COTTONWOOD  
N45W 19.58 SET NAIL & TAG NE/S 24" COTTONWOOD  
N30E 14.17 SET NAIL & TAG NW/S 24" COTTONWOOD  
S80E 4.92 SET NAIL & TAG N/S 6" TWIN IRONWOOD  
N87°E 331.25 TO COR. I-7

NORTH WITNESS POINT (007)  
SET 1 1/4" X 3/8" PIPE WITH BRASS CAP  
STAMPED "LIVINGSTON CO. REMONUMENTATION  
WITNESS". 23.5' SOUTH OF CL EAST WINANS  
LAKE ROAD AND 130' NORTH OF THE EDGE OF GILL LAKE  
WEST 17.96 SET REMON NAIL AND TAG S/S P. POLE  
S45W 70.27 SE CORNER CONC FOUNDATION GARAGE #5988  
NORTH 59.37 SET REMON E/S 10" MAPLE  
EAST 33.18 SET REMON NAIL AND TAG N/S  
12" HACKBERRY  
S 02°E 268.35' TO COR. I-7



Signed by Bryan L. Boss

Date DEC. 10, 1998

Surveyor's Michigan License No. 29238