

FILED

AUG 8 12 56 PM '94

LAND CORNER RECORDATION CERTIFICATE
Filing Requirement of Act 74, Mich. P.A. 1970

NANCY HAVILAND
REGISTER OF DEEDS
LIVINGSTON COUNTY, MI
48843

For corners in

Livingston
(County)

Located In:

Corner Code ##

1. Public Land Survey

T2N R 4E

K-10

T R

T R

T R

T R

2. Property Controlling
in Section

S T R

S T R

3. Miscellaneous
Property in Sec.

S T R

S T R

4. Lot No. , Recorded Plat

5. Private Claims

L.S.C.#201m

Register of Deeds Stamp & File Number

Charles E Garlock, in a field survey on June 7, 1994

I hereby certify that under requirements of P.A. 74, Michigan P.A. of 1970, the corner points mentioned in lines 1 and 2 above were in conformance with regulations and rules therefore as required in the current manual of survey instructions of the United States Department of the Interior, Bureau of Land Management or by a decree of a Court of Law and/or that the corner points mentioned in lines 3, 4 and 5 above were in conformance with the rules of the Michigan Board of Land Surveyors or by a Decree of a Court of Law; established, re-established, monumented, re-monumented, recovered, found as expressed below:

NOTE: Not more than 4 corners, all in the same town and range, may be recorded on this certificate.

A. Description of original monument and accessories and/or subsequent restoration:

GLO survey date: April 15, 1825 by S Sibley

GLO witnessess: B012-S44 1/2E-1.30 ch

Tam5-N5 1/2E-0.72 ch

	A	B	C	D	E	F	G	H	I	J	K	L	M
2	6		5		4		3		2		1		
3													
4	7		8		9		10		11		12		
5													
6	18		17		16		15		14		13		
7													
8	19		20		21		22		23		24		
9													
10	30		29		28		27		26		25		
11													
12	31		32		33		34		35		36		
13													

See additional data on rear of sheet.

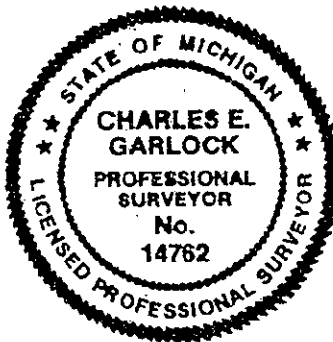
B. Description of corner evidence found and/or method applied in restoring or reestablishing corner:

Found 1/2" I. rod in edge of swamp

SURVEY &
REMONUMENTATION

SEP 26 1994

COMMISSION



C. Description of monument for corner and accessories established to perpetuate locating the position of the corner:

K-10; W 1/4 cor. Sec. 25, T2N-R4E, Marion Twp., Liv.Co. MI, reset found 1/2" I. rod with 1 1/4" X 36" I. Pipe with Liv. Co. Remon brass cap on top, found rock pile below ground surface and repiled rock around set I. Pipe.

S45E-23.13'-sp & tag S/s 6" maple

South-14.39'-sp & tag W/s 5" Elm

West-12.29'-sp & tag S/s 14" Maple

S80W-23.47'-sp & tag N/s 16" R Oak

West-14.12'-nearest edge of large rock 4' X 3' X 2'

North-1.5'±-Carsonite witness post

W 1/4 cor. is near the South edge of a swamp

P.A. 345 1990, APPROVED BY LIVINGSTON COUNTY
PEER GROUP ON 18 May 1994, CO. REP *[Signature]*

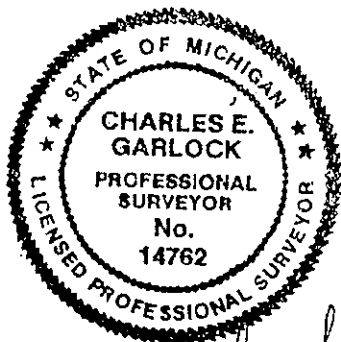
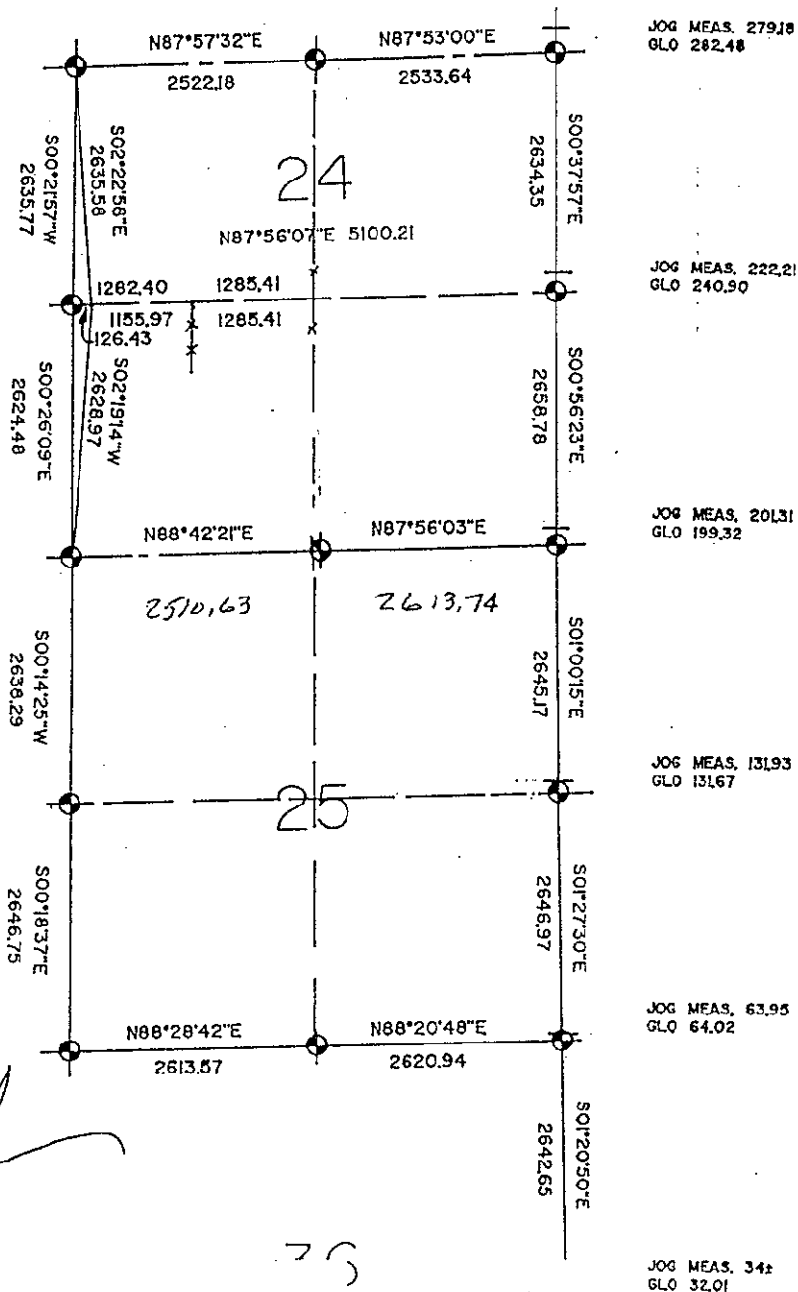
Signed by *Charles E Garlock* Date August 3, 1994


Surveyor's Michigan License No. 14762

K-10 W 1/4 Cor. Sec.25, Marion Twp., Livingston Co., MI

Earliest found witnesses by Co. Surveyors were Fairchild 1838 and Bullock 1882--both gone. Subsequent witnesses by C.W. Gordon 1948 and 1955 also gone but verified Corner from surveys by Gordon in 1948. Later surveys by Boss Engineering 1973, 1976 and 1979, P.L. Benton 1981 and myself in 1990 were to the same Iron and some of the witnesses were the same. Found old occupation North, South and West. Found old property corner irons West and South that matched the found 1/4 Corner. W 1/4 Corner is located on the Southern edge of a swamp in a wooded area. Measures from the 1/4 corner NO-14-25W 2638.29 feet to the NW corner Section 25 and SO-18-37E 2646.75 feet to the SW corner of Section 25.

Found no other irons in the area.



 *Charles E. Gresham*

2N-4E

K-123

4