

SURVEY &  
REMONUMENTATION

OCT 25 1993

COMMISSION

LAND CORNER RECORDATION CERTIFICATE  
Filing Requirement of Act 74, Mich. P.A. 1970

For corners in

Livingston  
(County)

Located In:

Corner Code ##

1. Public Land Survey

T 3N R 3E

K-12

T R

T R

T R

2. Property Controlling  
in Section

S T R

S T R

3. Miscellaneous  
Property in Sec.

S T R

S T R

4. Lot No. , Recorded Plat

5. Private Claims

Aug 26 9 12 AM '93  
NANCY HAVILAND  
REGISTER OF DEEDS  
LIVINGSTON COUNTY, MI  
48843

FILED

3m

L.S.C.#

Register of Deeds Stamp & File Number

I, Charles E Garlock, in a field survey on August 24, 19 93,  
do hereby certify that under requirements of P.A. 74, Michigan P.A. of 1970, the corner points mentioned  
in lines 1 and 2 above were in conformance with regulations and rules therefore as required in the  
current manual of survey instructions of the United States Department of the Interior, Bureau of Land  
Management or by a decree of a Court of Law and/or that the corner points mentioned in lines 3, 4 and 5  
above were in conformance with the rules of the Michigan Board of Land Surveyors or by a Decree of a  
Court of Law; established, re-established, monumented, re-monumented, recovered, found as  
expressed below:

NOTE: Not more than 4 corners, all in the same town and range, may be recorded  
on this certificate.

A. Description of original monument and accessories and/or subsequent restoration:

GLO notes: Sugar 12-S76E-21 lks

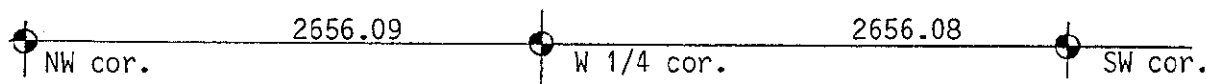
Maple 13-N69W-14 lks

Did not find plow point or witness trees as per I Teller, Co. Surveyor, in 1878 survey.

GLO notes April 15, 1825, S. Sibley

B. Description of corner evidence found and/or method applied in restoring or reestablishing corner:

Plow point in Old County Surveyors records not found; re-set corner on line with  
Northwest and Southwest Section corners at half distance, which matched East-West field  
occupation lines within 5 ft.±.



C. Description of monument for corner and accessories established to perpetuate locating the position of the corner:

Set 1 1/4" X 30" I. Pipe raised with 1 1/4" X 6" I. Pipe with brass cap marked: Liv.  
Co. Mon. Cor. at (-0.5')

N80E-17.65'-spike S/side 12" hickory

S30W-56.00'-sp E/side 36" W Oak

N40W-40.90'-spike E/side 30" W Oak

N25W-90.00'-spike E/side 36" W Oak

West-1'± to existing centerline of Smith Road.

APPROVED by Livingston County Monumentation  
Peer Group, July 21, 1993

Signed by

Date

August 25, 1993

Surveyor's Michigan License No.

14762

10/26/93