

SURVEY & REMONUMENTATION

OCT 25 1993

COMMISSION

For corners in

Livingston  
(County)

LAND CORNER RECORDATION CERTIFICATE  
Filing Requirement of Act 74, Mich. P.A. 1970

Located In:

Corner Code ##

1. Public Land Survey

T 3N R 5E  
T R  
T R  
T R

A-13

2. Property Controlling  
in Section

S T R  
S T R

3. Miscellaneous  
Property in Sec.

S T R  
S T R

4. Lot No. , Recorded Plat

5. Private Claims

I, Charles E Garlock, in a field survey on August 24, 19 93

do hereby certify that under requirements of P.A. 74, Michigan P.A. of 1970, the corner points mentioned in lines 1 and 2 above were in conformance with regulations and rules therefore as required in the current manual of survey instructions of the United States Department of the Interior, Bureau of Land Management or by a decree of a Court of Law and/or that the corner points mentioned in lines 3, 4 and 5 above were in conformance with the rules of the Michigan Board of Land Surveyors or by a Decree of a Court of Law; established, re-established, monumented, re-monumented, recovered, found as expressed below:

NOTE: Not more than 4 corners, all in the same town and range, may be recorded on this certificate.

A. Description of original monument and accessories and/or subsequent restoration:

GLO notes dated: June 6, 1823

GLO witnesses: W0 32-S87½E-40 lks

W0 8-N87E-60 lks

Additional historical data on back of sheet

B. Description of corner evidence found and/or method applied in restoring or reestablishing corner:

Found Monument Box (-0.5') and 1½" I. Pipe (-1.2') set by MDOT

C. Description of monument for corner and accessories established to perpetuate locating the position of the corner:

A13, SW corner Sec. 31 Oceola Twp. T3N-R5E, raised with 1 1/4" I. Pipe, 6" long with Liv. Co. Mon. cor. brass cap on top

S10E-105.65'-ctr. large DE pole

S70E-36.36'-spike N/s 15" Box Elder w/MDOT tag

S30E-104.92'-SW cor. Bldg. #101

S65E-69.15'-NW cor. Bldg #101

N85E-40.65'-spike N/s 18" Maple

East-3.5'-ctr. Lucy Road

Approved by Liv. Co. Peer Group August 18, 1993

Signed by

*Charles E Garlock*

Date

October 16, 1993

Surveyor's Michigan License No.

14762

FILED

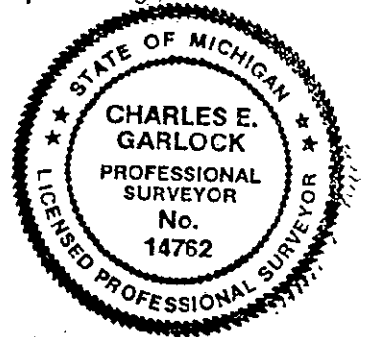
OCT 18 9 19 AM '93

NANCY HAVILAND  
REGISTER OF DEEDS  
LIVINGSTON COUNTY, MI  
48843

C.L.S.# 26m

Register of Deeds Stamp & File Number

	A	B	C	D	E	F	G	H	I	J	K	L	M
2	6	5	4	3	2	1							
3													
4	7	8	9	10	11	12							
5													
6	18	17	16	15	14	13							
7													
8	19	20	21	22	23	24							
9													
10	30	29	28	27	26	25							
11													
12	31	32	33	34	35	36							
13													



10/26/93

"Be Sure of Your Ground"

CHARLES E. GARLOCK

PROFESSIONAL SURVEYOR

840 EAST DAVIS ROAD  
HOWELL, MICHIGAN 48843

OFFICE: (517) 546-3340

FAX: 517 546-2941

July 27, 1993

A-13 SW cor. Sec. 31, Oceola Township,

Liv. Co. MI

Found one Act 74 recorded by MDOT in 1972 when they replaced 3/8" iron pipe inside a larger iron pipe in center of Lucy Rd. with a 1 1/2" iron pipe in a mon. box 3 inches below surface. Oldest known witness is to a 1 1/2" Gas Pipe by G.H. Dunning in 1920; found again in 1931 by C.W. Gordon, again by C.W. Gordon in 1945 and 1946 also with 3/8" iron pipe inside the bigger iron pipe and labeled it as a common township Corner. In 1971 I found the 3/8" iron pipe inside the larger gas pipe. Many surveys have been tied to this Corner by surveyors listed as:

L.A. Smith 1935 (Later Dean of Engr. at MSU)

C.W. Gordon 1935, 42, 45, 46, 48

L.W. Munsell 1954, 55, 57

Boss Engineering 1972, 78, 88

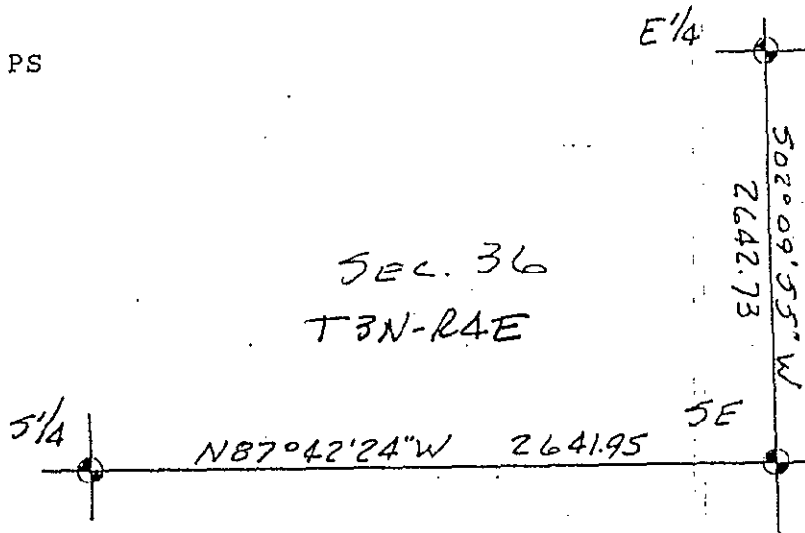
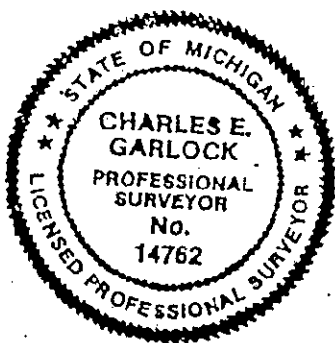
P.L. Benton 1972, 79

C.E. Garlock 1971, 73, 76, 82, 85, 88

MDOT 1972

The above surveys are located in Howell, Genoa and Marion Townships. Witnesses for this common Corner are also found in the above three Townships; many are the same distances to the same witness points. It is odd that I found nothing in Oceola Township. The mon. box and iron pipe is now located about 1 foot below the gravelled surface of Lucy Rd. with trees lining the West side of the Road but fairly open to the East.

Charles E. Garlock, PS



BK 16804

SUCCESSOR TO: JUNE 1993

MILES W. BULLOCK, L.S. (1844 TO 1926)

GRANT H. DUNNING, P.E. (1865 TO 1928)

CLAY W. GORDON, RLS (1883 TO 1970)

LYLE W. MUNSELL, RLS (1904 TO 1987)