

FEB 25 1999

SECTION

LAND CORNER RECORDATION CERTIFICATE
Filing Requirement of Act 74, Mich. P.A. 1970

FILED

For corners in
LIVINGSTON
(County)

Located In: Corner Code #

1. Public Land Survey T3N R6E H9
T R
T R
T R
2. Property Controlling S T R
in Section S T R
3. Miscellaneous S T R
Property in Sec. S T R

1998 OCT 20 P 1:22

NANCY HAVILAND
REGISTER OF DEEDS
LIVINGSTON COUNTY, MI.
48843

LSC936M

Register of Deeds Stamp & File Number

4. Lot No. , Recorded Plat
5. Private Claims

I, MARY BARNWELL, in a field survey on SEPT 17, 1998 do hereby state that under requirements of P.A. 74, Michigan P.A. of 1970, the corner points mentioned in lines 1 and 2 above were in conformance with regulations and rules therefore as required in the current manual of survey instructions of the United States Department of the Interior, Bureau of Land Management or by a decree of a Court of Law and/or that the corner points mentioned in lines 3, 4 and 5 above were in conformance with the rules of the Michigan Board of Land Surveyors or by a Decree of a Court of Law; established, re-established, monumented, recovered, found as expressed below:

NOTE: Not more than 2 corners, all in the same town and range, may be recorded on this certificate.

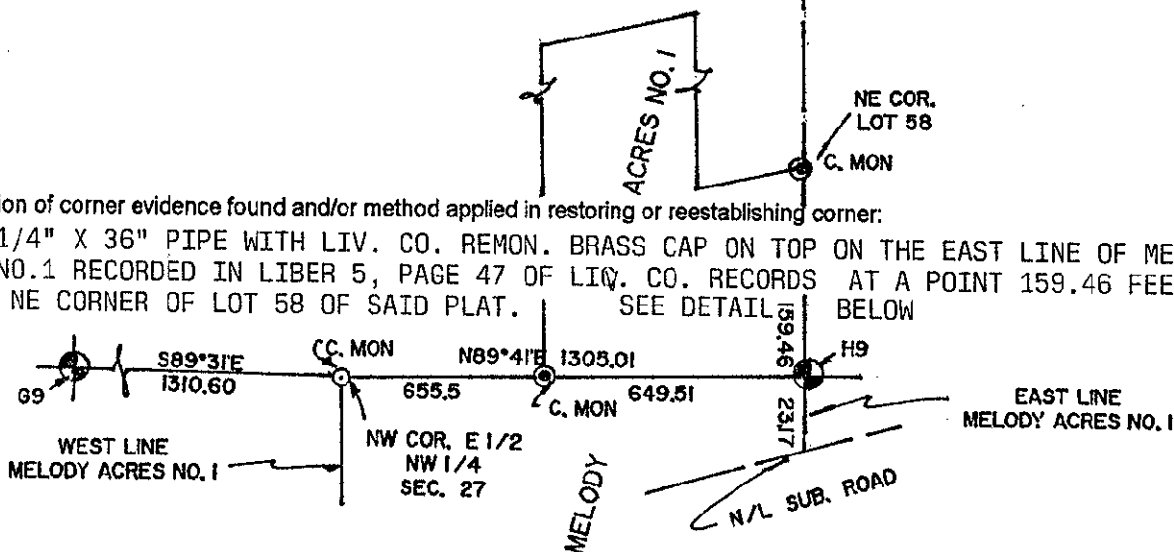
	A	B	C	D	E	F	G	H	I	J	K	L	M
1													
2	6		5		4		3		2		1		
3													
4	7		8		9		10		11		12		
5													
6	18		17		16		15		14		13		
7													
8	19		20		21		22		23		24		
9													
10	30		29		28		27		26		25		
11													
12	31		32		33		34		35		36		
13													

A. Description of original monument and accessories and/or subsequent restoration:

GLO SURVEY DATED MAY 24, 1823 BY S SIBLEY AND NONE OF THE GLO WITNESSES REMAIN.
GLO WITNESSES: W024 S59E 23.1'
W020 N11W 29.7'

B. Description of corner evidence found and/or method applied in restoring or reestablishing corner:

SET 1 1/4" X 36" PIPE WITH LIV. CO. REMON. BRASS CAP ON TOP ON THE EAST LINE OF MELODY ACRES NO.1 RECORDED IN LIBER 5, PAGE 47 OF LIV. CO. RECORDS AT A POINT 159.46 FEET SOUTH OF THE NE CORNER OF LOT 58 OF SAID PLAT. SEE DETAIL BELOW



C. Description of monument for corner and accessories established to perpetuate locating the position of the corner:

H9: S 1/4 COR. SEC. 22 T3N-R6E, HARTLAND TWP. LIV. CO. MI, SET 1 1/4" X 36" I. PIPE ON EAST LINE OF "MELODAY ACRES NO. 1" AS SHOWN ABOVE.
S30E-6.63'-SP & TAG E/S 48" OAK
N5E-30.38'-SP & TAG E/S 8" CHERRY
N80W-15.60'-SE COR. HSE #11497
EAST-29.30'-SW COR. OF GARAGE
N30E-5.77'-1/2" I. ROD CAP #39073, SET FOR S1/4 COR.
SOUTH-13.00'-1/2" I. ROD CAP #35999 SET FOR S1/4 COR.

Signed by _____
Surveyor's Michigan License No. 33971

Date SEPTEMBER 21, 1998



PA. 345 1990, APPROVED BY LIVINGSTON COUNTY
PEER GROUP ON 8-19-98, CO. REP JED