

SURVEY & REMONUMENTATION

JUL 30 1995

COMMISSION

LAND CORNER RECORDATION CERTIFICATE
Filing Requirement of Act 74, Mich. P.A. 1970

For corners in

LIVINGSTON
(County)

Located In:

Corner Code #

1. Public Land Survey

T 3N R 6E

(M-07) WITNESS

2. Property Controlling in Section

S 13/24 T3N R 6E

M-07 (1 of 3)

3. Miscellaneous Property in Sec.

S 13 T 3N R 6E

001

Nov 16 2 09 PM '95
NANCY HAVLAND
REGISTER OF DEEDS
LIVINGSTON COUNTY, MI
48843

FILED

L.S.C. #523m

Register of Deeds Stamp & File Number

4. Lot No. , Recorded Plat
5. Private Claims

Jack K. Smith in a field survey on November 10, 1995

Do hereby certify that under requirements of P.A. 74, Michigan P.A. of 1970, the corner points mentioned in lines 1 and 2 above were in conformance with regulations and rules therefore as required in the current manual of survey instructions of the United States Department of the Interior, Bureau of Land Management or by a decree of a Court of Law and/or that the corner points mentioned in lines 3, 4 and 5 above were in conformance with the rules of the Michigan Board of Land Surveyors or by a Decree of a Court of Law; established, re-established, monumented, re-monumented, recovered, found as expressed below:

NOTE: Not more than 4 corners, all in the same town and range, may be recorded on this certificate.

A. Description of original monument and accessories and/or subsequent restoration:

M-07 The Northeast Corner of Section 24, Hartland Township was not set by the GLO because it fell in Dunham Lake.

NOTE: THERE WERE NO ORIGINAL WITNESSES.
SEE THE BACK OF THIS SHEET FOR ADDITIONAL HISTORICAL DATA.

B. Description of corner evidence found and/or method applied in restoring or reestablishing corner:

M-07 This corner was set based on the collective recommendations of the Livingston County Peer Group members to try to agree in an east-west direction with irons used along the Township line in various subdivisions and in a north-south direction with the perceived intent of the Dunham Lake Plats to the west. This witness is for a reference monument north of the actual computed position of M-07.

C. Description of monument for corner and accessories established to perpetuate locating the position of the corner:

M-07 Northerly reference monument for the Northeast Corner, Section 24, T3N, R6E. Set brass cap marked as "Livingston County Remonumentation Witness" on existing concrete plat monument.

N30°E	Set nail and tag in NW side 16" Walnut	29.04'
S88°E	Set nail and tag in S side 8" Walnut	16.69'
S45°E	Set nail and tag in SW side 16" Oak	25.17'
S35°W	Set nail and tag in NW side 16" Walnut	37.13'

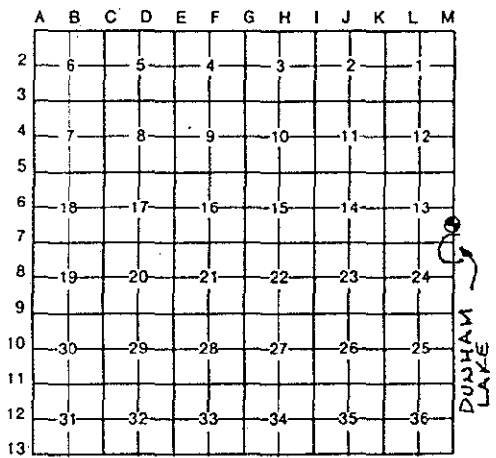
Signed by *Jack K. Smith*

Date November 12, 1995

Surveyor's Michigan License No. 35999



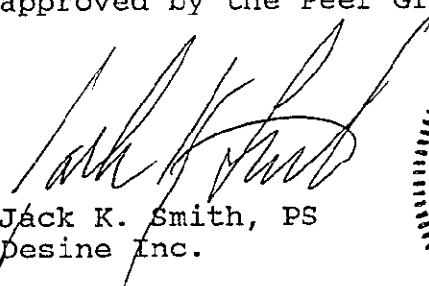
PA 345 1980, APPROVED BY LIVINGSTON COUNTY
PEER GROUP ON 9-20-95, CO. REP JED

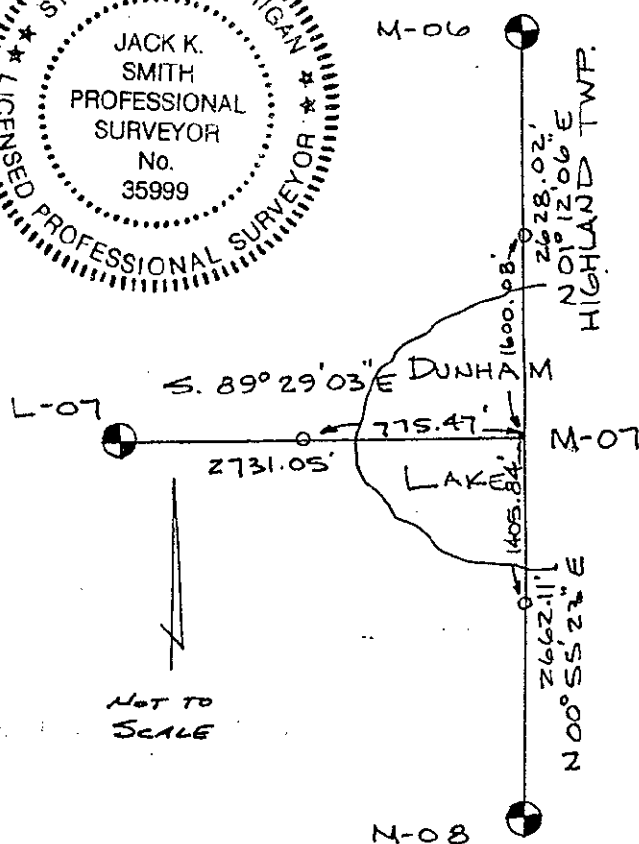
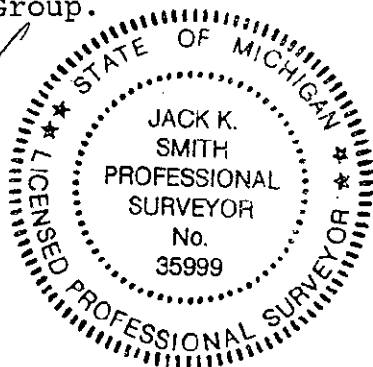


June 20, 1995
Revised September 12, 1995
Revised November 9, 1995

M-07 T3N - R6E: NORTHEAST CORNER, SECTION 24, HARTLAND TOWNSHIP

This Corner falls in Dunham Lake. The corner was originally recorded by Sibley as falling in the lake. The monumentation in the various Dunham Lake Estates Subdivisions does not fit well with the plat documents, but we were able to find what appears to be the original monument for the northwest corner of "Dunham Lake Estates South" in the fence around the park area on the south end of the lake. We also found a monument and irons on the north end of Dunham Lake that appear to mark the easterly boundary of "Dunham Lake Estates". In the Oakland County plat of "Dunham Lake Estates #1" there is a $00^{\circ}01'40''$ deflection in the line shown at the Northwest Corner of Section 19, T3N, R7E. Extension of the line from the Northwest Corner of Section 24 through the North 1/4 Corner of Section 24 falls 36 feet southerly of the 1/2 distance point. The extension of the centerline of Dunham Road to the east falls 0.81 feet southerly of the midpoint, but if extended westerly falls 32.20 feet north of the North 1/4 Corner of Section 24. Extension of the 1/4 Corners to the north and south of corner M-07 through the plat monuments to the 1/2 distance point (at M-07) miss each other by 1.12 feet. By taking the midpoint of the intersections the plat monuments would fall 0.2-0.3 feet off of matching the County line and the deflection at corner M-07 would be 5.32 feet (see sketch). After discussion by members of the Peer Group it was felt that the best compromise for the location of the corner would occur by using the found monumentation along the township line to redefine the east-west location of corner M-07, and an extension of line from Corner L-07 through the northeasterly corner of Dunham Lake Estates South would best agree with the apparent historical usage of the North line of Section 24. We will set reference monuments north, south and west of Dunham Lake as recommended and approved by the Peer Group.


Jack K. Smith, PS
Desine Inc.



ENTERED