

WAR 17 2000

SECTION

FILED

LAND CORNER RECORDATION CERTIFICATE
Filing Requirement of Act 74, Mich. P.A. 1970

For corners in
LIVINGSTON
(County)

Located In:

Corner Code #

JUL 29 P 12: 28

NANCY HAVILAND
REGISTER OF DEEDS
LIVINGSTON COUNTY, MI.
48843

1. Public Land Survey

T	R	
T	R	
T	R	
T	R	
T	R	
S	T	R
S	T	R
S 33	T 3N	R 6E
S	T	R

2. Property Controlling
in Section

3. Miscellaneous
Property in Sec.

011

cls # 1050m

Register of Deeds Stamp & File Number

4. Lot No. _____, Recorded Plat _____

5. Private Claims _____

I, CHARLES E GARLOCK, in a field survey on JULY 14, 1999 do hereby state that under requirements of P.A. 74, Michigan P.A. of 1970, the corner points mentioned in lines 1 and 2 above were in conformance with regulations and rules therefore as required in the current manual of survey instructions of the United States Department of the Interior, Bureau of Land Management or by a decree of a Court of Law and/or that the corner points mentioned in lines 3, 4 and 5 above were in conformance with the rules of the Michigan Board of Land Surveyors or by a Decree of a Court of Law; established, re-established, monumented, recovered, found as expressed below:

NOTE: Not more than 2 corners, all in the same town and range, may be recorded on this certificate.

	A	B	C	D	E	F	G	H	I	J	K	L	M
1													
2	6		5		4		3		2		1		
3													
4	7		8		9		10		11		12		
5													
6	18		17		16		15		14		13		
7													
8	19		20		21		22		23		24		
9													
10	30		29		28		27		26		25		
11													
12	31		32		33		34		35		36		
13													

A. Description of original monument and accessories and/or subsequent restoration:

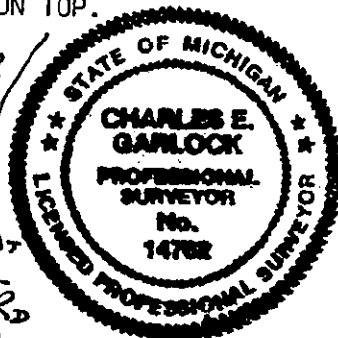
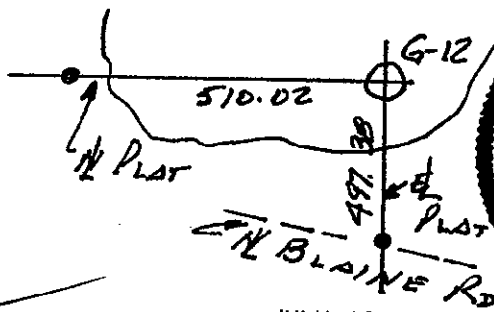
GLO SURVEY DATED MAY 24, 1823 BY S SIBLEY AND NONE OF THE GLO WITNESSES REMAIN
GLO WITNESSES: POST IN LAKE, NO POST OF BEARING TREES.

B. Description of corner evidence found and/or method applied in restoring or reestablishing corner:

G-12 IS LOCATED EAST 510.02 FEET FROM AN IRON PIPE SET ON THE NORTH LINE OF SECTION 33 AND THE NORTH LINE OF "PLEASANT VALLEY GOLF AND COUNTRY CLUB ESTATES" RECORDED IN LIBER 3 OF PLATS ON PAGE 16, LIV. CO. RECORDS. SAID PIPE IS WITNESSED BELOW.

C. Description of monument for corner and accessories established to perpetuate locating the position of the corner:

SET 1" X 36" IRON WITNESS PIPE WITH LIV. CO. REMON. BRASS WITNESS CAP ON TOP.
EAST-14.34'-SP & TAG N/S LIGHT POLE
S75W-123.70'-SP & TAG N/S 24" COTTONWOOD
N50W-169.65'-C/L E/S 30" MAPLE
NE'LY-41.7'-NEAREST EDGE OF LAKE.



Signed by

Charles E. Garlock

Date JULY 19, 1999

Surveyor's Michigan License No. 14762

P.A. 345 1990, APPROVED BY LIVINGSTON COUNTY

PEER GROUP ON 4-7-1999, CO. REP JED

FORM APPROVED BY MICHIGAN STATE BOARD OF PROFESSIONAL SURVEYORS, JAN. 28, 1971
REVISED MAY 14, 1975
REVISED JAN., 1983
REVISED OCT., 1995