

LAND CORNER RECORDATION CERTIFICATE Filing Requirement of Act 74, Mich. P.A. 1970

For corners in
Mackinac

(County)

Located In:

Corner Code ##

1. Public Land Survey	T	42N	R	7W	K2
	T	42N	R	7W	M5
	T	42N	R	7W	M4
	T		R		
2. Property Controlling	S		T	R	
in Section	S		T	R	
3. Miscellaneous	S		T	R	
Property in Sec.	S		T	R	

Register of Deeds Stamp & File Number

4. Lot No _____, Recorded Plat _____
5. Private Claims _____

M4 August 19, 1993
M5 August 19, 1993

I, Stephan J. Szyszkowski, in a field survey on K2 August 25, 1993, 19_____, do hereby certify that under requirements of P.A. 74, Michigan P.A. of 1970, the corner points mentioned in lines 1 and 2 above were in conformance with regulations and rules theretofore as required in the current manual of survey instructions of the United States Department of the Interior, Bureau of Land Management or by a decree of a Court of Law and/or that the corner points mentioned in lines 3, 4 and 5 above were in conformance with the rules of the Michigan Board of Land Surveyors or by a Decree of a Court of Law; established, re-established, monumented, re-monumented, recovered, found as expressed below

NOTE: Not more than 4 corners, all in the same town and range, may be recorded on this certificate.

A. Description of original monument and accessories and/or subsequent restoration.

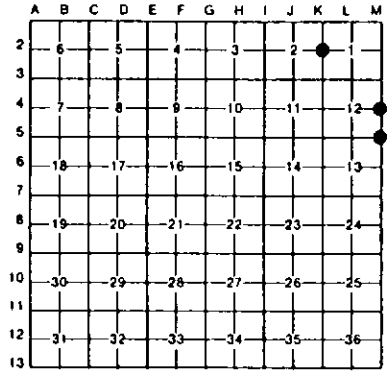
(K2) Quarter corner common to sections 1-2. Corner reestablished in 1970 by Billy D. Buckler, RLS, by proportionate measurement. Buckler placed a 1" pipe with a 4" aluminum cap for the corner and marked the following bearing trees: 15" Hard Maple S60E 8.1', 8" B. cherry N74W 11.0'.
(M5) Section corner common to sections 12-13 T42N-R7W and sections 7-18, T42N-R6W. Corner remonumented and witnessed by Billy D. Buckler, RLS, in 1961 and re-witnessed and recorded by Buckler in 1980. The 1980 witnesses are as follows: 13" S. Maple N20W 56 links in place from 6-20-60, 8" Beech S54E 54.4', 8" S. Maple N49W 48.2'.
(M4) Quarter corner common to Section 12, T42N-R7W and Section 7, T42N-R6W. Corner remonumented in 1963 by Billy D. Buckler, RLS and re-witnessed by same in 1980. 1980 record states: 1" pipe with 4" brass cap at corner. 10" H. Maple S24W 39.5 links marked 12-14-63 still green and in good condition. New bearings: 18" H. Maple N72E 41.1', 12" Beech N50W 49.2'.

B. Description of corner evidence found and/or method applied in restoring or reestablishing corner:

(K2) Buckler's monument has apparently been destroyed by road construction and was not recovered. The B. Cherry NBT was not recovered. Reestablished the corner on a straight line between section corners 2655.78' south and 2663.74' north, being the proportionate position. At the position for the corner, I buried a 1"x32" iron pipe capped with a yellow plastic cap stamped "MICH DNR LS 33986". Placed a measuring nail in a side blaze on Buckler's remaining NBT and measured as follows: 20" H. Maple S60E 9.05'.
(M5) Found both 1980 NBTs and NBT from 1961 13" S. Maple S66W 57 links, not N20W 56 links as noted in the 1980 record. The S. Maple N20W has been removed. Placed a PK nail in new asphalt pavement at record bearing and distance from the remaining NBTs and directly over strongest signal given by electronic metal locator. Marked new top blazes and set measuring nails with tags in the 3 remaining NBTs and marked one new tree as described below.
(M4) Found and accepted Buckler's monument at record bearing and distance from two of his witness trees: 14" H. Maple S24W, and 22" H. Maple N72E. Marked new top blazes on the record NBTs, placed measuring nails with tags in them, and remeasured as described below.

C. Description of monument for corner and accessories established to perpetuate locating the position of the corner:

(K2) Set a 1" pipe with plastic cap. Blazed, scribed and set measuring nails in the following new bearing trees: 12" Beech N34W 27.5' "1/4S NBT" 24" H. Maple S30W 22.1' "1/4S NBT" 6" H. Maple S71W 41.6' "1/4S NBT"	(M5) Set PK nail over iron in pavement. Set nails and tags in the previously recorded NBTs: 9" Beech S54E 54.7' 10" S. Maple N49W 48.6' 16" S. Maple S66W 37.7' Blazed, scribed, and set measuring nail with tag in the following NBT: 8" S. Maple S84E 31.4' A wood post with location poster is West 33.0'	(M4) Found 1" pipe with 4" brass Michigan Dept. of Conservation cap. 14" H. Maple S24W 26.7' (1963 NBT) 22" H. Maple N72E 41.8' (1980 NBT) Blazed, scribed, and set measuring nails with tags in the following NBTs: 7" Beech S01E 20.95' "1/4S NBT" 4" Beech N40W 18.95' "1/4S NBT" Placed a location poster on a 7" beech, at the edge of a trail, 21' south of the corner.
--	--	---



Signed by Stephan J. Szyszkowski
Surveyor's Michigan License No. 33985

Date 10-14-93