

LAND CORNER RECORDATION CERTIFICATE
Filing Requirement of Act 74, Mich. PA 1970

For Corners In:
Midland
(County)
Located In
Corner Code #

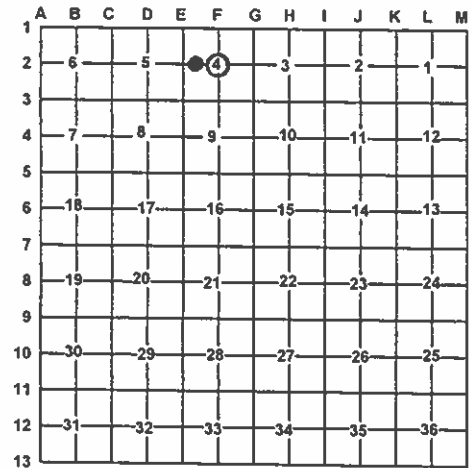
1. Public Land Survey T 14N R 1W F2
2. Property Controlling in Section S 4 T 14N R 1W 8
3. Miscellaneous Property in Section S T R

4. Lot No: Recorded Plat:
5. Private Claims:

I, Craig W. McVean, in a field survey on Sept. 16, 2012 do hereby state that under requirements of PA 74, Michigan PA of 1970, the corner points mentioned in lines 1 and 2 above were in conformance with regulations and rules therefore as required in the current manual of survey instructions of the United States Department of the Interior, Bureau of Land Management or by a decree of a Court of Law and/or that the corner points mentioned in lines 3, 4 and 5 above were in conformance with the rules of the Michigan Board of Land Surveyors or by a Decree of a Court of Law; established, re-established, monumented, recovered, found as expressed below:

NOTE: Not more than 2 corners, all in the same town and range, may be recorded on this certificate.

Register of Deeds Stamp & File Number



A. Description of original monument and accessories and/or subsequent restoration:

F2 - 1899 - CSR - L. 1, p. 40 & FB T14N, R1W, p. 2 - 8, F. J. Gibbs - Set Tamarack post with Stone at side. - 1981 - Rec. Survey - L. 3, p. 309 - R. L. Merry - Set RLS 19790

8 - 1899 - CSR - L. 1, p. 40 & FB T14N, R1W, p. 2 - 8, F. J. Gibbs - Set post

B. Description of corner evidence found and/or method applied in restoring or re-establishing corner:

F2 - C 1/4 Corner Sec. 4 - Excavated gravel road based on retracement of Gibbs 1899 survey. At 1.2' below grade found nest of 2 broken red bricks. Removed Brick and find definite post shadow 3" to 4" diameter of white sand into brown sand with excellent point on S. side of brick nest. Shadow to 2'± below grade. No evidence of stone. Gibbs noted "set post with brick on side" at CE 1/16 corner 1/4 mile to the east. Dug for this 1/16 corner also but didn't find. Accepted post shadow as the best available evidence of the position of the corner. Centerline of E-W gravel road is 4' South.

8 - CW 1/16 Corner Sec. 4 - Excavated gravel road searching for evidence of Gibb's post. 0.4' NW of calculated position for corner found a 1" ± vein of white sand into brown sand below. Wasn't positive this was Gibb's stake shadow so set 2" Alum. Cap on 5/8" x 34" rebar per Standard BLM procedure. Remains of fence to the north. Falls in centerline of E-W gravel road. Measured grid distance East 1320.88' (1320' - FJG) to 'F2' and West 1320.87' (1320' - FJG) to 'E2'

- Reference Point - S16°25'W 2.65' of 'F2' to found 1/2" rebar per Merry survey. Method used to set this position in unknown but doesn't conform to Gibb's survey or position. 1/2" rebar not utilized as 'F2' in this survey.

C. Description of monument for corner and accessories established to perpetuate locating the position of the corner:

F2 - At Fd. post shadow point set stamped 2 1/2" Brass Cap on 5/8" x 34" rebar with 6" x 5" plastic form with concrete around cap - Down 0.6'. Placed the broken brick pieces around and under the form as memorial. N8°W 24.07' to set N & T in W. side 30" W. Pine N55°W 43.98' to set N & T in SW side 13" Oak S15°W 50.15' to set N & T in E. side 9" W. Pine N60°E 92.19' to set N & T in NW side P. Pole S16°25'W 2.65' to Reference Pt. - 1/2" rebar

8 - Stamped 2" Alum. Cap on 5/8" x 34" rebar - 0.5'± below grade. North 33.00' to set 2" Alum. Cap on 5/8" x 34" rebar on line with Blue Carsonite Post with Loc. Tag. N65°E 60.93' to Top center stem of Fire Hydrant S50°W 58.50' to set N & T in NW side 16" W. Pine N60°W 61.04' to set N & T in SW side 22" W. Pine

Signed by:

Craig W. McVean

Surveyor's Michigan License No.:

39088

Date:

12/10/2012

