

MICHIGAN
DEPARTMENT OF CONSERVATION
FORESTRY DIVISION

LAND CORNER RECORD

T. 13 & 12 N.R. 25 W

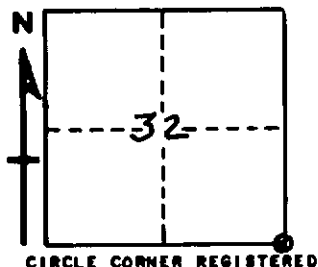
Marquette COUNTY

DESCRIPTION OF CORNER Section Corner Common to Sections 32, 33, 4 and 5

CORNER MONUMENT One-inch galvanized pipe with 4-inch aluminum cap

DATE MONUMENT PLACED AND WITNESSED May 4, 1962 by A. Metea and W. Oliver

WITNESSES TO CORNER..... Cedar 7 N 13 W 29.0 links



Cedar 8 S78W 37.5 links

Cedar 7 S21E 27.0 links

AND

DESCRIPTION IN DETAIL AS TO HOW CORNER WAS LOCATED AND IDENTIFIED OR RESTORED.

This corner was set from 2 original B.T.'s. The cedar B.T. to SW (a down cedar) showed the face and traces of scribe marks. The yellow birch B.T. to SE was also a down tree, with the face very distinct but scribe marks rotted away. A cedar to the NW had an open side which appeared to be a possible B.T., but the tree did not fit the field notes as the distance to corner was about 3 feet short. The fourth B.T. (hemlock) to NE had been completely destroyed as a small log hut once was constructed over the spot. An old 2" x 2" square post stood approximately at correct location and a newer 4" x 4" post set by A. Enger in 1958 stood at correct location. Set monument from the two positive B.T.'s.

SURVEYOR'S SEAL

SIGNED Arne A. Metea DATE 5/10/62
REGISTERED LAND SURVEYOR