

LAND CORNER RECORDATION CERTIFICATE
Filing Requirement of Act 74, Mich. P.A. 1970

For corners in
Marquette
 (County)

Located in:

Corner Code ://

1. Public Land Survey	T 45N	R 27W	26
	T	R	
	T	R	
	T	R	
2. Property Controlling in Section	S 17	T	R 7
	S	T	R 14
3. Miscellaneous Property in Sec.	S	T	R

Register of Deeds Stamp & File Number

4. Lot No. _____ Recorded Plat _____
 5. Private Claims _____

I, **Keith Sackett**, in a field survey on **October 5**, 19 **89**, do hereby certify that under requirements of P.A. 74, Michigan P.A. of 1970, the corner points mentioned in lines 1 and 2 above were in conformance with regulations and rules therefore as required in the current manual of survey instructions of the United States Department of the Interior, Bureau of Land Management or by a decree of a Court of Law and/or that the corner points mentioned in lines 3, 4 and 5 above were in conformance with the rules of the Michigan Board of Land Surveyors or by a Decree of a Court of Law, established, re-established, monumented, re-monumented, recovered, found as expressed below:

NOTE: Not more than 4 corners, all in the same town and range, may be recorded on this certificate.

A. Description of original monument and accessories and/or subsequent restoration:

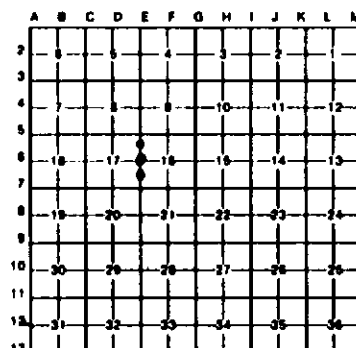
E6	7	14
Original monument and accessories not found. Found 1/2" iron pipe set by unknown person.	Not set on original survey nor subsequently, apparently.	Not set on original survey. Found 1/2" iron pipe set by unknown person.

B. Description of corner evidence found and/or method applied in restoring or reestablishing corner:

E6	7	14
Restored midway and on line.	Established midway and on line.	Established midway and on line.

C. Description of monument for corner and accessories established to perpetuate locating the position of the corner:

E6	7	14
Set 1" ID x 36" iron pipe v/4" aluminum cap.	Set 1" ID x 36" iron pipe v/4" aluminum cap.	Set 1" ID x 32" iron pipe v/4" aluminum cap.
5" r. pine N67W 22.9' 1/4s, NBT	12" j. pine N70E 13.3' 1/16s, BT	4" v. pine N26W 12.6' 1/16s, BT
7" oak S55W 31.3' 1/4s, NBT	12" j. pine N82W 22.6' 1/16s, BT	20" r. pine S19E 35.2' 1/16s, BT
6" j. pine N20E 7.2' 1/4s, NBT	5" j. pine S46W 31.3' 1/16s, BT	7" j. pine S73W 14.6' 1/16s, BT



Signed by

Keith Sackett

Date

August 31, 1990

Surveyor's Michigan License No.

19006

