

SURVEY & REMONUMENTATION

FEB 21 2001

SECTION

LAND CORNER RECORDATION CERTIFICATE Filing Requirement of Act 74, Mich. P.A. 1970

MARQUETTE COUNTY
MICHIGAN
RECEIVED FOR RECORD

200 DEC 22 AM 10:18

For corners in

MARQUETTE

(County)

Located In:

Corner Code #

1. Public Land Survey

T 48N R 26W

F-1

T R

T R

T R

2. Property Controlling
in Section

S T R

S T R

3. Miscellaneous
Property in Sec.

S T R

S T R

4. Lot No. , Recorded Plat

5. Private Claims

I, GERALD W. CARLSON, in a field survey on December 4 TH, 2000, do hereby state that under requirements of P.A. 74, Michigan P.A. of 1970, the corner points mentioned in lines 1 and 2 above were in conformance with regulations and rules therefore as required in the current manual of survey instructions of the United States Department of the Interior, Bureau of Land Management or by a decree of a Court of Law and/or that the corner points mentioned in lines 3, 4 and 5 above were in conformance with the rules of the Michigan Board of Land Surveyors or by a Decree of a Court of Law; established, re-established, monumented, recovered, found as expressed below:

NOTE: Not more than 2 corners, all in the same town and range, may be recorded on this certificate.

A. Description of original monument and accessories and/or subsequent restoration:

F-1: North Quarter Corner of Section 4, T48N-R26W.

Corner not established in Original GLO Survey.

No subsequent records recovered

B. Description of corner evidence found and/or method applied in restoring or reestablishing corner:

F-1: 2000: SCA survey crews conducted a thorough search of the area and found a 1/2" rebar placed next to a 3' high squared wood post. Blue paint lines running East and West were also noted. Line calls East and West matched in some instances but not in others. Corner position was established equidistant between the NW and NE corners of Section 4 and on line between the SE and S 1/4 corners of Section 33, T49N-R26W. Corner position lands in stream so a Witness Monument was set on line between the SE corner of Section 33 and the calculated N 1/4 corner position 30.00' horizontal distance East of the calculated 1/4 corner position.

SEE REVERSE SIDE FOR SKETCH

C. Description of monument for corner and accessories established to perpetuate locating the position of the corner:

F-1: 2000: Set Witness Corner a 2 3/8" O.D. aluminum pipe capped with a 3 1/4" diameter aluminum tablet Marquette County Survey Monument stamped to identify the corner. Monument is 0.25' above ground on the East bank of the stream 2.7' East of the waters edge. Referenced by:

8" Spruce
5" Balsam

S24E, 27.28'
N20W, 4.90'

7" Maple
6" Balsam

S03W, 7.34'
N49E, 24.38'

Green Steel Sign Post w/ Yellow Survey Marker Sign. S19E, 3.02'

Distances from calculated corner position, East 2642.66', West 2642.66'.

To calculated S1/4 of Section 33, T49N-R26W S89°53'40"W, 10.88'.

Note: Bearing trees have painted face, butt, and side nail blazes, d.h. measuring nails, and stamped B.T. Tags affixed.

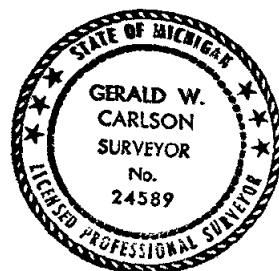
Bk. 15, Pg. 89 T48N-R26W Corner Search Sheet 2000035

LIBER R2 PAGE 287
Register of Deeds Stamp & File Number

	A	B	C	D	E	F	G	H	I	J	K	L	M
1													
2	6		5		4		3		2		1		
3													
4	7		8		9		10		11		12		
5													
6	18		17		16		15		14		13		
7													
8	19		20		21		22		23		24		
9													
10	30		29		28		27		26		25		
11													
12	31		32		33		34		35		36		
13													

RATIFIED BY PEER GROUP
P.A. 345 OF 1990

Gary J. Busse
DATE 11/6/00



Signed by Gerald W. Carlson

Date 12-19-00

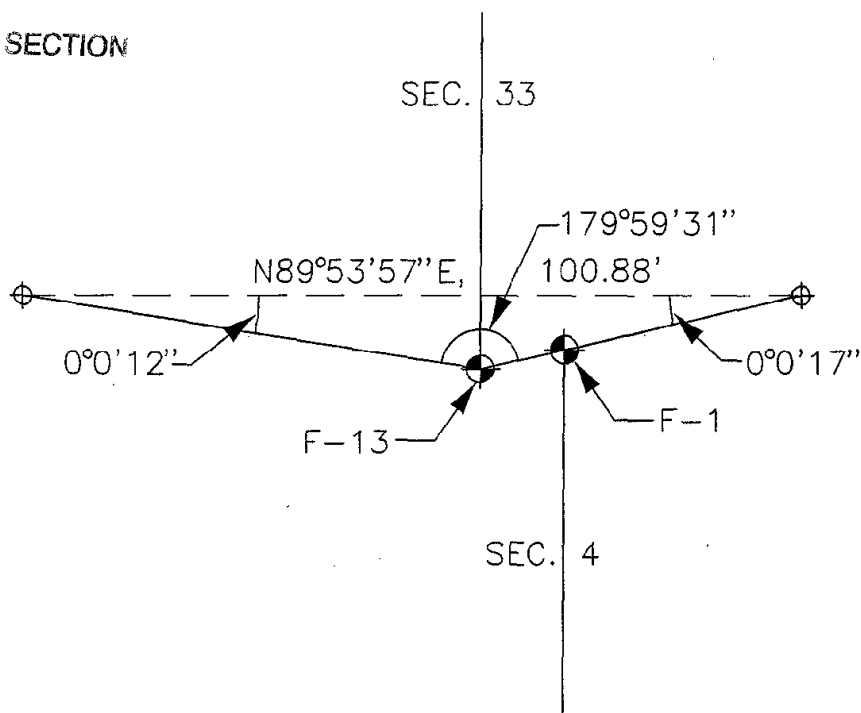
Surveyor's Michigan License No. 24589

FORM APPROVED BY MICHIGAN STATE BOARD OF PROFESSIONAL SURVEYORS, JAN. 23, 1971
REVISED MAY 14, 1975
REVISED JAN., 1983
GREEN ACT 402E

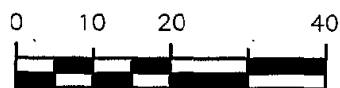
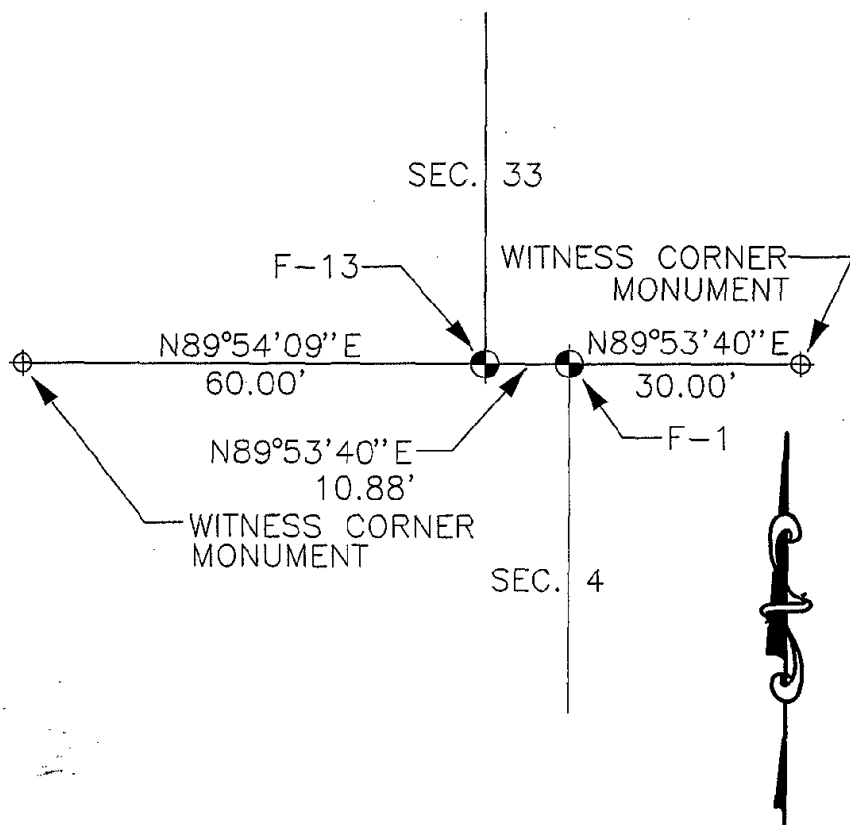
SURVEY &
REMONUMENTATION

FEB 21 2001

SECTION



NO SCALE



SCALE: 1" = 20'