

MICHIGAN
DEPARTMENT OF CONSERVATION
FORESTRY DIVISION

LAND CORNER RECORD

T. 33 N.R. 26 W

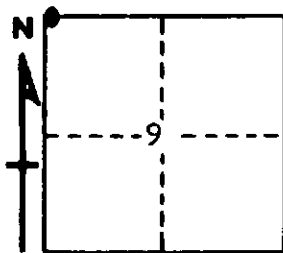
Menominee COUNTY

DESCRIPTION OF CORNER Section Corner for Sections 4-5-8-9

CORNER MONUMENT 1" Iron Pipe with 4" Aluminum Cap

DATE MONUMENT PLACED AND WITNESSED 5/21/65 Bray, Hinds and Nelson (a farmer in area)

WITNESSES TO CORNER..... 6" Cedar (S 5 NBT), N 45° W, 221 Lks.



6" Cedar (S9 NBT), S 50° E, 07-1/2 Lks.

5" Cedar (S4 NBT), N 45° E, 27 Lks.

AND

CIRCLE CORNER REGISTERED

DESCRIPTION IN DETAIL AS TO HOW CORNER WAS LOCATED AND IDENTIFIED OR RESTORED.

This Corner was replaced from two original BT's a Tamarack 8" S 38° W, 09 Lks., which is down, has upper face in very good condition, axe and scribe marks found on lower blaze. The Tamarack 8" N 55° W, 7 Lks. is in proper position but is badly rotted. A fairly new 4" x 4" post and point of old post ~~and~~ found at proper place for corner.

SURVEYOR'S SEAL

SIGNED Frank J. Bray DATE 6/8/1965
REGISTERED LAND SURVEYOR