

LAND CORNER RECORDATION CERTIFICATE
Filing Requirement of Act 74, Mich. P.A. 1970

For corners in

MENOMINEE
(County)

Located in:

Corner Code #

1. Public Land Survey

T_{37N} R_{25W}

D-5

2. Property Controlling in Section

S _____ T _____ R _____

3. Miscellaneous

S T R

Property in Sec.

S T R

4. Lot No. _____, Recorded Plat _____

5. Private Claims

I, William Lenca, in a field survey on Dec 04, 1995 do hereby state that under requirements of P.A. 74, Michigan P.A. of 1970, the corner points mentioned in lines 1 and 2 above were in conformance with regulations and rules therefore as required in the current manual of survey instructions of the United States Department of the Interior, Bureau of Land Management or by a decree of a Court of Law and /or that the corner points mentioned in lines 3, 4 and 5 above were in conformance with the rules of the Michigan Board of Land Surveyors or by a Decree of a Court of Law; established, re-established, monumented, recovered, found as expressed below:

NOTE: Not more than 2 corners, all in the same town and range, may be recorded on this certificate.

[illegible]

A. Description of original monument and accessories and/or subsequent restoration:

- 1852: Original Survey by George Adair - B.T.'s - Sugar, 12" - S09W - 08 lks; Sugar, 12" - N39°E - 23 lks. All original evidence has been destroyed by logging activities.
- 1899: Plat of Survey by Albert Hass, County Surveyor, shows a subdivision of Section 8, T37N-R25W, and states "*Set Cedar Post from Gov't B.T.*". No new ties are given.

B. Description of corner evidence found and/or method applied in restoring or reestablishing corner:

In our 1995 Remonumentation Survey in T37N-R25W, we retraced the South Line of Section 8, and found it to measure 5269.19 feet compared to Albert Hass' record distance of 5273.4 feet and the GLO record distance of 80 chains or 5280 feet. Since Albert Hass had set the SW Corner, S1/4 Corner and SE Corner of Section 8 from original government B.T.'s, we set corner D-5 by single proportionate measurement based on Hass' record measurement for the mile. This position agrees with a swamp call - East 1.5 chains (99 feet), and is accepted as a careful and faithful reestablishment of the position of the original corner.

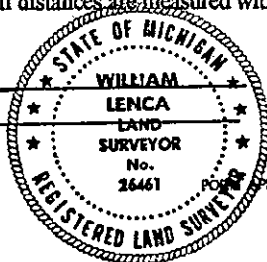
C. Description of monument for corner and accessories established to perpetuate locating the position of the corner:

Set 2" dia. Aluminum Pipe/3-1/4" dia. Alum cap stamped for corner location:

14" dia. Maple	N70°E	24.48 feet	Scr. NBT
12" dia. Maple	S15°E	32.02 feet	Scr. NBT
12" dia. Hemlock	S70°W	37.21 feet	Scr. NBT
9" dia. Maple	N30°W	35.05 feet	Scr. NBT
Metal Survey Sign Post	East	1.1 feet	

NOTE: All bearings are magnetic bearings. All distances are measured with steel tape. Distances to trees are to nail in side of tree.

Signed by William J. Jones
Surveyor's Michigan License No. 26461



Date Dec. 13, 1995

APPROVED BY MICHIGAN STATE BOARD OF PROFESSIONAL SURVEYORS, JAN. 28,
REVISED MAY 14,
REVISED JAN.,
REVISED OCT.,