

# SURVEY & REMONUMENTATION

MAR 29 2000

## SECTION

### LAND CORNER RECORDATION CERTIFICATE Filing Requirement of Act 74, Mich. P.A. 1970

Approved by Menominee County  
Land Survey Remonumentation  
Peer Group Under Act 345 Of  
P.A. Of 1990 On 12/28 1999  
Mr. Davis RLS  
Chairman

BK. 6 Pg. 34

RECEIVED FOR RECORD  
28 DEC 1999 3:56:09 PM  
BARBARA MORRISON  
REGISTER OF DEEDS  
MENOMINEE, MI 49858

Register of Deeds Stamp & File Number

For corners in  
MENOMINEE

(County)

Located In:

Corner Code #

1. Public Land Survey

T<sup>38N</sup> R<sup>28W</sup> E-09

T R

T R

T R

T R

2. Property Controlling  
in Section

S T R

S T R

3. Miscellaneous  
Property in Sec.

S T R

S T R

4. Lot No. \_\_\_\_\_, Recorded Plat \_\_\_\_\_

5. Private Claims \_\_\_\_\_

I, William Lenca, in a field survey on Apr., 1999 do hereby state that under requirements of P.A. 74, Michigan P.A. of 1970, the corner points mentioned in lines 1 and 2 above were in conformance with regulations and rules therefore as required in the current manual of survey instructions of the United States Department of the Interior, Bureau of Land Management or by a decree of a Court of Law and /or that the corner points mentioned in lines 3, 4 and 5 above were in conformance with the rules of the Michigan Board of Land Surveyors or by a Decree of a Court of Law; established, re-established, monumented, recovered, found as expressed below:

NOTE: Not more than 2 corners, all in the same town and range, may be recorded on this certificate.

	A	B	C	D	E	F	G	H	I	J	K	L	M
1													
2		6		5		4		3		2		1	
3													
4		7		8		9		10		11		12	
5													
6		18		17		16		15		14		13	
7													
8		19		20		21		22		23		24	
9													
10		30		29		28		27		26		25	
11													
12		31		32		33		34		35		36	
13													

A. Description of original monument and accessories and/or subsequent restoration:

- 1849: Original Survey by James H. Mullett - B.T.'s - Cedar, 10" - N35°W - 13 lks.; Cedar, 8" - S38°E - 21 lks. All original evidence for this corner has been destroyed by county road improvements.
- 1937: Survey Map by Earl R. Hall, Surveyor, & J.A. Dinsmore, Reg. Engineer, states "4 inch Sq. Cedar Post in". This map is in the possession of Dan Deacon, Twp. Supervisor & owner of land surveyed.

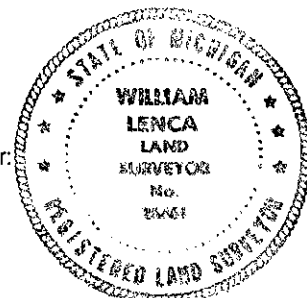
B. Description of corner evidence found and/or method applied in restoring or reestablishing corner:

We recovered a 6 inch squared wood post and remnants of an older squared wood post in position matching information in the 1937 Survey Map noted in Part "A" above. The old post is on the South side of a County Road running East, in line with the extension West of an ancient fence running East and in line with an old fence line running North. The distance from this corner to the 1/4 Corner 1/2 mile East is 2618.55 feet compared to the 1937 record measurement of 2619.8 feet. The distance from this corner to the 1/4 Corner 1/2 mile South is 2576.82 feet compared to the 1937 record measurement of 2580.5 feet. We accepted the location of the old squared wood post as the best available evidence of the position of the original corner.

C. Description of monument for corner and accessories established to perpetuate locating the position of the corner:

Set 3/4" dia. x 4' long aluminum rod/3-1/4" dia. Alum. cap stamped for corner.

12" dia. Cedar	N50°E	42.50 feet	Scr. NBT
8" dia. Cedar	S45°E	48.07 feet	Scr. NBT
5" dia. White Ash	S34°W	17.64 feet	Scr. NBT
10" dia. Cedar	N30°W	49.26 feet	Scr. NBT
Metal Survey Sign Post	South	1.8 feet	



NOTE: All bearings are magnetic bearings. All distances are measured with steel tape. Distances to trees are to nail in side of tree.

Signed by William Lenca 26461  
Surveyor's Michigan License No. \_\_\_\_\_

Date Dec. 18, 1999