

MICHIGAN  
DEPARTMENT OF CONSERVATION  
FORESTRY DIVISION

# LAND CORNER RECORD

T. 21-22N N.R. 5W

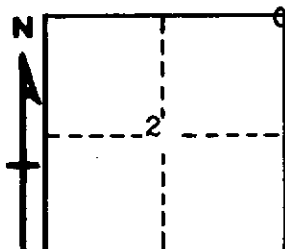
Missaukee COUNTY

DESCRIPTION OF CORNER Section corner common to sections 1, 2, 35, 36.

CORNER MONUMENT Set 1" pipe with 4" brass cap.

DATE MONUMENT PLACED AND WITNESSED January 3, 1962

WITNESSES TO CORNER..... 7" Cedar S51W 33.1



9" Cedar N22W 63.0

AND

CIRCLE CORNER REGISTERED

DESCRIPTION IN DETAIL AS TO HOW CORNER WAS LOCATED AND IDENTIFIED OR RESTORED.

This corner was found while making a survey in Section 2. Found old squared post which we conclude to have been established by Marcus Schaaf in 1938, at which time the U. S. BT's were identifiable. It also checks measurements of record west and south.

SURVEYOR'S SEAL

SIGNED

*Kenneth Postling*  
REGISTERED LAND SURVEYOR

DATE March 6, 1962