

LAND CORNER RECORDATION CERTIFICATE
Filing Requirement of Act 74, Mich. P.A. 1970

For corners in
MISSAUKIE

(County)

Located In:

Corner Code ##

1. Public Land Survey

T 21N R 5W
T _____ R _____
T _____ R _____
T _____ R _____

J-5

K-5

2. Property Controlling
in Section

S 11 T _____ R _____
S _____ T _____ R _____

16

3. Miscellaneous
Property in Sec.

S _____ T _____ R _____
S _____ T _____ R _____

Register of Deeds Stamp & File Number

4. Lot No. _____, Recorded Plat _____

5. Private Claims _____

I, CARL F. ROSER

in a field survey on NOVEMBER 28

, 19 87

do hereby certify that under requirements of P.A. 74, Michigan P.A. of 1970, the corner points mentioned in lines 1 and 2 above were in conformance with regulations and rules therefore as required in the current manual of survey instructions of the United States Department of the Interior, Bureau of Land Management or by a decree of a Court of Law and/or that the corner points mentioned in lines 3, 4 and 5 above were in conformance with the rules of the Michigan Board of Land Surveyors or by a Decree of a Court of Law, established, re-established, monumented, re-monumented, recovered, found as expressed below:

NOTE: Not more than 4 corners, all in the same town and range, may be recorded on this certificate.

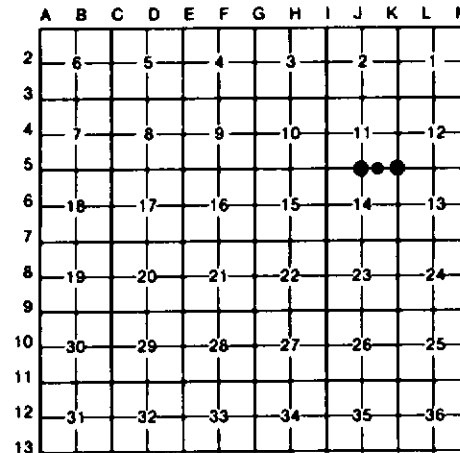
A. Description of original monument and accessories and/or subsequent restoration:

J-5

J-5 CONT.

K-5

16



B. Description of corner evidence found and/or method applied in restoring or reestablishing corner:

J-5

J-5 CONT.

K-5

16

KJO (1067) FD 1 1/4" SCHAAF PIPE; SCHAAF NOTES (1938) INDICATING HE HAD U.S.B.T. STP (Y PINE 18"), S05°E, 30.3'. FOR SOME REASON KJO ENDED UP SETTING S 1/4 COR S-11, N.P.O.L. (12.7'-N & 8.1'-E OF SCHAAF PIPE); KJO DID NOT HAVE BENEFIT OF FD 1907 MCBAIN CTR OF S-11 AS WE DO. WE THEREFORE HAVE MOVED THE KJO (DEPT MON) BACK TO SCHAAF'S

POSITION; WHICH FITS PROBABLE U.S.B.T.STP (S05°E, 30.3') THAT IS STILL EVIDENT AND FITS FD CTR OF S-11 (MCBAIN) AND RESTORED N 1/4 COR S-11 (TEED-1900) BETTER. A TRAIL RD THAT RUNS NW-SE IS 280' (±10') WEST.

PREV DEPT COR OF RECORD (KJO-1967). KJO FD N.SCHAAF (1938) PIPE & SCHAAF HAD U.S.B.T., 18" W PINE (STP), N60°W, 14.5' (STILL EVIDENT). OLD E-W, W-W FN REMAINS, W/B-W ON TOP, MOSTLY DOWN, IN TREES & FEW POSTS ON GROUND IS 47'±N.

SW COR OF SE 1/4-SE 1/4 OF S-11 SET PER STANDARD BLM INSTRUCTIONS.

C. Description of monument for corner and accessories established to perpetuate locating the position of the corner:

J-5

J-5 CONT.

K-5

16

DNR MON
7" R OAK N64°E 16.6'
7" W PINE N30°E 21.2'
18" Y PINE STB NORTH 10.7'
10" R OAK S04°W 20.0'

FD DEPT MON & SMALL SQ CED POST; SET NEW CED POST.
18" R PINE N15°W 49.8'
6" MAPLE N24°E 32.0'
21" W PINE S22°E 51.1'
3" MAPLE (CLP) S80°W 17.0'

DROVE 5/8" X 34" REROD W/RLS CAP & SET CED POST W/LOC TAG.
14" OAK (CLP-3) N51°W 20.1'
8" OAK N02°W 30.2'
8" OAK N76°E 29.9'
5" MAPLE S66°E 40.0'

Signed by Carl F. Roser 10-25-88

Date _____

Surveyor's Michigan License No. 12028

FORM APPROVED BY MICHIGAN STATE BOARD OF

