

LAND CORNER RECORDATION CERTIFICATE  
Filing Requirement of Act 74, Mich. P.A. 1970

For corners in  
MISSAUKEE

(County)

Located In:

Corner Code ##

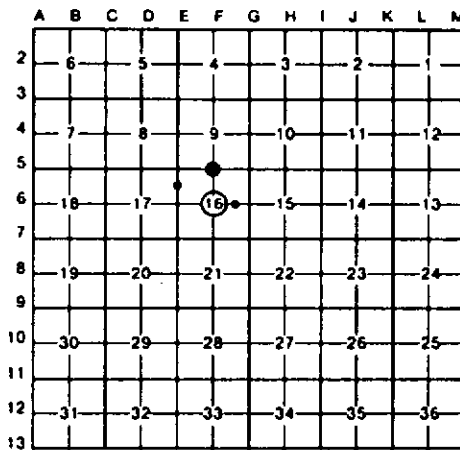
1. Public Land Survey T 23N R 6W F-5, F-6  
T R  
T R  
T R  
2. Property Controlling S 16 T R 3, 9  
in Section S T R  
3. Miscellaneous S T R  
Property in Sec. S T R

Register of Deeds Stamp & File Number

4. Lot No. , Recorded Plat  
5. Private Claims

I, CARL F. ROSER, in a field survey on AUGUST 27, 19 91, do hereby certify that under requirements of P.A. 74, Michigan P.A. of 1970, the corner points mentioned in lines 1 and 2 above were in conformance with regulations and rules therefore as required in the current manual of survey instructions of the United States Department of the Interior, Bureau of Land Management or by a decree of a Court of Law and/or that the corner points mentioned in lines 3, 4 and 5 above were in conformance with the rules of the Michigan Board of Land Surveyors or by a Decree of a Court of Law; established, re-established, monumented, re-monumented, recovered, found as expressed below:

NOTE: Not more than 4 corners, all in the same town and range, may be recorded on this certificate.



A. Description of original monument and accessories and/or subsequent restoration:

F-5 F-6 3 9  
("B" CONT) NW COR S-16 IS N88° 34'45"W, 2753.43' (2656.5'-BLD); GLO APPARENTLY DROPPED A TALLY OF 1 1/2 CHAINS IN W 1/2 MILE (THEY WOULD HAVE BEEN USING A 50 LINK CHAIN). CTR TRAIL RD INTERSEC N-S-W IS N35° W, 84'±. ALSO SEE ITEM "B" FOR CTR OF SEC 15.  
("B" CONTINUED)  
"LEAVE SWP" TIE SOME 20 CH'S EAST. SEE CORNER RECORD FOR N 1/4 COR SEC 16 AND ALSO ITEM "B" FOR CTR OF SEC 15.

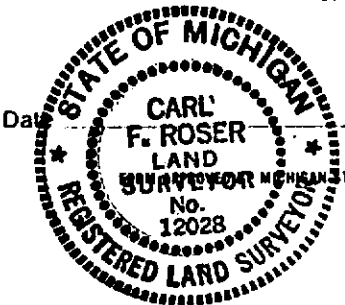
B. Description of corner evidence found and/or method applied in restoring or reestablishing corner:

F-5 F-6 3 9  
RESTORED 1/4 COR COMMON TO SEC'S 9 & 16 ON LINE BETW NE & NW CORB S-16, AND PER 1853 GLO RESURVEY "LEAVE SWP" TIE 20.25 CHAINS EAST (TO NEAREST CHAIN); 1337' GLO TO NEAREST CHAIN (NEAR 1303', CAN'T PICK SWP EDGE CLOSER THAN ± 15'. BUT IS DEFINITE SWP CALLED FOR IN GLO LINE NOTES). NE COR S-16 IS 988°34'45"E, 2662.82' (2656.5'-BLD); (CONTINUED IN "A")  
FD & ACCEPTED OLD 2" PIPE (4"± DEEP) FOR CTR OF SEC 16. COR FALLS IN APPROX CTR OF E-W GRAVEL RD (WALKER RD). THIS FD CTR FITS OCCUPANCY IN S 1/2 OF SEC 16; SEE RETRACEMENT SURVEY WORKING DRAWING IN SURVEY FILE. A CALC CTR OF SEC 16 (INTR 1/4 LINES) WOULD BE 15'± W; BUT N 1/4 COR SEC 16 SET FROM 1853 GLO RESURVEY (CONTINUED IN A)  
ESTABLISHED NE COR OF SE 1/4 OF NE 1/4 OF SEC 17 PER STANDARD BLM INSTRUCTIONS. CTR N-S TRAIL IS 212'± E.  
ESTABLISHED SE COR OF SW 1/4 OF NE 1/4 OF SEC 16 PER STANDARD BLM INSTRUCTIONS. COR IS IN CTR ± 1' OF E-W GRAVEL RD & IN LINE ± 2' WITH OLD FN TO SOUTH.

C. Description of monument for corner and accessories established to perpetuate locating the position of the corner:

F-5 F-6 3 9  
SET DNR MON & CED POST  
12" TW N PINE N75°W 153.6'  
9" MAPLE N53°W 106.7'  
7" N PINE N30°W 121.4'  
FD 2" PIPE.  
26" R PINE N48°W 75.78'  
9" TW MAPLE N15°E 44.99'  
11" R PINE S44°W 45.32'  
10" R PINE S20°E 36.67'  
DROVE 5/8" X 34" REROD W/LS CAP & SET CED POST W/LOC TAG.  
3" MAPLE(CLP3) N50°W 57.2'  
3" R PINE N30°E 51.4'  
9" J PINE S48°E 18.9'  
12" J PINE S52°W 13.9'  
DROVE 5/8" X 34" REROD W/RLS CAP.  
12" R. PINE S20°W 66.79'  
P. POLE N04°W 67.32'  
NW COR STONE FND OF TWP HALL S06°E 54.4'  
SET CED POST W/LOC TAG. NORTH 33'

Signed by Carl F. Roser 8/13/92  
Surveyor's Michigan License No. 12028



MICHIGAN STATE BOARD OF LAND SURVEYORS, JAN. 28, 1971  
REVISED MAY 14, 1975  
REVISED JAN., 1983