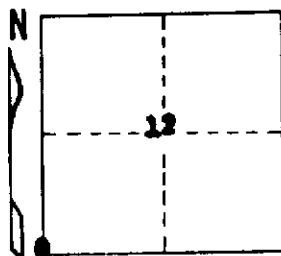


STATE OF MICHIGAN  
DEPARTMENT  
OF  
NATURAL RESOURCES

LAND CORNER RECORD

MISSAUCKEE COUNTY  
T 24 N R 6 W

DESCRIPTION OF CORNER SW Corner, Section 12  
CORNER MONUMENT Found 1 1/2" pipe. Set Cedar Guard Post  
DATE MONUMENT PLACED AND WITNESSED 7-26-71  
WITNESSES TO CORNER..... 7" W. Pine S 10 E 45.0'

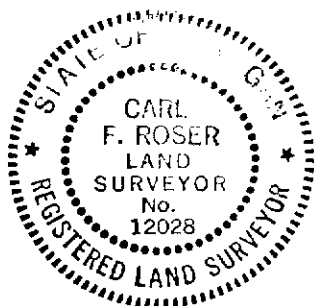


24" twin Maple N 80 W 38.3'  
20" twin Maple N 43 E 60.2'  
AND Corner fence post S 3 W 32.7'

CIRCLE CORNER REGISTERED

DESCRIPTION IN DETAIL AS TO HOW CORNER WAS LOCATED AND IDENTIFIED OR RESTORED.

Found 1 1/2" pipe in line with old fence to South. In longitude, the pipe fits distance East to SE corner of Sec. 12, very closely with Geo. Young survey along the N. line of Sec. 13.



SURVEYOR'S SEAL

SIGNED Carl F. Roser DATE 8-2-71  
REGISTERED LAND SURVEYOR 12028

DISTRIBUTION:

County Courthouse  
Area Forester (Regions I & II)  
District or Region Surveyor  
Forestry Div., Lansing

R 4047  
Rev. 10/68