

MICHIGAN
DEPARTMENT OF CONSERVATION
FORESTRY DIVISION

LAND CORNER RECORD

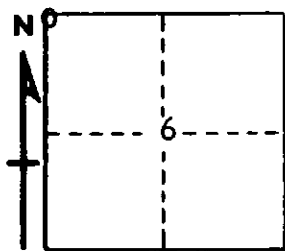
✓ T. 29 N.R. 2 E ✓ need folder
✓ T. 29 N.R. 1 - 3 E
✓ T. 30 N.R. 2 E ✓ need folder
T. 30 N.R. 1 - 3 E ✓ Montmorency COUNTY

DESCRIPTION OF CORNER Township corner common to Section 6-1-36-31

CORNER MONUMENT Set 1" pipe with 4" Aluminum cap at conc. monument

DATE MONUMENT PLACED AND WITNESSED April 22, 1966

WITNESSES TO CORNER.....



CIRCLE CORNER REGISTERED

7" R. Oak	S 49 E	23.1'
7" R. Oak	S 24 W	13.1'
8" R. Oak	North	16.2'

AND

DESCRIPTION IN DETAIL AS TO HOW CORNER WAS LOCATED AND IDENTIFIED OR RESTORED.

This corner was found while making a survey of Section 6. Found 4" concrete monument in place as established in previous survey. Two USBTs in place showing good faces. Very good original corner.

SURVEYOR'S SEAL

SIGNED Kenneth J. Ostling DATE April 26, 1966
REGISTERED LAND SURVEYOR #10068