

SURVEY
REMONUMENTATION

191420302

MAR 11 1999

LAND CORNER RECORDATION CERTIFICATE
Filing Requirement of Act 74, Mich. P.A. 1970

For corners in SECTION

Oakland
(County)

Located in: Commerce Corner Code #
Township

1. Public Land Survey T 2N R 8E D-7
T R
T R
T R
2. Property Controlling S T R
in Section S T R
3. Miscellaneous S T R
Property in Sec. S T R

4. Lot No. , Recorded Plat
5. Private Claims

I, Randy Kolehouse, in a field survey on June 9, 19 98, do hereby certify that under requirements of P.A. 74 Michigan P.A. of 1970, the corner points mentioned in lines 1 and 2 above were in conformance with regulations and rules therefore as required in the current manual of survey instructions of the United States Department of the Interior, Bureau of Land Management or by a decree of a Court of Law and/or that the corner points mentioned in lines 3, 4 and 5 above were in conformance with the rules of the Michigan Board of Land Surveyors or by a Decree of a Court of Law; established, re-established, monumented, re-monumented, recovered, found as expressed below:

NOTE: Not more than 4 corners, all in the same town and range, may be recorded on this certificate.

A. Description of original monument and accessories and/or subsequent restoration:

D-7 1823 Wampler G.L.O. Notes Set Post
N/A N/A O.C. Tax Maps N/A

B. Description of corner evidence found and/or method applied in restoring or reestablishing corner:

D-7 Found no information on record for this corner; corner falls in the Proud Lake State Recreation Area. Also checked with Detroit Edison who's electric transmission line runs Northeasterly and Southwesterly West of this corner; they have no record of using D-7. Established the location of this corner by first calculating the location of E-7 using double proportional measurements and then calculating D-7 on line between C-7 and E-7 at the mid-point. Set a **reference monument** on the Section line 824.59' East of D-7 (near boat launch).

Measure East 2647.10' to E-7 (G.L.O. = 2655.51')
Measure West 2647.10' to C-7 (G.L.O. = 2655.51')

C. Description of monument for corner and accessories established to perpetuate locating the position of the corner:

D-7 Set a 5/8" x 24" rebar with brass cap stamped "Oakland County Remonumentation P.S. #25854" 825.09' East of D-7.

N Face 3" Steel Post @ Ground Level S 75° E 0.15'
E Face 3" Steel Post @ Ground Level S 50° W 5.50'
NW Cor. Conc. Boat Ramp N 65° E 16.20'

PK Nail & Tag Stamped "Oakland Co. Remonumentation P.S. #25854" in N Face 12" Maple S 80° W 48.6'
PK Nail & Tag Stamped "Oakland Co. Remonumentation P.S. #25854" in W Face 14" Quaking Aspen N 65° W 114.20'

See sketch on back.

The selected location is accepted by the Contractor and is generally accepted by professional surveyors as the best available evidence of the position of the original corner.

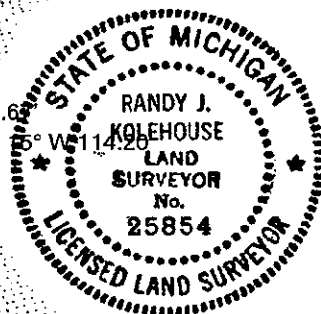
Signed by Randy J. Kolehouse Date Aug 3, 1998

EARTH TECH

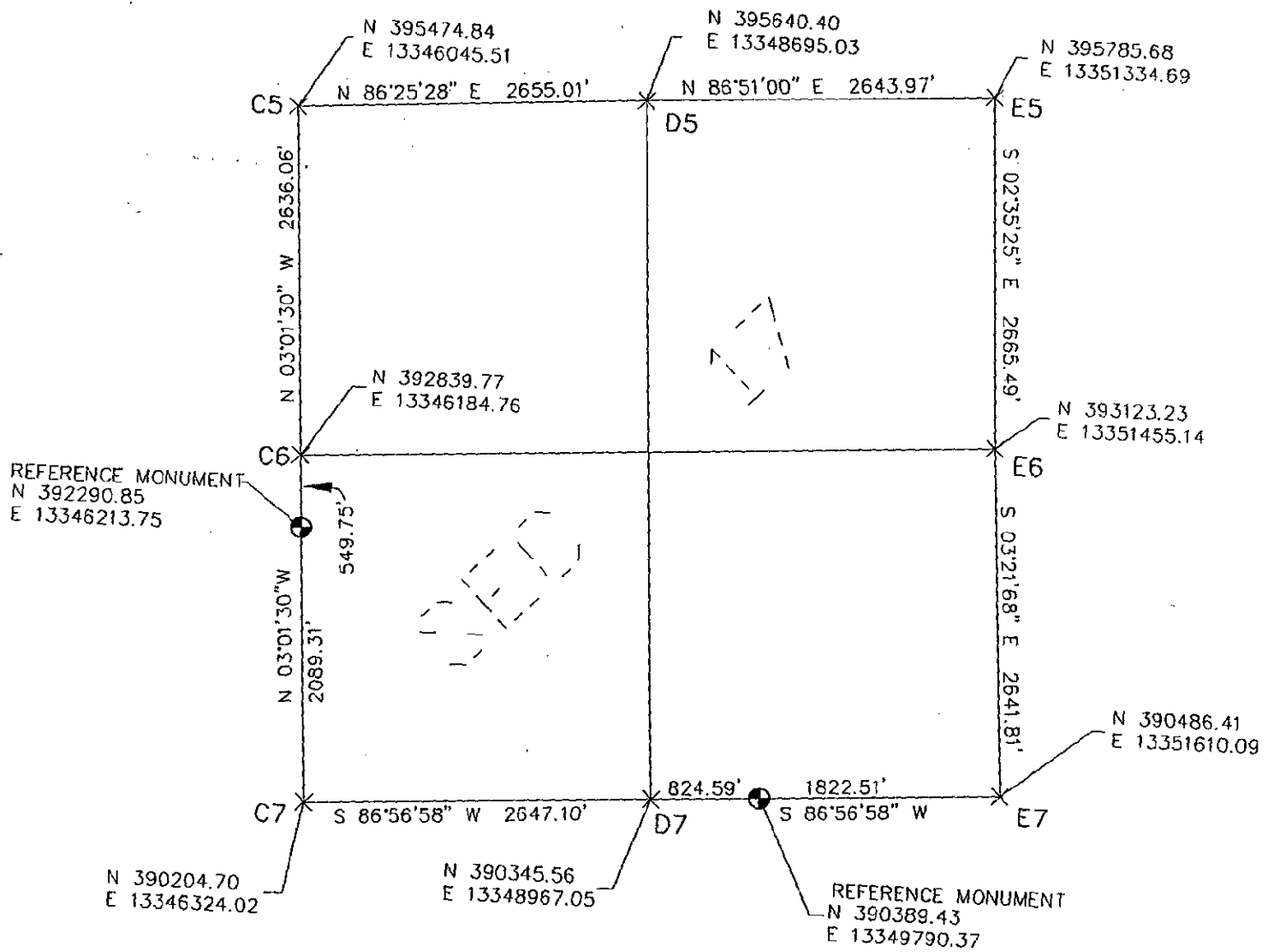
Surveyor's Michigan License No. 25854

HO-6-9832
\$9.00 MISCELLANEOUS RECORDING
\$2.00 REMONUMENTATION
6 NOV 98 09:50 AM 1998 RECEIPT # 28A
PAID
APPROVED ON: WILLIAM CAPPELL
RECORDED - OAKLAND COUNTY
OAKLAND COUNTY REMONUMENTATION
CLERK REGISTER OF DEEDS
Register of Deeds Stamp & File Number

	A	B	C	D	E	F	G	H	I	J	K	L	M
2	6		5		4		3		2		1		
3													
4	7		8		9		10		11		12		
5													
6	18		17		16		15		14		13		
7													
8	19		20		21		22		23		24		
9													
10	30		29		28		27		26		25		
11													
12	31		32		33		34		35		36		
13													



LIBER 19142PC303



SURVEY &
REMONUMENTATION
MAR 11 1999
SECTION