

SURVEY &
REMONUMENTATION

APR 07 1998

LIBER 18147 206

SECTION

LAND CORNER RECORDATION CERTIFICATE
Filing Requirement of Act 74, Mich. P.A. 1970

For corners in

Oakland

(County)

Located In Orion Twp.

Corner Code #

1. Public Land Survey

T 4N R 10E

M-9

2. Property Controlling
in Section

S

T

R

3. Miscellaneous
Property in Sec.

S

T

R

4. Lot No. , Recorded Plat

5. Private Claims

I, Huston K. Kennedy, in a field survey on 8/8, 19 97 do hereby state that under requirements of P.A. 74, Michigan P.A. of 1970, the corner points mentioned in lines 1 and 2 above were in conformance with regulations and rules therefore as required in the current manual of survey instructions of the United States Department of the Interior, Bureau of Land Management or by a decree of a Court of Law and/or that the corner points mentioned in lines 3, 4 and 5 above were in conformance with the rules of the Michigan Board of Land Surveyors or by a Decree of a Court of Law; established, re-established, monumented, recovered, found as expressed below:

NOTE: Not more than 2 corners, all in the same town and range, may be recorded on this certificate.

A. Description of original monument and accessories and/or subsequent restoration:

1817-GLO Wampler, D.S.; Set Post 3" White Oak S08°E 37 Links; 15" White Oak N27°E 49 Links

1.) 1977-Kennedy, PS #17623; LCRC L.7067, pg. 316 - Fnd 1 1/4" Iron Pipe & 1/2" Iron Rod 12.70 feet East

2.) 1991-Kohn, PS #26459; LCRC L.12129, Pg.s 042-043 - Fnd 1/2" Re-rod

3.) 1963-Johnson & Anderson; Unrecorded Survey - Fnd Iron Pin

4.) 1977-Kennedy, PS #17623; Unrecorded Survey - Fnd 1 1/4" Iron Pipe & 1/2" Iron Raod 12.70 feet East, used same wit as 1977 LCRC

5.) 1984-Kennedy, PS #17623; Unrecorded Survey - Fnd 1 1/4" Iron Pipe

B. Description of corner evidence found and/or method applied in restoring or reestablishing corner:

1997 Kennedy Surveying, Inc. - Kennedy, PS #17623 - I recovered the corner by using the LCRC recorded in Liber 7067, page 316 of Oakland County Records, the unrecorded Surveys by Kennedy, PS #17623 (10/24/77) and Johnson & Anderson Engineers (11/5/63). I verified the location of the corner by using M. Baldwin, Survey dated 1925. I did not accept the found corner.

Field measurements & sketch see back side of LCRC

C. Description of monument for corner and accessories established to perpetuate locating the position of the corner:

M-9 I set a 5/8" x 24" Iron Rod w/2" diameter brass cap stamped Oakland County Remonumentation, PS #17623
S29°W 69.15' Set PK & Remon Washer SE face Power Pole

S60°W 84.67' Set PK & Remon Washer North face 24" Oak

S45°E 47.45' Set PK & Remon Washer SE face 18" Apple

N10°W 165.86' Set PK & Remon Washer SW face Power Pole

North 136.00 feet corner common to Sections 18 & 19, T4N, R11E, Oakland Township (A-9)

N85°E 12.84 feet property controlling corner M-9

N02°46' E 136.77 feet property controlling corner A-9

The selected location is accepted by me and is generally accepted by Professional Surveyors as the best available evidence of the position of the original corner.

Signed by

Surveyor's Michigan License No.

17623

Date

10-27-97

\$ 9.00 MISCELLANEOUS RECORDING

\$ 2.00 REMONUMENTATION

26 FEB 98 12:27 P.M. RECEIPT# 52B

PAID RECORDED - OAKLAND COUNTY

LYNN D. ALLEN, CLERK/REGISTER OF DEEDS

Compliance with
ACT 345, P.A. 1990

APPROVED ON: 8-28-97-15
OAKLAND COUNTY REMONUMENTATION

PEER GROUP COMMITTEE
Register of Deeds Stamp & File Number

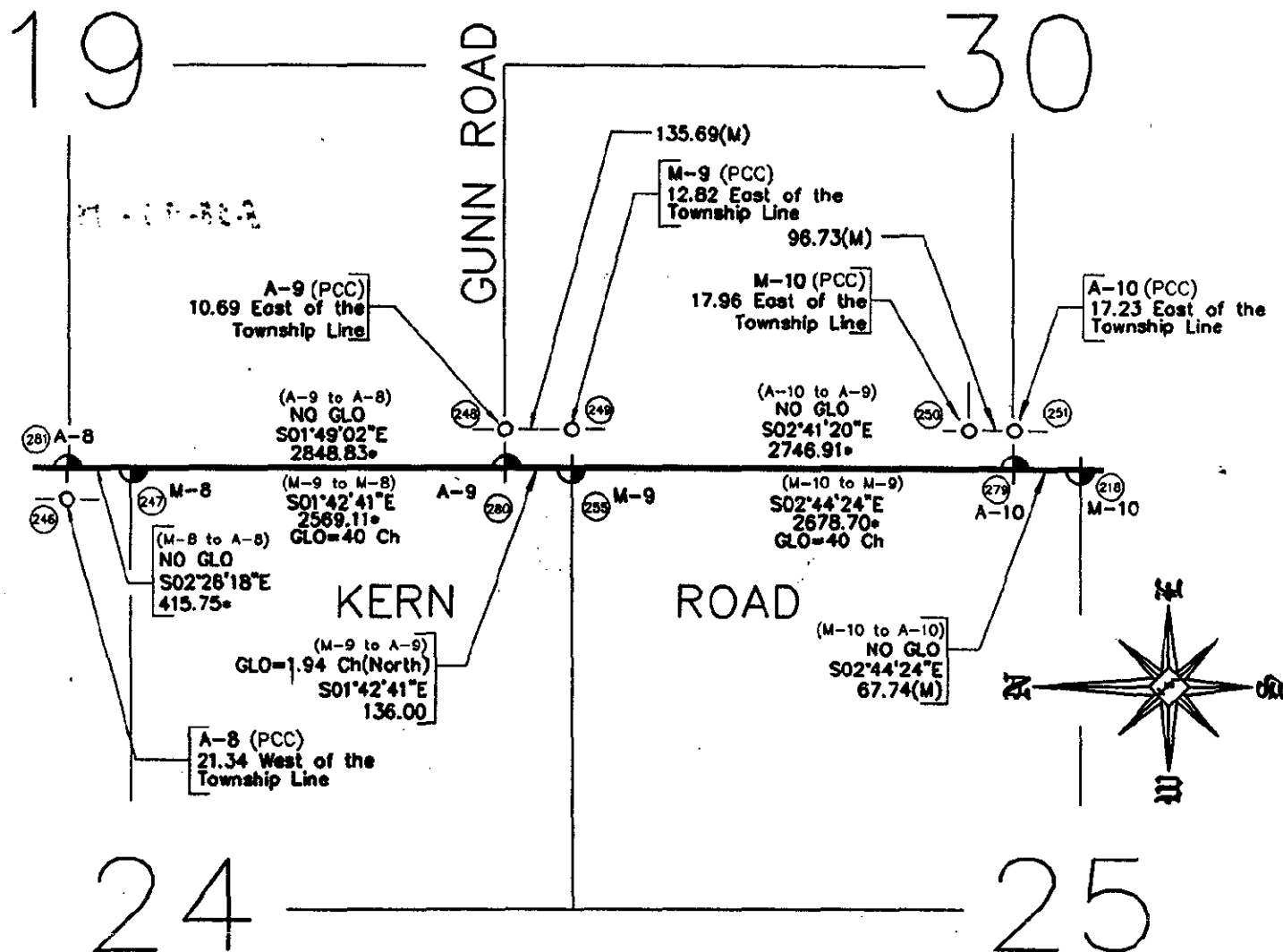
	A	B	C	D	E	F	G	H	I	J	K	L	M
1													
2	6		5		4		3		2		1		
3													
4	7		8		9		10		11		12		
5													
6	18		17		16		15		14		13		
7													
8	19		20		21		22		23		24		
9													
10	30		29		28		27		26		25		
11													
12	31		32		33		34		35		36		
13													



APR 07 1998

SECTION

OAKLAND TOWNSHIP
T4N,R11E



ORION TOWNSHIP
T4N,R10E

(Not To Scale)

LEGEND

PCC = Property Controlling Corner
* = Grid Measurement

M-9 to M-10

GLO = 40 Chains or 2640.00 ft.
GPS Measured 2678.70 ft.

A-9 to A-8

GLO = 40 Chains or 2640.00 ft.
GPS Measured 2569.11 ft.

A-9 to M-9

GLO = 1.94 Chains or 128.04 ft.
Ground Measured 136.00 ft.