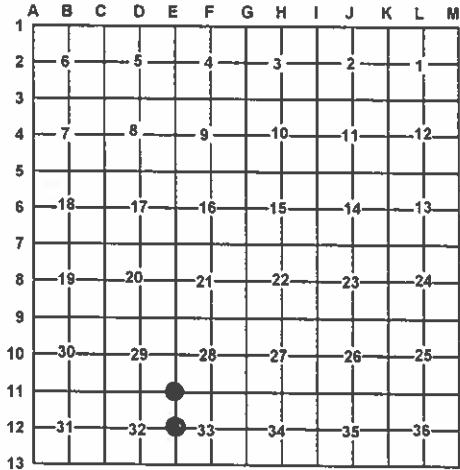


LAND CORNER RECORDATION CERTIFICATE
Filing Requirement of Act 74, Mich. PA 1970

For Corners In:
Ogemaw
(County)
Located In
Corner Code #
1. Public Land Survey
2. Property Controlling in Section
3. Miscellaneous Property in Section
4. Lot No:
Recorded Plat:
5. Private Claims:

Register of Deeds Stamp & File Number



I, Carl T. Kiiskila, in a field survey on October 24, 2005 do hereby state that under requirements of PA 74, Michigan PA of 1970, the corner points mentioned in lines 1 and 2 above were in conformance with regulations and rules therefore as required in the current manual of survey instructions of the United States Department of the Interior, Bureau of Land Management or by a decree of a Court of Law and/or that the corner points mentioned in lines 3, 4 and 5 above were in conformance with the rules of the Michigan Board of Land Surveyors or by a Decree of a Court of Law; established, re-established, monumented, recovered, found as expressed below:

NOTE: Not more than 2 corners, all in the same town and range, may be recorded on this certificate.

A. Description of original monument and accessories and/or subsequent restoration:
E-11 G.L.O. J.H. Mullet 1846 Set post corner to sections 28, 29, 32 and 33.
Wit: Y. Pine 18" N05°W 17 links
Y. Pine 16" S74°E 60 links
E-12 G.L.O. J.H. Mullet 1846 Set quarter section post
Wit: Y. Pine 20" N27°E 13 links
Y. Pine 20" N63°W 59 links
1936 Marcus Schaaf R.L.S. #3104 set a 1 1/2" pipe in concrete by proportionate measurement. No witnesses given.
Liber 1, page 48, 1973 Larry Cavanagh R.L.S. #17614 set a 1/2" X 18" iron bar for corner.
Wit: 14" W. Oak S15°E 41.15'
6" R. Oak N30°W 46.60'
8" R. Oak S65°W 47.05'
Liber 1, Page 310, 1984 Larry M. Gerschbacher R.L.S. #18990 found a 1 1/2" pipe in square concrete base
Wit: 12" W. Oak N38°W 83.02'
14" W. Oak N34°E 71.52'
14" W. Oak S18°E 43.70'
Liber 1, Page 48, 1973 Larry Cavanagh R.L.S. #17614 set a 1/2"x18" bar for corner.
Wit: 9" R. Oak N75°W 25.65'
20" R. Pine N20°E 39.72'
12" W. Oak N85°E 44.20'
Liber 2, Page 23, 1989 Glenn F. De La Mater R.L.S. #13030 found a re-rod w/RLS cap #17614 for corner.
Wit: N58°W 40.37' 14" R. Pine
N72°E 25.17' 6" Triple Oak
S40°E 19.68' 6" R. Pine

B. Description of corner evidence found and/or method applies in restoring or re-establishing corner:
E-11 Found 1 1/2" pipe with concrete base as set by Marcus Schaaf
E-12 Found 1/2" iron rod with battered P.S. cap fitting Glenn F. De La Mater's survey in section 33.

C. Description of monument for corner and accessories established to perpetuate locating the position of the corner:
E-11 Added P.S. cap #33981 to found 1 1/2" pipe
Wit: 8" Oak N58°W 42.14'
8" Oak N52°E 28.44'
8" Oak N44°W 17.49'
1/2" rod S45°W 3.75'
E-12 Replaced found 1/2" iron rod with 5/8" X 32" rerod and P.S. cap #33981
Wit: 8" Oak N71°E 25.14'
10" R. Pine S39°E 19.60'
10" Oak N33°E 22.47'
8" Oak N78°W 34.31'
Centerline of N-S trail West 10±

Signed by: Carl T. Kiiskila
Surveyor's Michigan License No.: 33981

Date: 11/9/05

