

LAND CORNER RECORDATION CERTIFICATE

Filing Requirement of Act 74, Mich. PA 1970

For Corners In:

Oscoda
(County)

Located In

Corner Code #

1. Public Land Survey		T		R	
		T		R	
2. Property Controlling in Section	S 10	T 28N	R 3E		8
	S 10	T 28N	R 3E		11
3. Miscellaneous Property in Section	S	T	R		
	S	T	R		

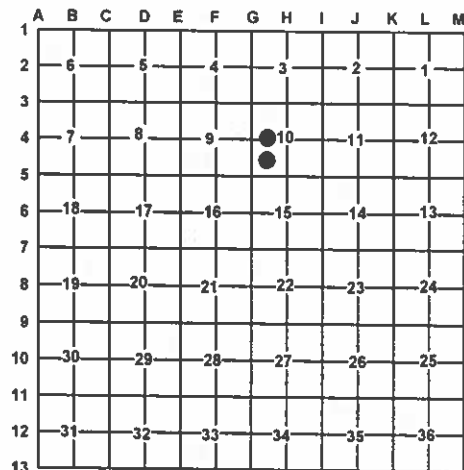
4. Lot No: Recorded Plat:

5. Private Claims:

I, Carl T. Kiiskila, in a field survey on September 13, 2006 do hereby state that under requirements of PA 74, Michigan PA of 1970, the corner points mentioned in lines 1 and 2 above were in conformance with regulations and rules therefore as required in the current manual of survey instructions of the United States Department of the Interior, Bureau of Land Management or by a decree of a Court of Law and/or that the corner points mentioned in lines 3, 4 and 5 above were in conformance with the rules of the Michigan Board of Land Surveyors or by a Decree of a Court of Law; established, re-established, monumented, recovered, found as expressed below:

NOTE: Not more than 2 corners, all in the same town and range, may be recorded on this certificate.

Register of Deeds Stamp & File Number



A. Description of original monument and accessories and/or subsequent restoration:

8- This corner position was not established during the original government survey.

11- This corner position was not established during the original government survey.

B. Description of corner evidence found and/or method applies in restoring or re-establishing corner:

8- Established the Northeast corner of the Northwest quarter of the Southwest quarter of section 10 as per B.L.M. instruction for the subdivision of a section.

11- Established the Southwest corner of the Northeast quarter of the Southwest quarter of section 10 as per B.L.M. instruction for the subdivision of a section.

C. Description of monument for corner and accessories established to perpetuate locating the position of the corner:

8- Set 5/8" X 32" iron rod with P.S. cap #33981

Wit: 22" Oak	S42°W	5.26'
8" Red Pine	S70°E	9.58'
14" Red Pine	N43°W	66.59'
15" Red Pine	N36°E	55.72'
Blue Carsonite Post	North	1'±

11- Set 5/8" X 32" iron rod with P.S. cap #33981

Wit: 5" Balsam	S54°W	36.73'
10" R. Pine	N52°W	9.76'
10" R. Pine	N31°E	14.34'
4" Maple	N67°E	18.57'
Blue Carsonite Post	North	1'±

Signed by:

Carl T. Kiiskila

Date:

3-14-07

Surveyor's Michigan License No.:

33981

