

MICHIGAN
DEPARTMENT OF CONSERVATION
FORESTRY DIVISION

LAND CORNER RECORD

T. 28 N.R. 1 W
T. 29 N.R. 1 W

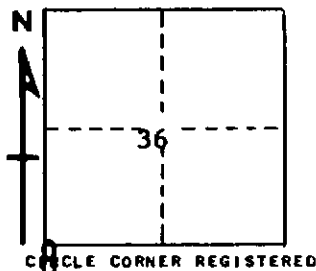
Crawford COUNTY
Otsego

DESCRIPTION OF CORNER Sec. corner common to Sections 1-2-35-36

CORNER MONUMENT Reset Brass Cap monument

DATE MONUMENT PLACED AND WITNESSED April 1968

WITNESSES TO CORNER.....



8" Oak S 65 W 20.7'

11" Oak S 13 W 18.1'

AND

DESCRIPTION IN DETAIL AS TO HOW CORNER WAS LOCATED AND IDENTIFIED OR RESTORED.

This corner was reset from 1953 location after adjustment of corner to 2-3-34-35. Set this corner by single proportionate measurement between town corner east, and restored section corner one mile west. This position also conforms acceptably to U.S. calls to physical features, and presents a better distribution of lands, particularly in Sec. 36. This position now used in Power Company survey.

SURVEYOR'S SEAL

SIGNED *Kenneth C. Estling* DATE 6/27/68
REGISTERED LAND SURVEYOR #10068