

LAND CORNER RECORDATION CERTIFICATE

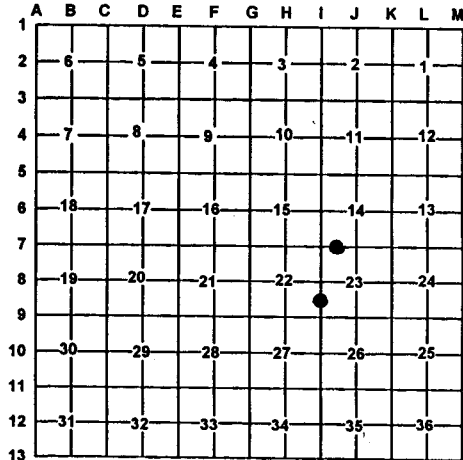
Filing Requirement of Act 74, Mich. PA 1970

For Corners In:		Located In	Corner Code #
Otsego			
(County)			
1. Public Land Survey	T	R	
	T	R	
2. Property Controlling in Section	S 14	T 30N R 4W	15
	S 23	T 30N R 4W	10
3. Miscellaneous Property in Section	S	T R	
	S	T R	
4. Lot No:	Recorded Plat:		
5. Private Claims:			

Register of Deeds Stamp & File Number

I, Carl T. Kiiskila, in a field survey on April 20, 1998 do hereby state that under requirements of PA 74, Michigan PA of 1970, the corner points mentioned in lines 1 and 2 above were in conformance with regulations and rules therefore as required in the current manual of survey instructions of the United States Department of the Interior, Bureau of Land Management or by a decree of a Court of Law and/or that the corner points mentioned in lines 3, 4 and 5 above were in conformance with the rules of the Michigan Board of Land Surveyors or by a Decree of a Court of Law; established, re-established, monumented, recovered, found as expressed below:

NOTE: Not more than 2 corners, all in the same town and range, may be recorded on this certificate.



A. Description of original monument and accessories and/or subsequent restoration:

15- Kenneth J. Ostling RLS# 10068 Established this corner while doing a survey for the Department of Conservation in 1961.

10- Kenneth J. Ostling RLS# 10068 Established this corner while doing a survey for the Department of Conservation in 1961.

B. Description of corner evidence found and/or method applies in restoring or re-establishing corner:

15- Re-established the Southeast corner of the Southwest quarter of the Southwest quarter of section 14 per standard BLM instructions for subdivision of a section.

10- Re-established the Northwest corner of the Southwest quarter of the Southwest quarter of section 23 per standard BLM instructions for subdivision of a section.

Kenneth J. Ostling's corner was apparently lost during road reconstruction.

Kenneth J. Ostling's corner was apparently lost during road reconstruction.

C. Description of monument for corner and accessories established to perpetuate locating the position of the corner:

15- Set 5/8" X 32" re-bar with PS cap # 33981
 Wit: 5" White pine N31°E 37.72'
 5" White pine N20°W 31.51'
 4" White pine S30°W 69.02'
 4" White pine S42°E 77.87'
 Centerline of E-W road South 3.4'
 Carsonite post North 33'±

10- Set 5/8" X 32" re-bar with PS cap # 33981
 Wit: Utility pole N74°W 13.41'
 Guy pole N75°E 53.53'
 Utility pole S16°W 71.80'
 14" White pine S37°E 101.79'
 Centerline N-S road East 18'

Signed by:

Carl T. Kiiskila

Date:

1-20-00

Surveyor's Michigan License No.:

33981

