

# SURVEY & REMONUMENTATION

FEB 27 1998

## SECTION

### OTTAWA COUNTY REMONUMENTATION LAND CORNER RECORDATION CERTIFICATE Filing Requirement of Act 74, Mich. P.A. 1970

For corners in  
Ottawa

(County)

Located In:

Corner Code #

1. Public Land Survey

T5N

R16W

T

R

T

R

T

R

M-10, 11

Southeast corner

Section 25

Reference monument

2. Property Controlling  
in Section

S25

T5N

R16W

S

T

R

3. Miscellaneous  
Property in Sec.

S

T

R

S

T

R

PARK TWP.

SEQUENTIAL

CORNER #2

RECORDED

97 DEC -8 AM 11:33

*Sam H. H. H.*  
REGISTER OF DEEDS  
OTTAWA COUNTY, MI

Register of Deeds Stamp & File Number

4. Lot No. \_\_\_\_\_, Recorded Plat \_\_\_\_\_

5. Private Claims \_\_\_\_\_

I, Steve Lampen, in a field survey on November 28, 1997, do hereby certify that under requirements of P.A. 74, Michigan P.A. of 1970, the corner points mentioned in lines 1 and 2 above were in conformance with regulations and rules therefore as required in the current manual of survey instructions of the United States Department of the Interior, Bureau of Land Management or by a decree of a Court of Law and/or that the corner points mentioned in lines 3, 4 and 5 above were in conformance with the rules of the Michigan Board of Land Surveyors or by a Decree of a Court of Law; established, re-established, monumented, re-monumented, recovered, found as expressed below:

NOTE: Not more than 4 corners, all in the same town and range, may be recorded on this certificate.

#### A. Description of original monument and accessories and/or subsequent restoration:

M-11 G.L.O. - Sibley, Britain - 1832

North on East side Section 36

40.00 set H.M.P.

70.30 to lake, set post

80.00 corner to Sections 25 and 36 in lake

North on East side Section 25

25.73 left Lack River Lake and set meander post

40.00 set 1/2 mile post

G.L.O. for Town 5 North, Range 15 West - Britain - 1832

West between Sections 30 and 31

40.00 set H.M.P.

71.12 Black River Lake and set meander post

82.89 West boundary 36 South of post and set corner in lake to Sections 30 and 31

Section between Sections 31 and 36 is shown on Plats: Ingleside Plat - 1923, Heneveld's Supervisor's Plat No. 16 - 1933, Oak Lawn Park - 1912

#### B. Description of corner evidence found and/or method applied in restoring or reestablishing corner:

M-11 Found no field evidence or Survey record that M-11 had ever been located since the original G.L.O. Survey. Re-established the East and West position of the section line between Sections 25 and 30 using the plats listed in Part A. Calculated the North and South location of M-11 by proportioning the G.L.O. measurement between M-10 and M-11

Set Ottawa County Remonumentation iron and cap at the G.L.O. meander post on the section line between Sections 25 and 30 as a reference monument.

Calculated position of M-11 and the section line between Sections 25 and 30 are accepted as a careful and faithful re-establishment of the position of the original corner and section line.

See sketch on back.

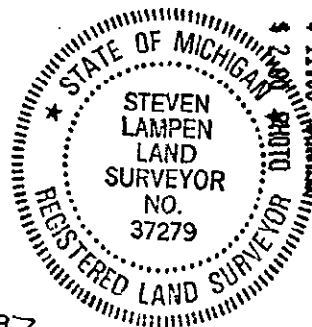
PA. 345 OTTAWA COUNTY

PEER APPROVED

#### C. Description of monument for corner and accessories established to perpetuate locating the position of the corner:

M-11 - Reference Monument - Ottawa County Remonumentation iron and cap on the section line between Sections 25 and 30 at the G.L.O. meander post position. Az. = Michigan State Plane grid direction

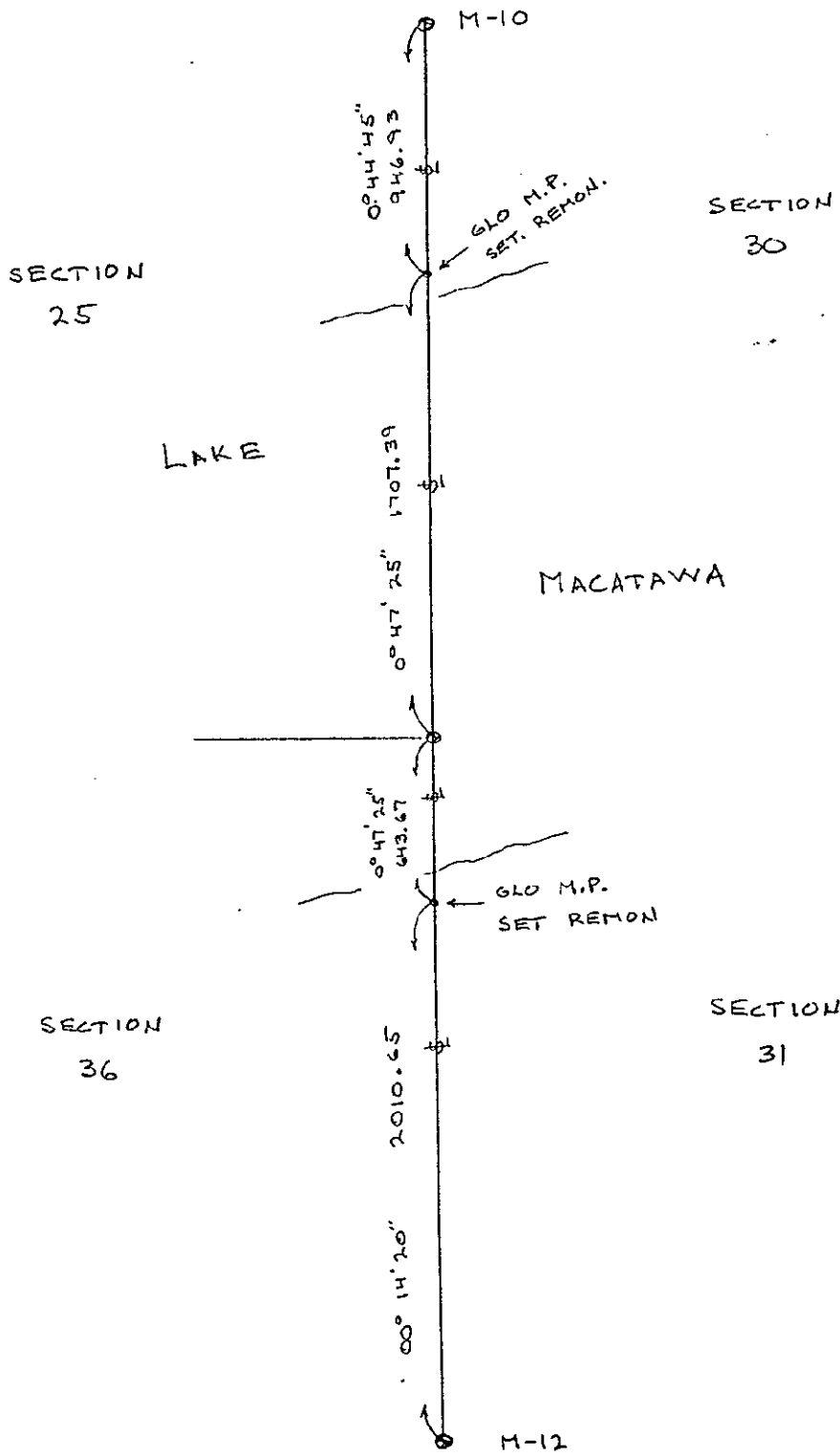
Remonumentation tag on Southwest side 10" Ash	321° 11'	19.35'
Remonumentation tag on West side 24" Oak	17° 13'	47.14'
Southeast corner concrete block building	265° 44'	20.14'
Southwest corner concrete wall	46° 03'	27.65'
North shore Lake Macatava	181°	29.00'±
M-11	180° 47' 25"	1707.39'
M-10	0° 44' 45"	946.93



Signed by Steven Lampen

Date DECEMBER 1, 1997

Surveyor's Michigan License No. 37279



SURVEY &  
REMONUMENTATION

FEB 27 1998

SECTION