

SURVEY &
REMONUMENTATION

FEB 27 1998

OTTAWA COUNTY REMONUMENTATION
LAND CORNER RECORDATION CERTIFICATE
Filing Requirement of Act 74, Mich. P.A. 1970

SECTION

For corners in

Ottawa
(County)

Located in: Corner Code #
Robinson Township

1. Public Land Survey T 7N R 15W A-5
T R SW corner
T R Sec. 7
T R
2. Property Controlling S T R
in Section S T R
3. Miscellaneous S T R
Property in Sec. S T R

RECORDED

97 DEC -8 AM 11:42

Ray Scheller
REGISTER OF DEEDS
OTTAWA COUNTY, MI

Register of Deeds Stamp & File Number

4. Lot No. _____, Recorded Plat _____
5. Private Claims _____

I, Carl P. Englert, in a field survey on 11/26, 19 97 do hereby state that under requirements of P.A. 74, Michigan P.A. of 1970, the corner points mentioned in lines 1 and 2 above were in conformance with regulations and rules therefore as required in the current manual of survey instructions of the United States Department of the Interior, Bureau of Land Management or by a decree of a Court of Law and/or that the corner points mentioned in lines 3, 4 and 5 above were in conformance with the rules of the Michigan Board of Land Surveyors or by a Decree of a Court of Law; established, re-established, monumented, recovered, found as expressed below:

NOTE: Not more than 2 corners, all in the same town and range, may be recorded on this certificate.

	A	B	C	D	E	F	G	H	I	J	K	L	M
1													
2		6		5		4		3		2		1	
3													
4		7		8		9		10		11		12	
5													
6		18		17		16		15		14		13	
7													
8		19		20		21		22		23		24	
9													
10		30		29		28		27		26		25	
11													
12		31		32		33		34		35		36	
13													

A. Description of original monument and accessories and/or subsequent restoration:

A-5 Section corner common to Sections 7 and 18
G.L.O. May 1832, Noah Brookfield
West Boundary 234 N. of Post & Set corner
Beech 28" N. 27° E. 12 links
Beech 16" S. 3° E. 30 links

LCRC Liber 1, Page 389
4/24/72 Found Iron Pipe
Gov. B.M. SW 46.6'
Support Pole SE 53.1'
Street Sign NE 55.1'
Power Pole NE 63.6'

See Other Side

B. Description of corner evidence found and/or method applied in restoring or reestablishing corner:

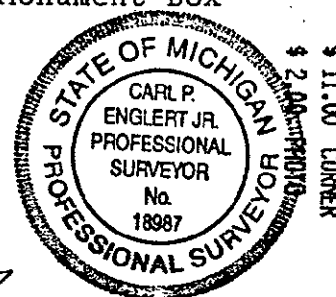
A-5 Section corner common to Sections 7 and 18
Found 4" Harrison Cast Iron Mon. in Mon. Box
Found corner to T7N, R16W South 15.13'

P.A. 345 OTTAWA COUNTY
PEER APPROVED 12-1-97

Accepted as a careful and faithful perpetuation of
the position of the original corner.

C. Description of monument for corner and accessories established to perpetuate locating the position of the corner:

A-5 Section corner common to Sections 7 and 18
Found 4" Harrison Cast Iron Monument (top broken off) in Monument Box
in centerline of 144th Ave. & Lincoln St. 8" deep
O.C. Remon. Tag & Nail in NE Side Guy Pole S61°E 61.12'
O.C. Remon. Tag & Nail in S Side P.P. N77°E 128.80'
O.C. Remon. Tag & Nail in NE Side P.P. N61°W 60.10'
O.C. Remon. Tag & Nail in SE Side 16" Oak S31°W 117.49'
T7N, R16W corner South 15.13'



Signed by

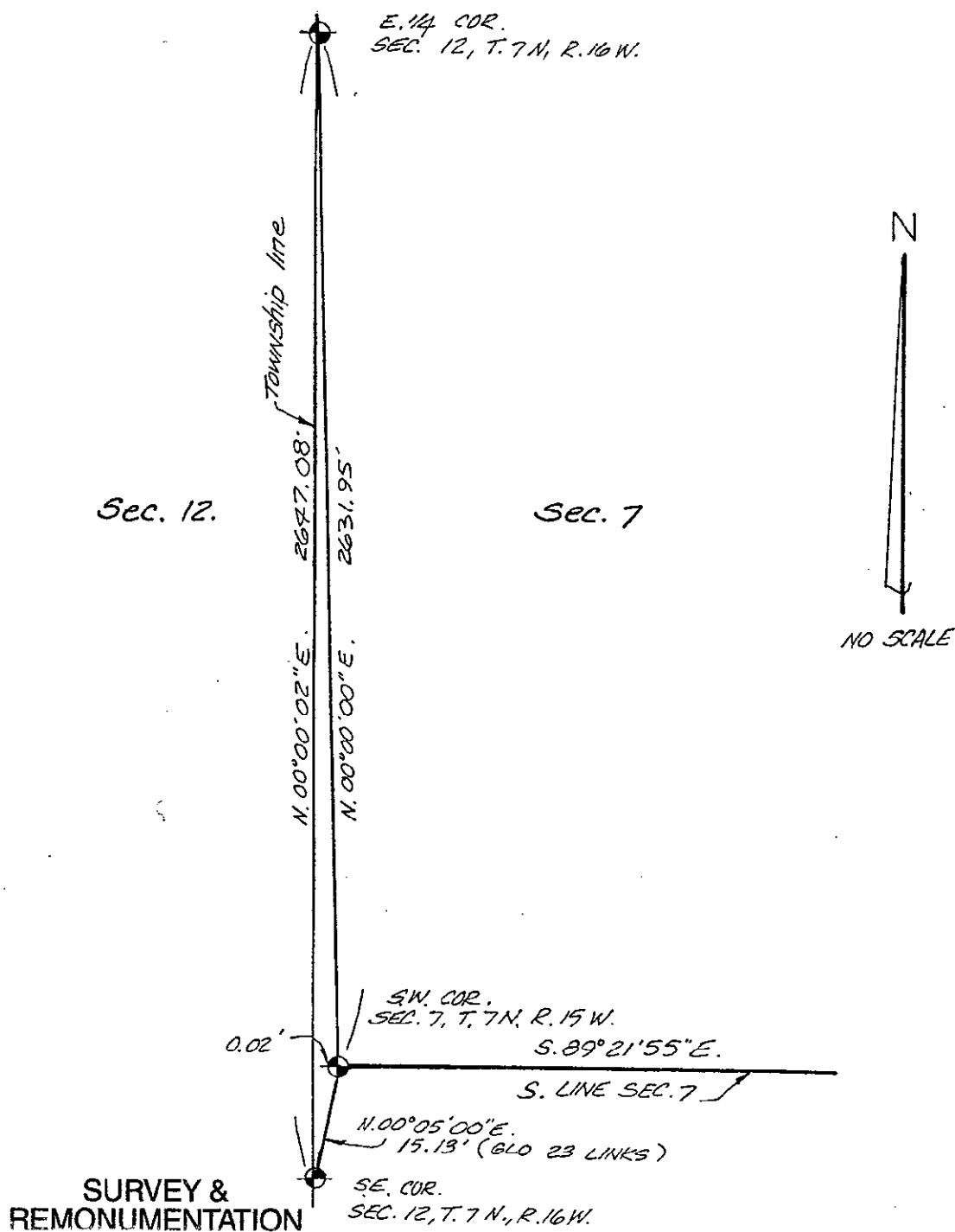
Carl P. Englert Jr.
18987

Date

12/1/1997

Surveyor's Michigan License No.

A-5
 L.C.R.C. LIBER 3, PAGE 380 6/29/79
 FOUND IRON PIPE SET COST IRON MONUMENT
 P.P. NE. 63.77'
 ST. SIGN NE. 55.15'
 GUY pole SE. 53.19'
 G.H. CORNER S. 15.19'



SURVEY &
 REMONUMENTATION

FEB 27 1998

SECTION