

SURVEY &
REMONUMENTATION

FEB 27 1998

OTTAWA COUNTY REMONUMENTATION
LAND CORNER RECORDATION CERTIFICATE
Filing Requirement of Act 74, Mich. P.A. 1970

SECTION

For corners in
Ottawa

(County)

Located In:

Corner Code #

1. Public Land Survey

T8N R16W
T R
T R
T R

J-4, 5
South 1/4 corner
Section 11
Reference monument

2. Property Controlling
in Section

S 11 T8N R16W
S T R

SEQUENTIAL
CORNER #2

3. Miscellaneous
Property in Sec.

S T R
S T R

4. Lot No. _____, Recorded Plat _____

5. Private Claims _____

RECORDED

97 DEC -8 AM 11:33

Harry Schell
REGISTER OF DEEDS
OTTAWA COUNTY, MI

Register of Deeds Stamp & File Number

I, Steven Lampen, in a field survey on November 19, 1997, do hereby certify that under requirements of P.A. 74, Michigan P.A. of 1970, the corner points mentioned in lines 1 and 2 above were in conformance with regulations and rules therefore as required in the current manual of survey instructions of the United States Department of the Interior, Bureau of Land Management or by a decree of a Court of Law and/or that the corner points mentioned in lines 3, 4 and 5 above were in conformance with the rules of the Michigan Board of Land Surveyors or by a Decree of a Court of Law, established, re-established, monumented, re-monumented, recovered, found as expressed below:

NOTE: Not more than 4 corners, all in the same town and range, may be recorded on this certificate.

A. Description of original monument and accessories and/or subsequent restoration:

J-5
G.L.O. - Brookfield - 1837
West corrected between Section 11 and 14
30.50 B. Ash 9 on East side bay
47.50 set post West side bay
66.21 B. Oak 14 on Eastern margin Bayou
80.00 section corner

J-5 and North and South 1/4 line and South line Section 11 is shown on Survey by Peck - 1897 Plat of Longview - 1912 North and South 1/4 line is shown on Linnview Plat - 1921

B. Description of corner evidence found and/or method applied in restoring or reestablishing corner:

J-5
J-5 was not set in original G.L.O. Survey. Peck's North and South position of J-5 appears to be set at 2640 feet South of J-4 in Survey of 1897.

Calculated position of J-5 by intersecting the extension of found monumentation along North and South 1/4 line of Plats of Longview and Linnview with found monumentation along the section line between Sections 11 and 14 per Plat of Longview and K-5.

Set Ottawa County Remonumentation iron and cap on North and South 1/4 line of Section 11 as a reference monument.

This corner not monumented by the original G.L.O. Survey. Calculated position of J-5 is accepted as the best position of the corner.

See sketch on back.

P.A. 345 OTTAWA COUNTY
PEER APPROVED *[Signature]*

C. Description of monument for corner and accessories established to perpetuate locating the position of the corner: -

J-5 Reference monument - Az. = Michigan State Plane grid direction.
Ottawa County Remonumentation iron and cap on the North and South 1/4 line of Section 11

Remonumentation tag in Southwest side power pole	157° 14'	49.59'
Southwest corner house foundation	299° 29'	75.10'
Southwest corner concrete block building	283° 44'	137.83'
Northwest corner concrete bridge pillar	130° 34'	88.98'
North shore Petty's Bayou	181° 33'	50.00'±
J-5	181° 32' 31"	524.36'
J-4	1° 32' 31"	2111.36'
Northeast corner Government Lot 3	1° 32' 31"	791.07'

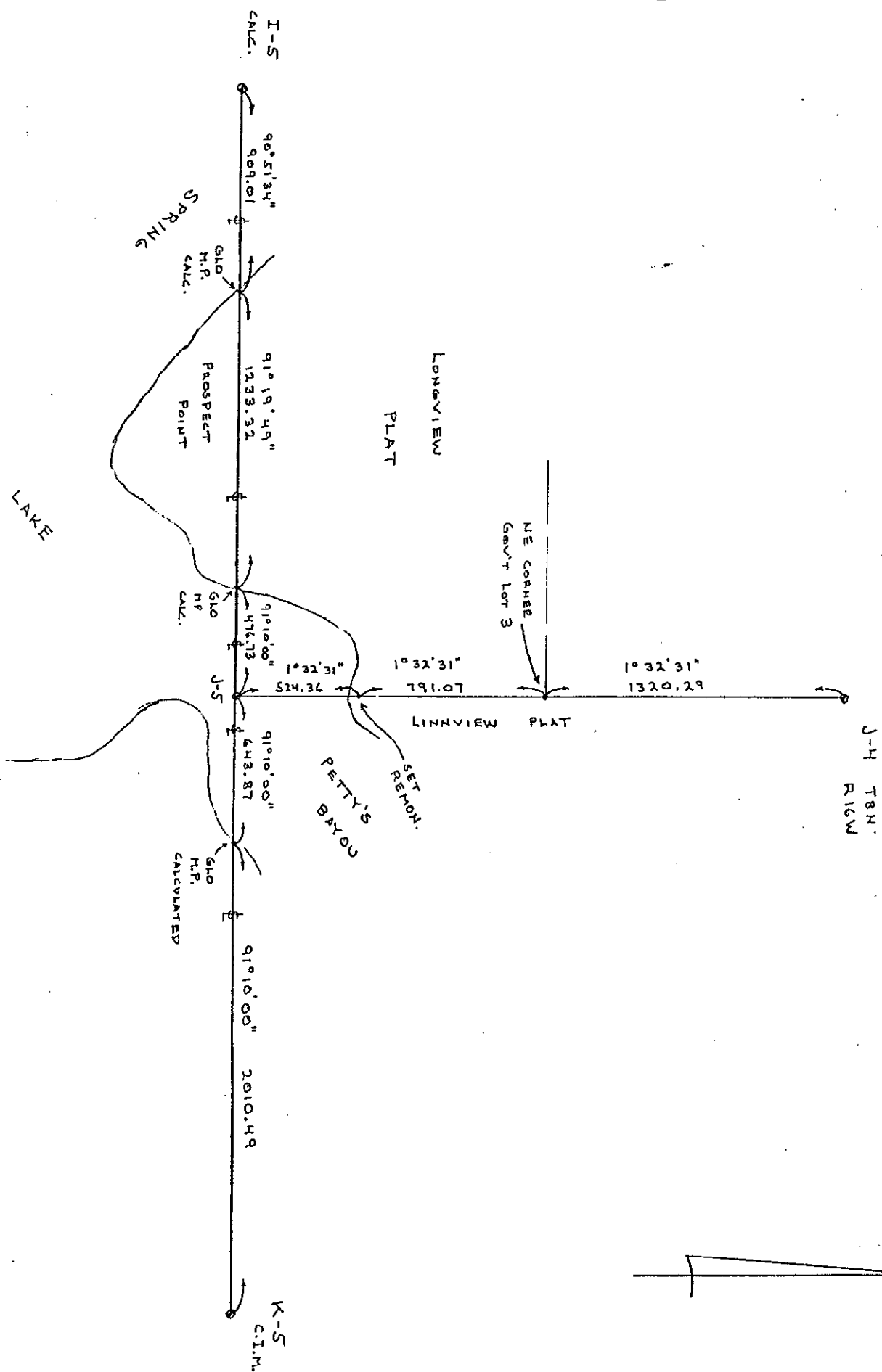


Signed by *Steven Lampen*

Date *DECEMBER 2, 1997*

Surveyor's Michigan License No. *37279*

FORM APPROVED BY MICHIGAN STATE BOARD OF LAND SURVEYORS, JAN. 28, 1971
REVISED MAY 14, 1976
REVISED JAN., 1993
ADAPTED FOR WORD PROCESSING MARCH, 1993



SURVEY &
REMONUMENTATION

FEB 27 1998

SECTION