

SURVEY & REMONUMENTATION

FEB 27 1998

OTTAWA COUNTY REMONUMENTATION LAND CORNER RECORDATION CERTIFICATE

Filing Requirement of Act 74, Mich. P.A. 1970

SECTION

For corners in
Ottawa

(County)

Located In:

Corner Code #

1. Public Land Survey

T8N R16W

E, F-7, E

T R

North 1/4 corner

T R

Section 21

T R

Reference monument

2. Property Controlling
in Section

S 16 T8N R16W

SEQUENTIAL

S 21 T8N R16W

CORNER # 7

3. Miscellaneous
Property in Sec.

S T R

S T R

4. Lot No. , Recorded Plat

5. Private Claims

RECORDED

97 DEC -8 AM 11:32

REGISTER OF DEEDS
OTTAWA COUNTY, MI

Register of Deeds Stamp & File Number

I, Steven Lampen, in a field survey on November 24, 1997, do hereby certify that under requirements of P.A. 74, Michigan P.A. of 1970, the corner points mentioned in lines 1 and 2 above were in conformance with regulations and rules therefore as required in the current manual of survey instructions of the United States Department of the Interior, Bureau of Land Management or by a decree of a Court of Law and/or that the corner points mentioned in lines 3, 4 and 5 above were in conformance with the rules of the Michigan Board of Land Surveyors or by a Decree of a Court of Law, established, re-established, monumented, re-monumented, recovered, found as expressed below:

NOTE: Not more than 4 corners, all in the same town and range, may be recorded on this certificate.

A. Description of original monument and accessories and/or subsequent restoration:

F-7

G.L.O. - Brookfield - 1837

West corrected between Sections 16 and 21

50.32 set post on margin of marshy island

80.32 section corner

Section line between Sections 16 and 21 is shown on Survey by Bowen - 1935, Survey of Harbor Island - 1936

B. Description of corner evidence found and/or method applied in restoring or reestablishing corner:

F-7

Found no monumentation of the section line from the Surveys listed in Part A. Found no field evidence or Survey record that the original G.L.O. meander post had ever been located since the original G.L.O. Survey. Calculated position of F-7 mid-way and on line between E-7 and G-7 and set an Ottawa County Remonumentation iron and cap on the section line between Sections 16 and 21 as a reference monument.

This position not monumented by original G.L.O. Survey. Calculated position is accepted as the best position of the corner.

See sketch on back.

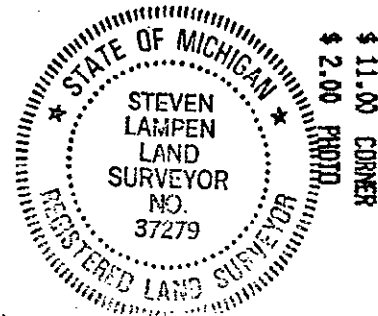
P.A. 345 OTTAWA COUNTY

PEER APPROVED 12-1-97

C. Description of monument for corner and accessories established to perpetuate locating the position of the corner:

F-7 Reference monument = Ottawa County Remonumentation iron and cap on the section line between Sections 16 and 21

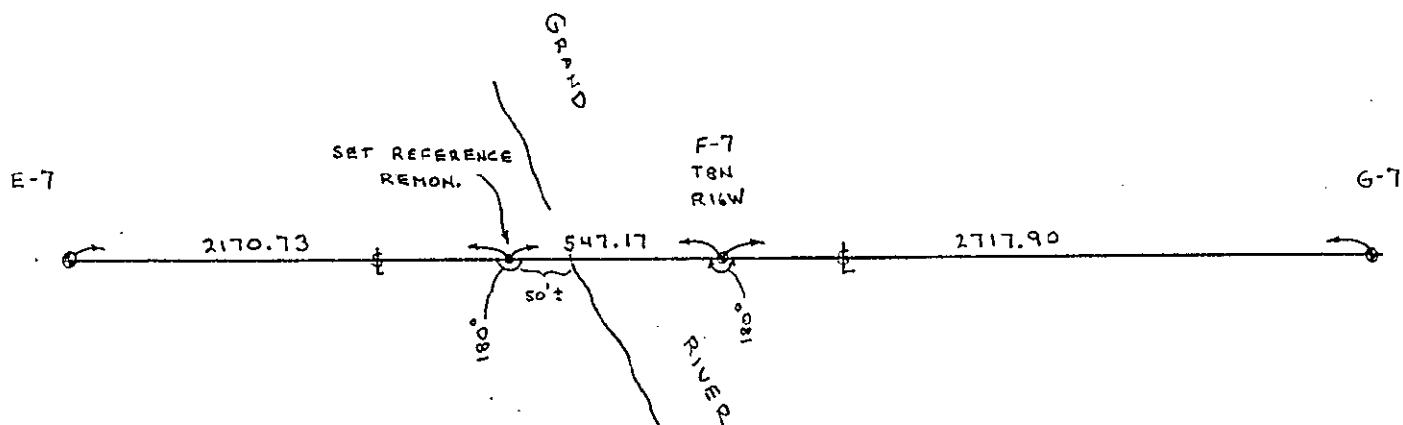
| | | |
|---|--------------|----------|
| Remonumentation tag in West side of 4" Ash | 340° | 6.20' |
| Remonumentation tag in South side of 6" Ash | 82° | 27.85' |
| Steel fence post | 262° | 106.80' |
| Southwesterly shore Grand River | 90° | 50.00'± |
| E-7 | 268° 17' 53" | 2170.73' |
| F-7 | 88° 17' 53" | 547.17' |
| G-7 | 88° 17' 53" | 3265.07' |



Signed by Steven Lampen

Date DECEMBER 1, 1997

Surveyor's Michigan License No. 37279



SURVEY & REMONUMENTATION

FEB 27 1998

SECTION