

# SURVEY & REMONUMENTATION

FEB 27 1998

## OTTAWA COUNTY REMONUMENTATION LAND CORNER RECORDATION CERTIFICATE Filing Requirement of Act 74, Mich. P.A. 1970

### SECTION

For corners in

Ottawa

(County)

Located In:

Corner Code #

1. Public Land Survey

T8N R16W

D, E-7

T R

North 1/4 corner

T R

Section 20

T R

Reference Monument

2. Property Controlling  
in Section

S17 T8N R16W

SEQUENTIAL

S20 T8N R16W

CORNER #8

3. Miscellaneous  
Property in Sec.

S T R

S T R

4. Lot No. Recorded Plat

5. Private Claims

RECORDED

97 DEC -8 AM 11:32

*Ray Robinson*  
REGISTER OF DEEDS  
OTTAWA COUNTY, MI

Register of Deeds Stamp & File Number

I, Steve Lampen, in a field survey on November 24, 1997, do hereby certify that under requirements of P.A. 74, Michigan P.A. of 1970, the corner points mentioned in lines 1 and 2 above were in conformance with regulations and rules therefore as required in the current manual of survey instructions of the United States Department of the Interior, Bureau of Land Management or by a decree of a Court of Law and/or that the corner points mentioned in lines 3, 4 and 5 above were in conformance with the rules of the Michigan Board of Land Surveyors or by a Decree of a Court of Law; established, re-established, monumented, re-monumented, recovered, found as expressed below:

NOTE: Not more than 4 corners, all in the same town and range, may be recorded on this certificate.

A. Description of original monument and accessories and/or subsequent restoration:

D-7

G.L.O. - Brookfield - 1837

West between Sections 17 and 20

20.00 in river to marshy island. Set post

33.00 over to West side of island. Post in marsh

43.50 right bank Grand River set post

80.00 corner Sections 17, 18, 19 and 20

Black Oak 20 corner

Section line between Sections 17 and 20 is shown on Plat of Storrs and Co. - 1869

Survey by Carl Bowen - 1935

Survey of Harbor Island - 1936

Triangulation Survey - 1959

Section line was surveyed by David Greer No. 16042 in late 1960's.

B. Description of corner evidence found and/or method applied in restoring or reestablishing corner:

D-7

Found no field evidence or Survey record that the original G.L.O. meander posts had ever been located.

Found no monumentation from the Plat of Storrs and Co. or surveys of 1935, 1936 and 1959. Found monumentation by David Greer on West side of Grand River on line between C-7 and E-7.

Calculated the position of D-7 mid-way and on line between C-7 and E-7.

Set Ottawa County Remonumentation iron and cap as a reference monument on the section line between Sections 17 and 20 on the West and East sides of the Grand River. See sketch on back.

This corner not monumented by the original G.L.O. Survey. Calculated position of D-7 is accepted as the best position of the corner.

P.A. 345 OTTAWA COUNTY

PEER APPROVED 12-1-97

C. Description of monument for corner and accessories established to perpetuate locating the position of the corner:

D-7 Reference monument

Ottawa County Remonumentation iron and cap on the section line between Sections 17 and 20

Easterly bank of the Grand River

272°

20.00'±

Remonumentation tag in West side 6" Ash

23°

29.43'

Remonumentation tag in West side 6" Ash

191°

30.70'

Remonumentation tag in South side 4" Ash

91°

53.85'

D-7

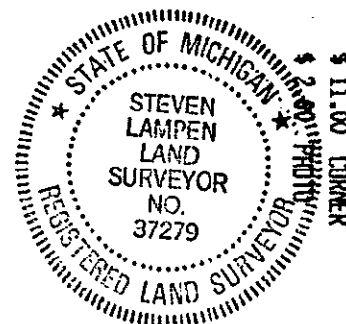
271° 55' 24"

425.36'

E-7

91° 55' 24"

2168.88'

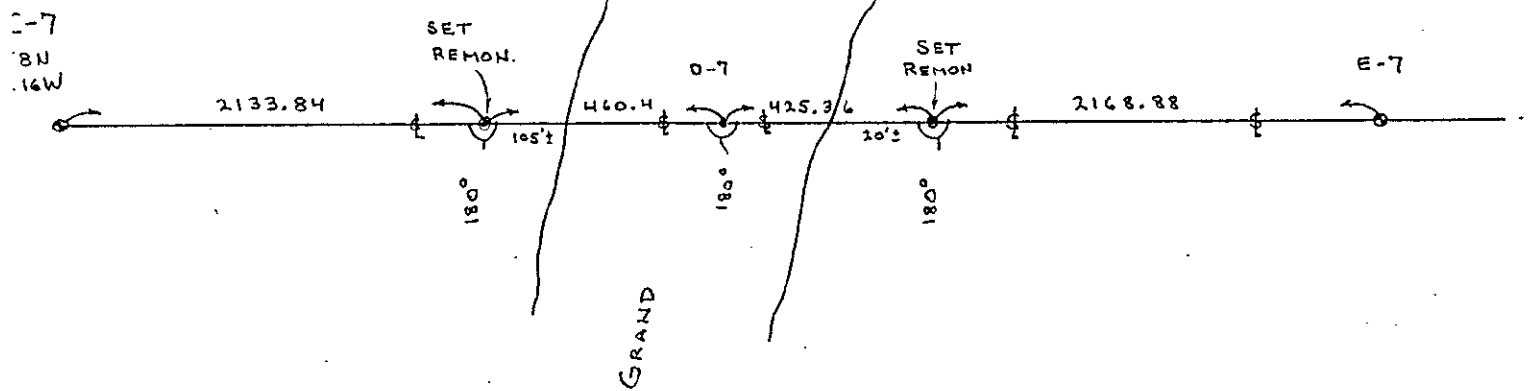


Signed by *Steven Lampen*

Date DECEMBER 1, 1997

Surveyor's Michigan License No. 37279

2



**SURVEY &  
REMONUMENTATION**

**FEB 27 1998**

**SECTION**