

LAND CORNER RECORDATION CERTIFICATE  
Filing Requirement of Act 74, Mich. P.A. 1970

For corners in

Ontonagon  
(County)

Located In:

Corner Code =#

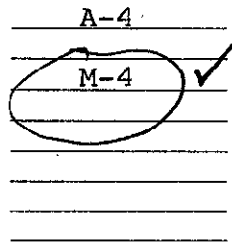
SURVEY &  
REMONUMENTATION

APR 07 1998

SECTION

Register of Deeds Stamp & File Number

1. Public Land Survey T 49N R 42W  
T \_\_\_\_\_ R \_\_\_\_\_  
T 49N R 43W  
T \_\_\_\_\_ R \_\_\_\_\_  
2. Property Controlling S \_\_\_\_\_ T \_\_\_\_\_ R \_\_\_\_\_  
in Section S \_\_\_\_\_ T \_\_\_\_\_ R \_\_\_\_\_  
3. Miscellaneous S \_\_\_\_\_ T \_\_\_\_\_ R \_\_\_\_\_  
Property in Sec. S \_\_\_\_\_ T \_\_\_\_\_ R \_\_\_\_\_



4. Lot No. \_\_\_\_\_, Recorded Plat \_\_\_\_\_  
5. Private Claims \_\_\_\_\_

$\frac{1}{4}$  Corner 7 & 12; T.49 N., R.42-43 W.

Richard L. Drahn, in a field survey on November 29, 19 97,  
do hereby certify that under requirements of P.A. 74, Michigan P.A. of 1970, the corner points mentioned  
in lines 1 and 2 above were in conformance with regulations and rules therefore as required in the  
current manual of survey instructions of the United States Department of the Interior, Bureau of Land  
Management or by a decree of a Court of Law and/or that the corner points mentioned in lines 3, 4 and 5  
above were in conformance with the rules of the Michigan Board of Land Surveyors or by a Decree of a  
Court of Law; established, re-established, monumented, re-monumented, recovered, found as  
expressed below:

NOTE: Not more than 4 corners, all in the same town and range, may be recorded  
on this certificate.

A. Description of original monument and accessories and/or subsequent restoration:

Corner established by John Burt on August 18, 1847. Original B.T.s --- Sugar  
16" S.09 E. 53 links (34.98') ---Lynn 16" N.35 W. 23 links (15.18') ---

Corner restored on 2/7/78 by Richard L. Drahn (21564) from the decayed remains  
of the two original B.T.s and recovered line trees north and south. He set a  
2" X 5' iron pipe with a stamped 3" brass cap and the following:

12" Cedar N.62 W. 30.7'  
9" Sugar Maple N.40 E. 20.9'  
9" Cedar S.67 E. 35.1'  
7' Steel sign post N.72 W. 1.8'

B. Description of corner evidence found and/or method applied in restoring or reestablishing corner:

Corner recorded in Ontonagon County in Liber 1, Page 141 on 4/25/79.

Research form on file with Ontonagon County records.

Recovered the corner as described and the bearing trees as follows:

14" Cedar N.62 W. 30.41'  
9" Sugar Maple N.40 E. 20.57'  
9" Cedar S.67 E. 35.17! (broken and down)  
7' Steel sign post N.71 W. 1.84'

Only a shallow depression and a stump hole remain from the GLO B.T.s.

C. Description of monument for corner and accessories established to perpetuate locating the position of the corner:

From the above described monument I referenced the following:

7" Sugar Maple S.40 E. 6.53'

PEER GROUP APPROVED  
*Earl W. Apple*  
COUNTY REGISTER

12-01-97



Signed by Richard L. Drahn

Date November 30, 1997

Surveyor's Michigan License No. 21564

USFS G-1