

# LAND CORNER RECORDATION CERTIFICATE

Filing Requirement of Act 74, Mich. PA 1970

For Corners In:

Presque Isle

(County)

Located In

Corner Code #

1. Public Land Survey	T	33N	R	2E	J-7
	T		R		
2. Property Controlling in Section	S	23	T	33N	R
	S		T		R
3. Miscellaneous Property in Section	S		T		R
	S		T		R

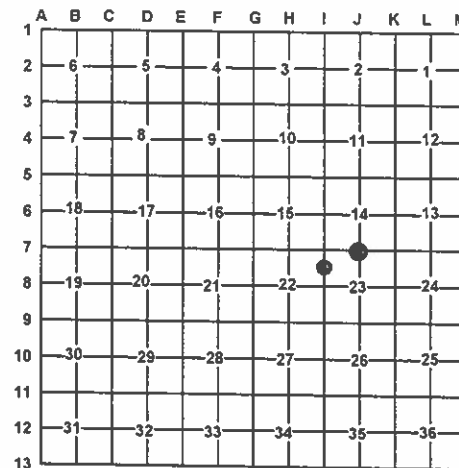
Register of Deeds Stamp & File Number

4. Lot No: \_\_\_\_\_ Recorded Plat: \_\_\_\_\_

5. Private Claims: \_\_\_\_\_

I, Carl T. Kiiskila, in a field survey on June 11, 2008 do hereby state that under requirements of PA 74, Michigan PA of 1970, the corner points mentioned in lines 1 and 2 above were in conformance with regulations and rules therefore as required in the current manual of survey instructions of the United States Department of the Interior, Bureau of Land Management or by a decree of a Court of Law and/or that the corner points mentioned in lines 3, 4 and 5 above were in conformance with the rules of the Michigan Board of Land Surveyors or by a Decree of a Court of Law; established, re-established, monumented, recovered, found as expressed below:

**NOTE: Not more than 2 corners, all in the same town and range, may be recorded on this certificate.**



A. Description of original monument and accessories and/or subsequent restoration:

J-7 G.L.O. 1851 Geo. H. Cannon set quarter post

Wits: W. Pine 6" N25°W 15 links

Y. Pine 6" S35°E 8 links

3- Marcus Schaaf RLS #3104 index shows he set a monument for the corner while working in the area CIRCA 1940.

Marcus Schaaf RLS #3104 index shows he set a monument for the corner while working in the area CIRCA 1940.

B. Description of corner evidence found and/or method applies in restoring or re-establishing corner:

J-7 Found 2 3/8" pipe added 1/2" x 18" rod with PS cap #33981

3- Found a 1 7/8" pipe added 1/2" x 18" rod with PS cap #33981

C. Description of monument for corner and accessories established to perpetuate locating the position of the corner:

J-7 Placed 1/2" x 18" rod with PS cap #33981 in found pipe

Wit: Set nail and tag in Northwest side of a 4" Oak S40°W 14.45'

Set nail and tag in Northeast side of a 8" Oak S16°E 20.00'

Set nail and tag in South side of a 10" Oak N76°E 21.00'

Set nail and tag in East side of a 4" Maple N22°W 24.00'

Set Carsonite post South 1'±

3- Placed 1/2" x 18" rod with PS cap #33981 in found pipe

Wit: Set nail and tag in Southeast side of a 3" Maple S76°W 19.36'

Set nail and tag in Northeast side of a 4" Oak N42°W 21.38'

Set nail and tag in Southwest side of a 22" Oak S30°E 47.45'

Set nail and tag in Northwest side of a 3" Maple N31°E 19.46'

Set Carsonite Post North 1'±

Signed by:

Carl T. Kiiskila

Date:

9-15-08

Surveyor's Michigan License No.:

33981

