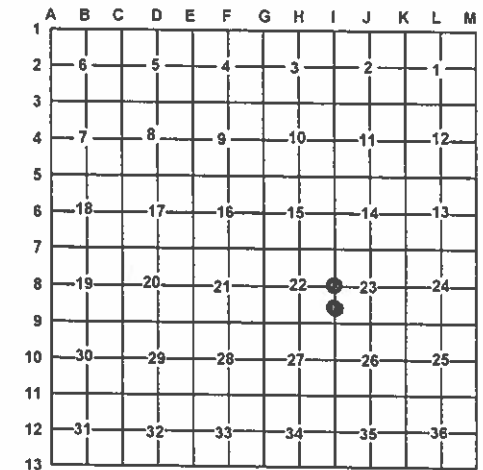


LAND CORNER RECORDATION CERTIFICATE
Filing Requirement of Act 74, Mich. PA 1970

For Corners In: Presque Isle (County) Located In Corner Code #
1. Public Land Survey T 33N R 2E I-8
2. Property Controlling in Section S 23 T 33N R 2E 10
3. Miscellaneous Property in Section S T R
4. Lot No: Recorded Plat:
5. Private Claims:

Register of Deeds Stamp & File Number



I, Carl T. Kiiskila, in a field survey on May 21, 2008 do hereby state that under requirements of PA 74, Michigan PA of 1970, the corner points mentioned in lines 1 and 2 above were in conformance with regulations and rules therefore as required in the current manual of survey instructions of the United States Department of the Interior, Bureau of Land Management or by a decree of a Court of Law and/or that the corner points mentioned in lines 3, 4 and 5 above were in conformance with the rules of the Michigan Board of Land Surveyors or by a Decree of a Court of Law; established, re-established, monumented, recovered, found as expressed below:

NOTE: Not more than 2 corners, all in the same town and range, may be recorded on this certificate.

A. Description of original monument and accessories and/or subsequent restoration:
I-8 G.L.O. 1851 Geo. H. Cannon set quarter section post
Wits: Spruce Pine 4" S50°E 32 links
Spruce Pine 10" N50°W 30 links
10- Marcus Schaaf R.L.S. #3104 index shows he set a monument for the corner while working in the area CIRCA 1940.
Marcus Schaaf R.L.S. #3104 index shows he set a monument for the corner while working in the area CIRCA 1940
Liber 314, Page 13, 1995 Norman Quaine P.S.#33984 set a 1/2" rod with PS cap #33984 by single proportion.
Wits: S86°W 32.11' 6" J. Pine
N28°W 34.36' 6" J. Pine
N86°E 15.37' 6" J. Pine
S54°E 14.63' 6" J. Pine

B. Description of corner evidence found and/or method applies in restoring or re-establishing corner:
I-8 Found 1/2" rod with PS cap #33984
10- Found a 2" pipe with 8" x 8" concrete base 2.8' out of position for the proper position for the subdivision of a section. Moved the found 2" pipe 2.8' North to fit the standard BLM instructions for the subdivision of a section.

C. Description of monument for corner and accessories established to perpetuate locating the position of the corner:
I-8 Set 1"X32" pipe with standard DNR cap
Wit: Set nail and tag in East side of a 2" Jack Pine N25°E 8.87'
Set nail and tag in West side of a 4" Red Pine S26°E 119.17'
Set nail and tag in West side of a 4" Red Pine S11°E 109.07'
Set nail and tag in West side of a 3" Oak S15°W 110.06'
10-Set a 1/2" x 18" rod with PS cap#33981 in the relocated 2" pipe
Wit: Set nail and tag in North side of a 8" Oak S35°W 35.28'
Set nail and tag in North side of a 8" Oak N64°W 29.80'
Set nail and tag in East side of a 11" Jack Pine N24°E 12.32'
Set nail and tag in South side of a 14" Jack Pine East 16.19'

Signed by: Carl T Kiiskila
Surveyor's Michigan License No.: 33981

Date: 9-15-08

