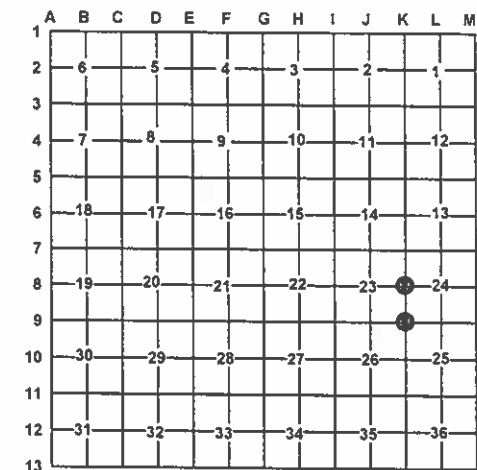


LAND CORNER RECORDATION CERTIFICATE
Filing Requirement of Act 74, Mich. PA 1970

For Corners In: Presque Isle (County)
Located In
Corner Code #
1. Public Land Survey
2. Property Controlling in Section
3. Miscellaneous Property in Section
4. Lot No:
5. Private Claims:

Register of Deeds Stamp & File Number



I, Carl T. Kiiskila, in a field survey on May 29, 2008 do hereby state that under requirements of PA 74, Michigan PA of 1970, the corner points mentioned in lines 1 and 2 above were in conformance with regulations and rules therefore as required in the current manual of survey instructions of the United States Department of the Interior, Bureau of Land Management or by a decree of a Court of Law and/or that the corner points mentioned in lines 3, 4 and 5 above were in conformance with the rules of the Michigan Board of Land Surveyors or by a Decree of a Court of Law; established, re-established, monumented, recovered, found as expressed below:

NOTE: Not more than 2 corners, all in the same town and range, may be recorded on this certificate.

A. Description of original monument and accessories and/or subsequent restoration:

K-9 G.L.O. 1851 Geo. H. Cannon set post for corner sections 23,24,25 & 26
Wits: Y. Pine 15" N18°E 53 links
Y. Pine 10" S40°W 23 links

K-8 G.L.O. 1851 Geo. H. Cannon set quarter post
Wits: Spruce Pine 10" N86°E 27 links
Spruce Pine 4" West 11 links

Marcus Schaaf R.L.S. #3104 index shows he set a monument for the corner while working in the area CIRCA 1940.

Marcus Schaaf R.L.S. #3104 index shows he set a monument for the corner while working in the area CIRCA 1940.

B. Description of corner evidence found and/or method applies in restoring or re-establishing corner:

K-9 Found 2 1/2" pipe added 1/2" x 18" rod with PS cap #33981

K-8 Found 2 1/2" pipe added 1/2" x 18" rod with PS cap #33981

C. Description of monument for corner and accessories established to perpetuate locating the position of the corner:

K-9 Set 1/2" X 18" iron rod with P.S. Cap #33981 in found 2 1/2" pipe
Wit: Set nail and tag in NE side of a 8" Red Pine S20°E 53.28'
Set nail and tag in SE side of a 13" Red Pine N33°E 38.80'
Set nail and tag in NE side of a 11" Red Pine N30°W 45.25'
Set nail and tag in NW side of a 12" Red Pine S45°W 53.92'

K-8 Set 1/2" X 18" iron rod with P.S. Cap #33981 in found 2 1/2" pipe
Wit: Set nail and tag in SE side of a 6" Jack Pine S56°W 9.90'
Set nail and tag in NE side of a 7" Jack Pine N28°W 14.18'
Set nail and tag in NW side of a 7" Jack Pine N41°E 46.83'
Set nail and tag in NE side of a 7" Jack Pine S25°E 39.17'

Signed by: Carl T Kiiskila
Surveyor's Michigan License No.: 33981

Date: 9-15-08

